

1 **RESOLUTION NO. 20-16**

2 **RESOLUTION OF THE CITY COUNCIL OF THE CITY OF CHICO AMENDING**
3 **STANDARD PLANS ADOPTED BY CHAPTER 18R.12 OF THE CHICO MUNICIPAL**
4 **CODE, ENTITLED "IMPROVEMENT STANDARDS"**

5 BE IT RESOLVED by the City Council of the City of Chico that Chapter 18R, entitled
6 "Improvement Standards" of the Chico Municipal Code be amended as follows:

7 Section 1. That Section 18R.12.020, entitled "Standard Plans" is amended as follows:

8 **18R.12.020 Standard plans.**

9 The following plans, copies of which are incorporated into this section, are hereby
10 adopted as the Standard Plans of the City of Chico:

<u>Plan No.</u>	<u>Title</u>
12 S-1	P.C.C. Sidewalk Details
13 S-2	P.C.C. Curb and Gutter
14 S-2A	Curb, Gutter & Sidewalk Installation at Trees
15 S-3	Existing Curb and/or Gutter Replacement Details
16 S-5	Residential Driveway Approach
17 S-5A	Commercial Driveway Approach
18 S-5B	Curb, Gutter & Driveway Details
19 S-5C	Curbed Driveway Entrance
20 S-6	Storm Drain Headwall
21 S-7	36" Drop Inlet (Caltrans "G-O") & Grate Detail (Sht. 1 & 2)
22 S-7A	Flat Grate Inlet (Caltrans "G-I")
23 S-10	Storm Drain and Sanitary Sewer Manhole
24 S-11	Drop Manhole
25 S-12	Approved Methods of Laying Pipe
26 S-12A	Pipe Crossing Cradle
27 S-12M	Modified Concrete Cradle
28 S-13	Typical Method for Setting Appurtenances

1	S-14	Bolt Down Manhole Frame & Cover Details
2	S-14A	(Repealed)
3	S-15	Flushing Hole - Cast Iron Frame and Cover
4	S-16	Street Name Sign Details
5	S-17	Typical Details of Pavement Replacement
6	S-19	Alley Pavement
7	S-20	City Monuments, Construction & Location
8	S-21	Street Barricades
9	S-26	Flat Grate Inlet
10	S-27	P.C.C. Handicapped Ramp
11	S-27A	P.C.C. Handicapped Ramp
12	S-28	Bus Turnout
13	S-35	Bicycle Barrier Post

14 Section 2. Standard Plan No. S-1, referred to in Section 18R.12.020, is amended to
15 read as set forth on the attached Exhibit A.

16 Section 3. Standard Plan No. S-2, referred to in Section 18R.12.020, is amended to
17 read as set forth on the attached Exhibit B.

18 Section 4. Standard Plan No. S-2A, referred to in Section 18R.12.020, is amended to
19 read as set forth on the attached Exhibit C.

20 Section 5. Standard Plan No. S-3, referred to in Section 18R.12.020, is amended to
21 read as set forth on the attached Exhibit D.

22 Section 6. Standard Plan No. S-5, referred to in Section 18R.12.020, is amended to
23 read as set forth on the attached Exhibit E.

24 Section 7. Standard Plan No. S-5A, referred to in Section 18R.12.020, is amended to
25 read as set forth on the attached Exhibit F.

26 Section 8. Standard Plan No. S-5B, referred to in Section 18R.12.020, is amended to
27 read as set forth on the attached Exhibit G.

28 Section 9. Standard Plan No. S-5C, referred to in Section 18R.12.020, is amended to

1 read as set forth on the attached Exhibit H.

2 Section 10. Standard Plan No. S-6, referred to in Section 18R.12.020, is amended to
3 read as set forth on the attached Exhibit I.

4 Section 11. Standard Plan No. S-7, referred to in Section 18R.12.020, is amended to
5 read as set forth on the attached Exhibit J.

6 Section 12. Standard Plan No. S-7A, referred to in Section 18R.12.020, is amended to
7 read as set forth on the attached Exhibit K.

8 Section 13. Standard Plan No. S-10, referred to in Section 18R.12.020, is amended to
9 read as set forth on the attached Exhibit L.

10 Section 14. Standard Plan No. S-11, referred to in Section 18R.12.020, is amended to
11 read as set forth on the attached Exhibit M.

12 Section 15. Standard Plan No. S-12, referred to in Section 18R.12.020, is amended to
13 read as set forth on the attached Exhibit N.

14 Section 16. Standard Plan No. S-12A, referred to in Section 18R.12.020, is amended
15 to read as set forth on the attached Exhibit O.

16 Section 17. Standard Plan No. S-12M, referred to in Section 18R.12.020, is amended
17 to read as set forth on the attached Exhibit P.

18 Section 18. Standard Plan No. S-13, referred to in Section 18R.12.020, is amended to
19 read as set forth on the attached Exhibit Q.

20 Section 19. Standard Plan No. S-14, referred to in Section 18R.12.020, is amended to
21 read as set forth on the attached Exhibit R.

22 Section 20. Standard Plan No. S-14A-Bolt Down Manhole Frame & Cover Details, is
23 hereby repealed.

24 Section 21. Standard Plan No. S-15, referred to in Section 18R.12.020, is amended to
25 read as set forth on the attached Exhibit S.

26 Section 22. Standard Plan No. S-16, referred to in Section 18R.12.020, is amended to
27 read as set forth on the attached Exhibit T.

28 Section 23. Standard Plan No. S-17, referred to in Section 18R.12.020, is amended to

1 read as set forth on the attached Exhibit U.

2 Section 24. Standard Plan No. S-19, referred to in Section 18R.12.020, is amended to
3 read as set forth on the attached Exhibit V.

4 Section 25. Standard Plan No. S-20, referred to in Section 18R.12.020, is amended to
5 read as set forth on the attached Exhibit W.

6 Section 26. Standard Plan No. S-21, referred to in Section 18R.12.020, is amended to
7 read as set forth on the attached Exhibit X.

8 Section 27. Standard Plan No. S-26, referred to in Section 18R.12.020, is amended to
9 read as set forth on the attached Exhibit Y.

10 Section 28. Standard Plan No. S-27, referred to in Section 18R.12.020, is amended to
11 read as set forth on the attached Exhibit Z.

12 Section 29. Standard Plan No. S-27A, referred to in Section 18R.12.020, is amended
13 to read as set forth on the attached Exhibit AA.

14 Section 30. Standard Plan No. S-28, referred to in Section 18R.12.020, is amended to
15 read as set forth on the attached Exhibit BB.

16 Section 31. Standard Plan No. S-35, referred to in Section 18R.12.020, is amended to
17 read as set forth on the attached Exhibit CC.

18 //

19 //

20 //

21 //

22 //

23 //

24 //

25 //

26 //

27 //

28 //

1 THE FOREGOING RESOLUTION WAS ADOPTED by the Council of the City of
2 Chico at its meeting held on _____ February 2, 2016 _____, by the following vote:

3 AYES: Coolidge, Fillmer, Ritter, Schwab, Stone, Morgan, Sorensen

4 NOES: None

5 ABSENT: None


6 ABSTAIN: None

7 DISQUALIFIED: None

8
9 ATTEST:

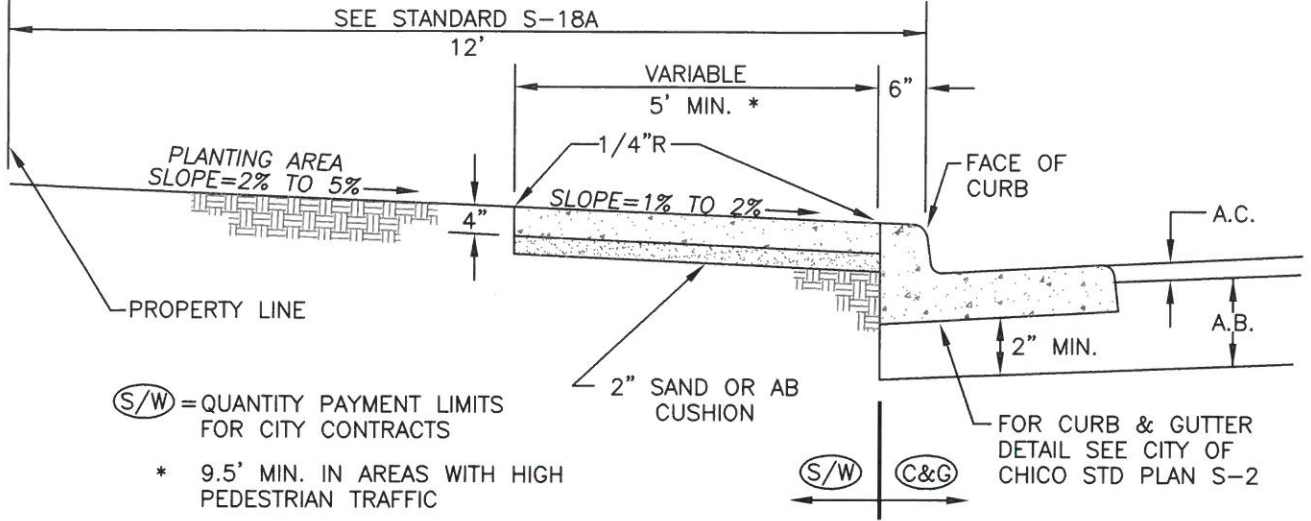
10 
11 Deborah R. Presson, City Clerk

APPROVED AS TO FORM:


12 Vincent C. Ewing, City Attorney*

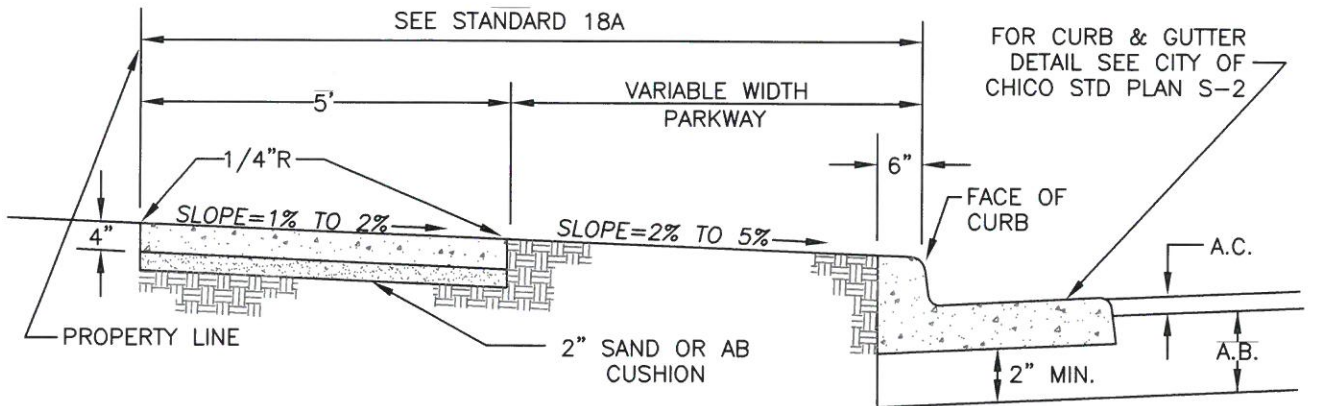
13 *Approved pursuant to The Charter of
14 the City of Chico § 906(E)
15
16
17
18
19
20
21
22
23
24
25
26
27
28

*ALL SIDEWALKS MUST COMPLY WITH CURRENT FEDERAL ADA REQUIREMENTS



CONTIGUOUS CURB, GUTTER & SIDEWALK

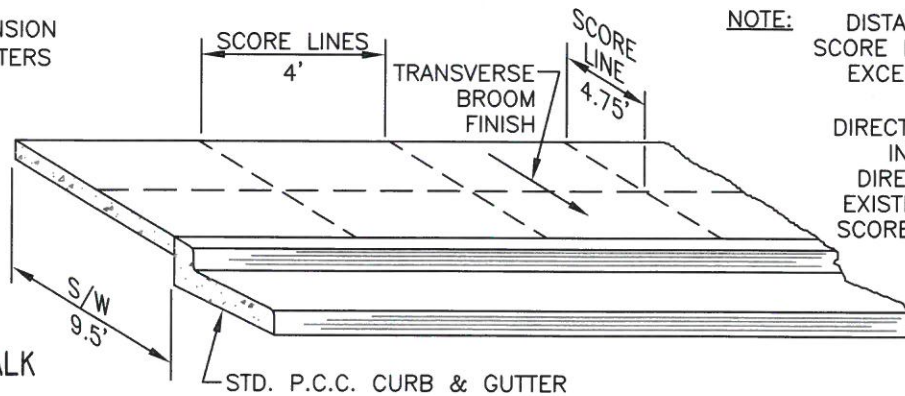
NOTE: IF AUTHORIZED, THIS SIDEWALK CONFIGURATION MAY BE USED IN EXISTING DEVELOPED AREAS TO MATCH AN ESTABLISHED SIDEWALK CONFIGURATION.



SEPARATED CURB, GUTTER & SIDEWALK

NOTE: THIS SIDEWALK CONFIGURATION SHALL BE USED IN CONJUNCTION WITH ALL NEW DEVELOPMENT AND/OR NEW CONSTRUCTION.

NOTE: INSTALL 1/4" EXPANSION JOINTS ON 48' CENTERS



NOTE: DISTANCE BETWEEN SCORE LINES NOT TO EXCEED 4 FEET IN LONGITUDINAL DIRECTION OR 4.75' IN TRANSVERSE DIRECTION. MATCH EXISTING ADJACENT SCORE PATTERN AS DIRECTED BY ENGINEER.

TYPICAL SIDEWALK SCORE LINES

REVISION	BY	DATE	APP. BY	COUNCIL

CITY OF CHICO

STANDARD PLAN

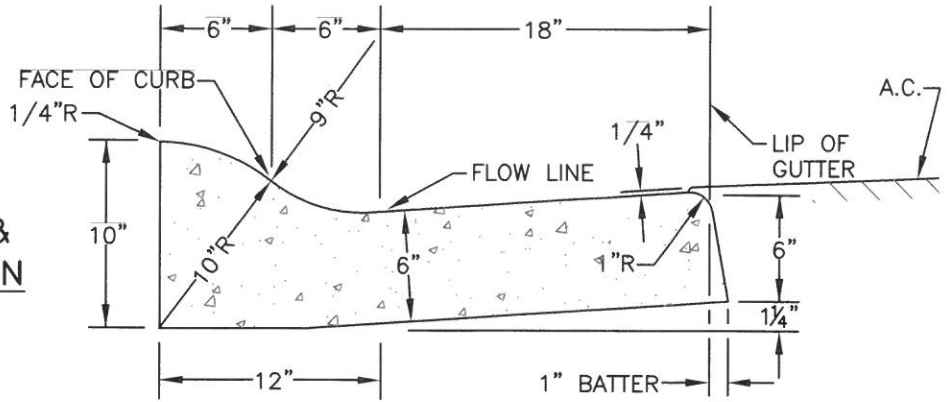
DRAWN BY: GL DATE: 02/2016
 CHECKED BY: BO SCALE: NONE
 APPROVED: [Signature]
 PUBLIC WORKS DIRECTOR-ENGINEERING

P.C.C. SIDEWALK DETAILS

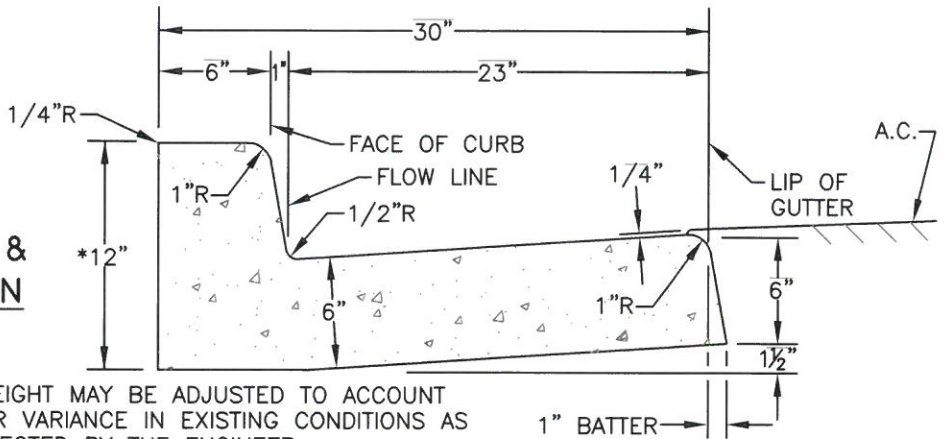
NO. **S-1**

SHEET 1 OF 1

ROLLED CURB & GUTTER SECTION

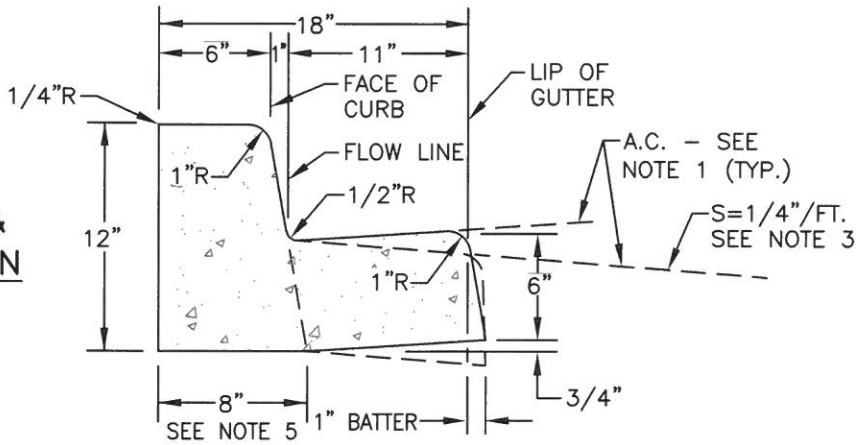


VERTICAL CURB & GUTTER SECTION



*HEIGHT MAY BE ADJUSTED TO ACCOUNT FOR VARIANCE IN EXISTING CONDITIONS AS DIRECTED BY THE ENGINEER

MEDIAN CURB & GUTTER SECTION



NOTES:

1. A.C. PAVING ADJACENT TO ALL GUTTERS SHALL BE 1/4" ABOVE THE LIP OF GUTTER.
2. INSTALL 1/4" WIDE EXPANSION JOINTS AT 48' MAX. INTERVALS AND 1/8" SCORED CONTROL JOINTS AT 12' MAX. INTERVALS ON ALL CURBS AND GUTTERS.
3. THE DIRECTION OF FALL OF MEDIAN GUTTER CROSS-SLOPES SHALL BE THE SAME AS THE ADJACENT STREET.
4. SEE STANDARD S-3 FOR DETAIL OF INSTALLATION OF GUTTER ADJACENT TO EXISTING A.C.
5. INSTALL MEDIAN CURB WITHOUT THE GUTTER, UNLESS SPECIFICALLY SHOWN ON IMPROVEMENT PLANS.
6. PLACE AGGREGATE BASE UNDER CURB AND GUTTER TO DEPTH OF STRUCTURAL SECTION. (2" MINIMUM THICKNESS)

REVISION	BY	DATE	APP. BY COUNCIL

CITY OF CHICO

STANDARD PLAN

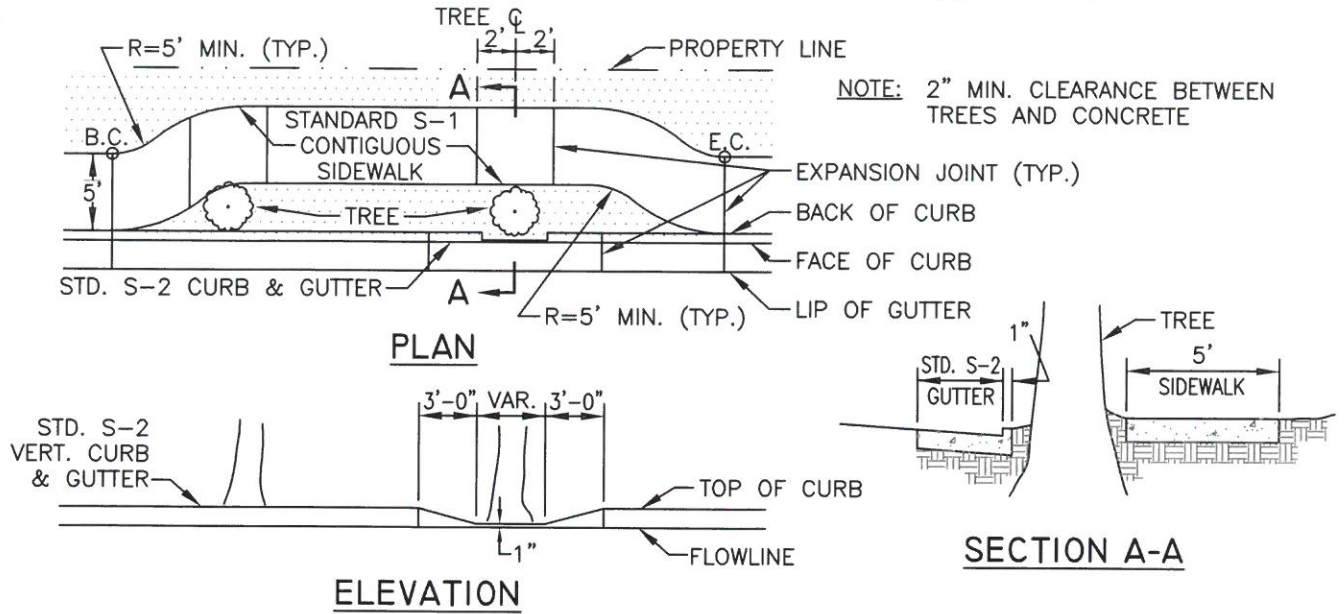
DRAWN BY: GL DATE: 02/2016
 CHECKED BY: BO SCALE: NONE
 APPROVED: [Signature]
 PUBLIC WORKS DIRECTOR-ENGINEERING

P.C.C. CURB AND GUTTER

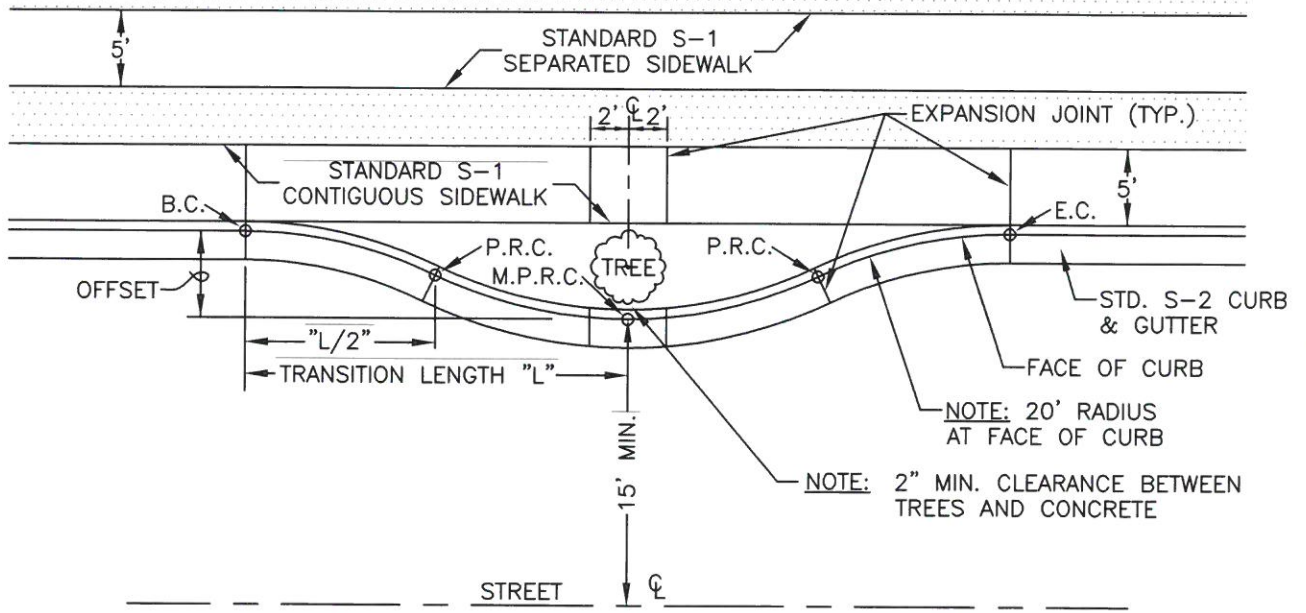
NO. **S-2**

SHEET 1 OF 1

STRAIGHT CURB ALIGNMENT- CONTIGUOUS SIDEWALK



OFFSET CURB ALIGNMENT- SEPARATED OR CONTIGUOUS SIDEWALK



OFFSET	RADIUS	TRANSITION LENGTH	L/2	OFFSET	RADIUS	TRANSITION LENGTH	L/2
1'	20'	8.9'	4.45'	6'	20'	21.1'	10.55'
2'	20'	12.5'	6.25'	7'	20'	22.6'	11.30'
3'	20'	15.2'	7.60'	8'	20'	24.0'	12.00'
4'	20'	17.4'	8.70'	9'	20'	25.3'	12.65'
5'	20'	19.4'	9.70'				

REVISION				
BY				
DATE				
APP. BY COUNCIL				

CITY OF CHICO

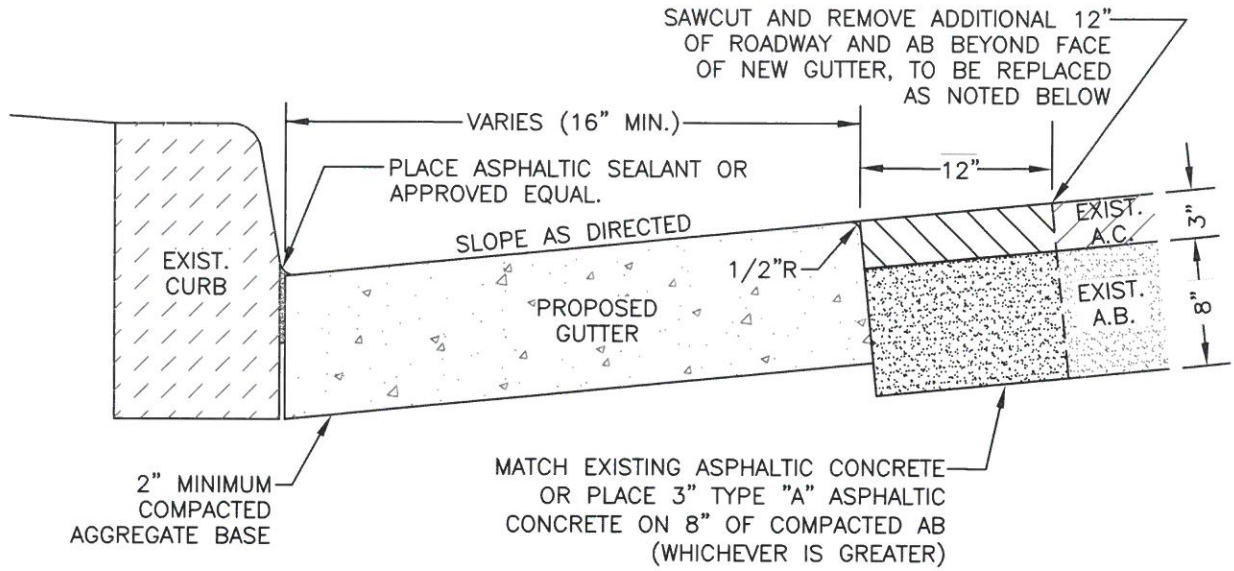
STANDARD PLAN

DRAWN BY: GL DATE: 02/2016
 CHECKED BY: BO SCALE: NONE
 APPROVED: *Paul Oth*
 PUBLIC WORKS DIRECTOR-ENGINEERING

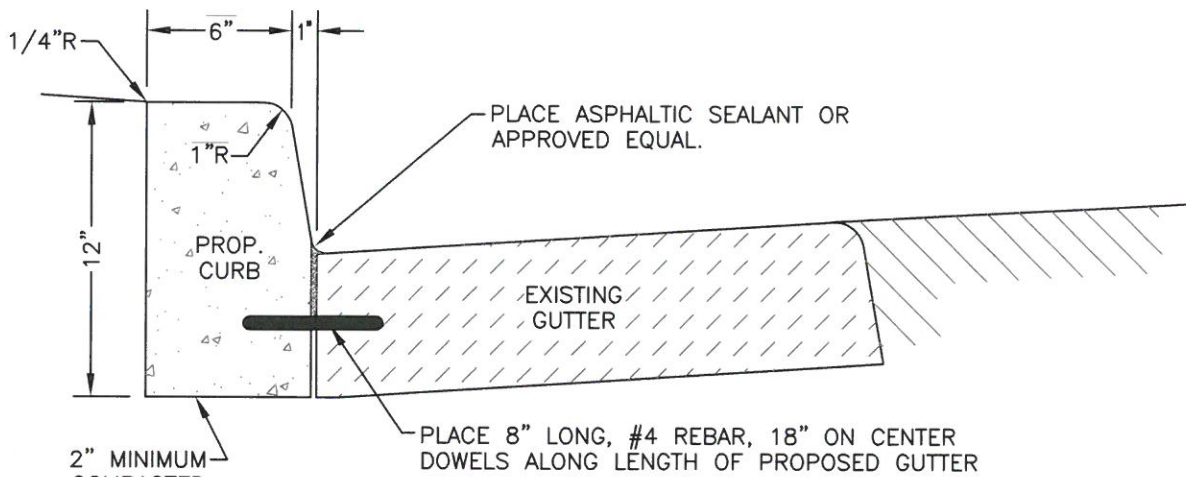
**CURB, GUTTER & SIDEWALK
INSTALLATION AT TREES**

NO.
S-2A

SHEET 1 OF 1



EXISTING CURB-PROPOSED GUTTER



PROPOSED CURB-EXISTING GUTTER

NOTES:

1. WHEN INSTALLING BOTH CURB & GUTTER, POUR MONOLITHIC SECTION.
2. WHEN REPLACING ROLLED CURB & GUTTER, USE STANDARD NO. S-2 IN COMBINATION WITH METHOD OF MATCHING EXISTING A.C. DETAIL (TOP).
3. INSTALL 1/4" WIDE EXPANSION JOINTS, MATCH EXISTING - MAX. INTERVAL 48 FT. AND 1/8" SCORED CONTROL JOINTS, MATCH EXISTING - MAX. INTERVAL 12 FT.
4. ALL CONCRETE IN CITY RIGHT OF WAY SHALL BE CLASS 2 CONCRETE: 590 LBS OF CEMENTITIOUS MATERIAL PER CUBIC YARD, WITH A MINIMUM OF 1 LB OF LAMP BLACK PER CUBIC YARD.
5. CURING COMPOUND SHALL BE USED AT A MINIMUM: PIGMENTED ASTM C-309 TYPE 2 CLASS B OR NON-PIGMENTED ASTM C-309 TYPE 1 CLASS B.

REVISION	BY	DATE	APP. BY COUNCIL

CITY OF CHICO

STANDARD PLAN

DRAWN BY: GL DATE: 02/2016
 CHECKED BY: BO SCALE: NONE
 APPROVED: Paul Ott
 PUBLIC WORKS DIRECTOR-ENGINEERING

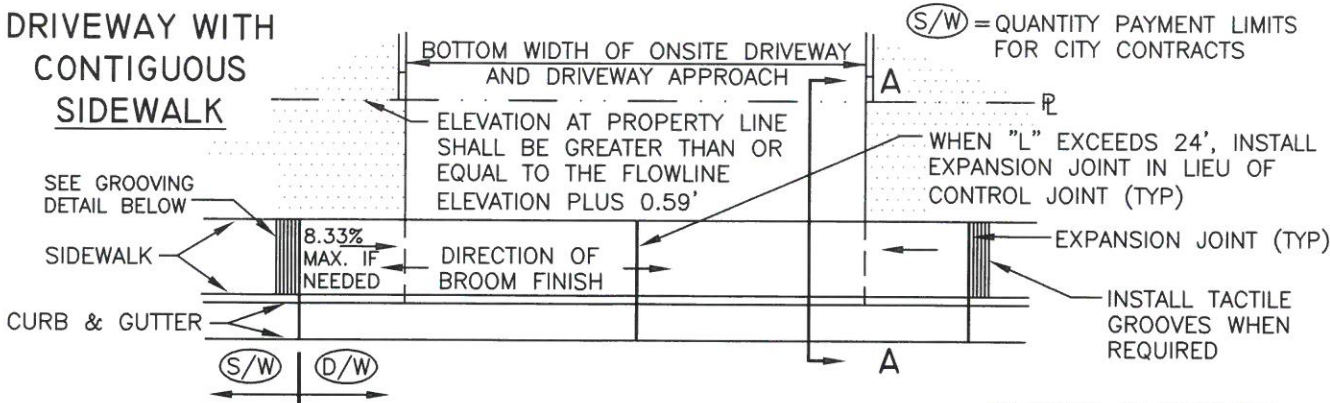
**EXISTING CURB AND/OR
 GUTTER REPLACEMENT
 DETAILS**

NO.
S-3

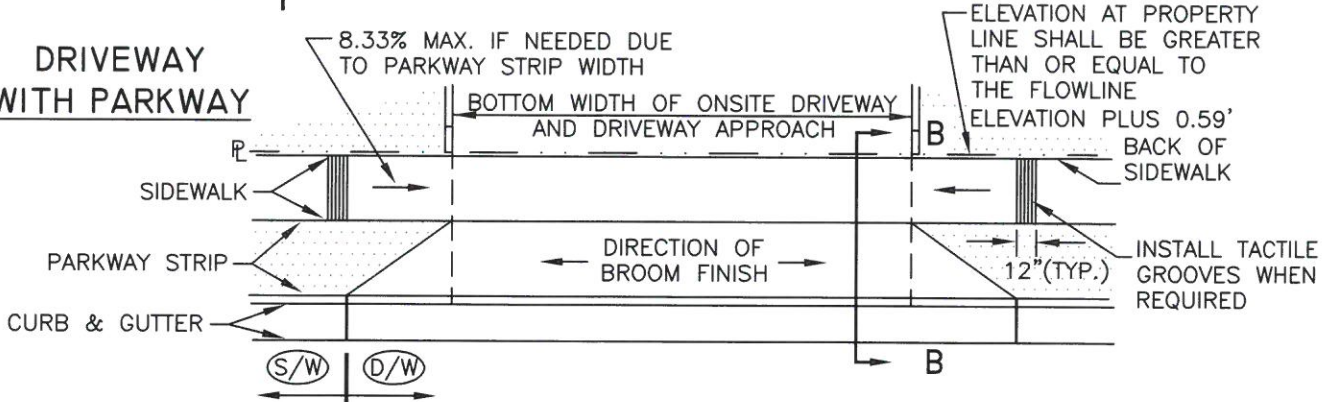
SHEET 1 OF 1

*ALL SIDEWALKS MUST COMPLY WITH CURRENT FEDERAL ADA REQUIREMENTS

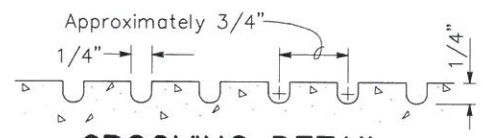
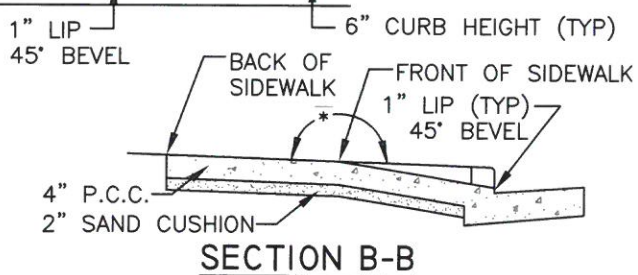
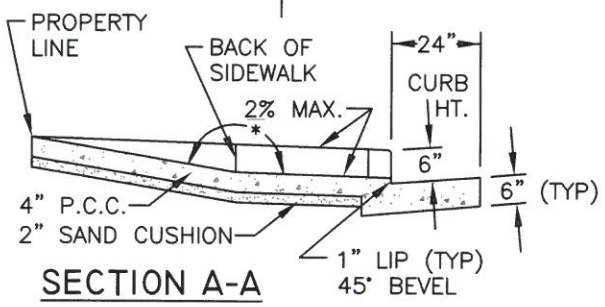
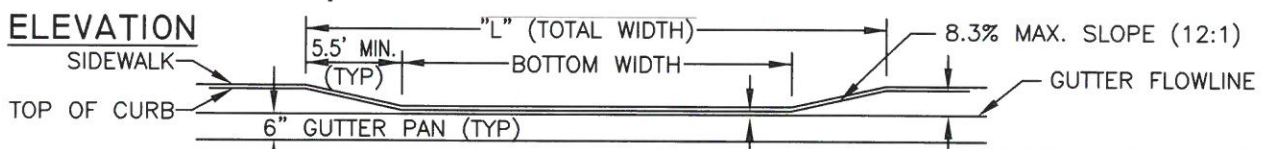
DRIVEWAY WITH CONTIGUOUS SIDEWALK



DRIVEWAY WITH PARKWAY



ELEVATION



NOTES:

1. STANDARD S-5 SHALL BE USED FOR RESIDENTIAL DEVELOPMENTS WITH 3 DWELLING UNITS OR LESS.
2. BOTTOM WIDTH AT FACE OF CURB:

A) SINGLE SPACE AND TANDEM PARKING - 12'	C) ONE WAY - 14' MINIMUM, 18' MAXIMUM
B) TWO SPACES (SIDE BY SIDE) - 18'	D) TWO WAY - 24' MINIMUM, 30' MAXIMUM
3. WHERE CURB HEIGHT IS GREATER THAN 6" AND/OR DISTANCE BETWEEN FACE OF CURB AND FRONT OF SIDEWALK IS LESS THAN 4'6", THE SIDEWALK SHALL BE DEPRESSED TO MAINTAIN MAXIMUM SLOPES.
4. STANDARD S-5 IS NOT REQUIRED IN CONJUNCTION WITH ROLLED CURB AND GUTTER.
5. A 1/4"-DEEP SCORE IS REQUIRED AT THE BOTTOM OF ALL DRIVEWAY WINGS.

*MAX. ALGEBRAIC DIFFERENCE OF 17.5%

REVISION	BY	DATE	APP. BY	COUNCIL

CITY OF CHICO STANDARD PLAN

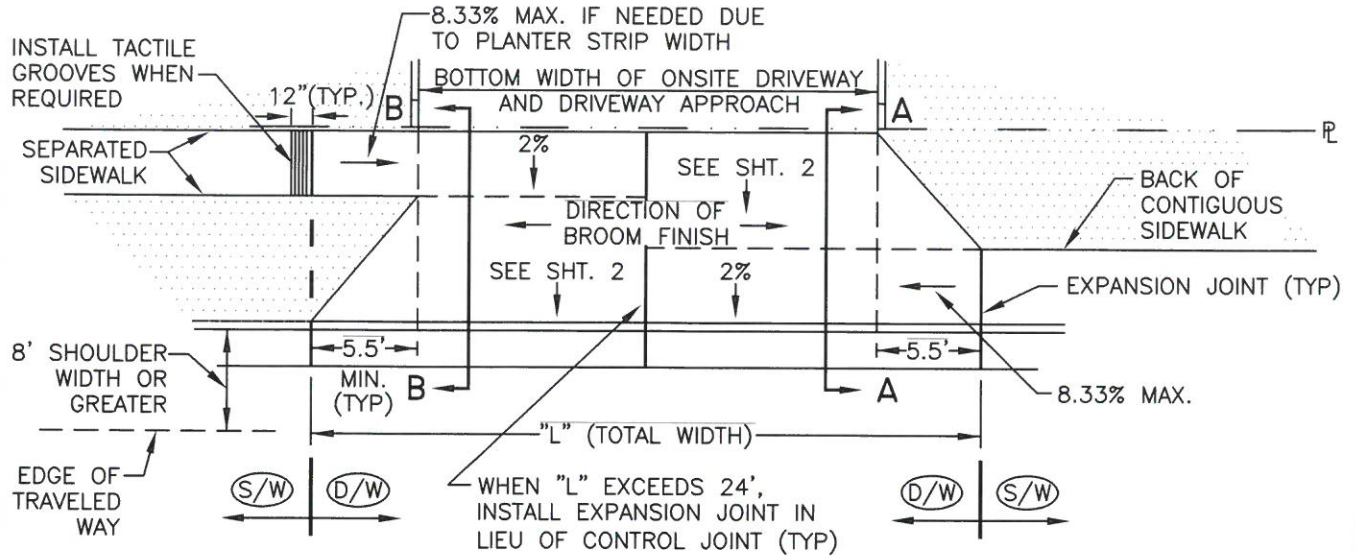
DRAWN BY: GL DATE: 02/2016
 CHECKED BY: BO SCALE: NONE
 APPROVED: [Signature]
 PUBLIC WORKS DIRECTOR-ENGINEERING

RESIDENTIAL DRIVEWAY APPROACH

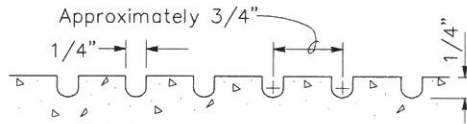
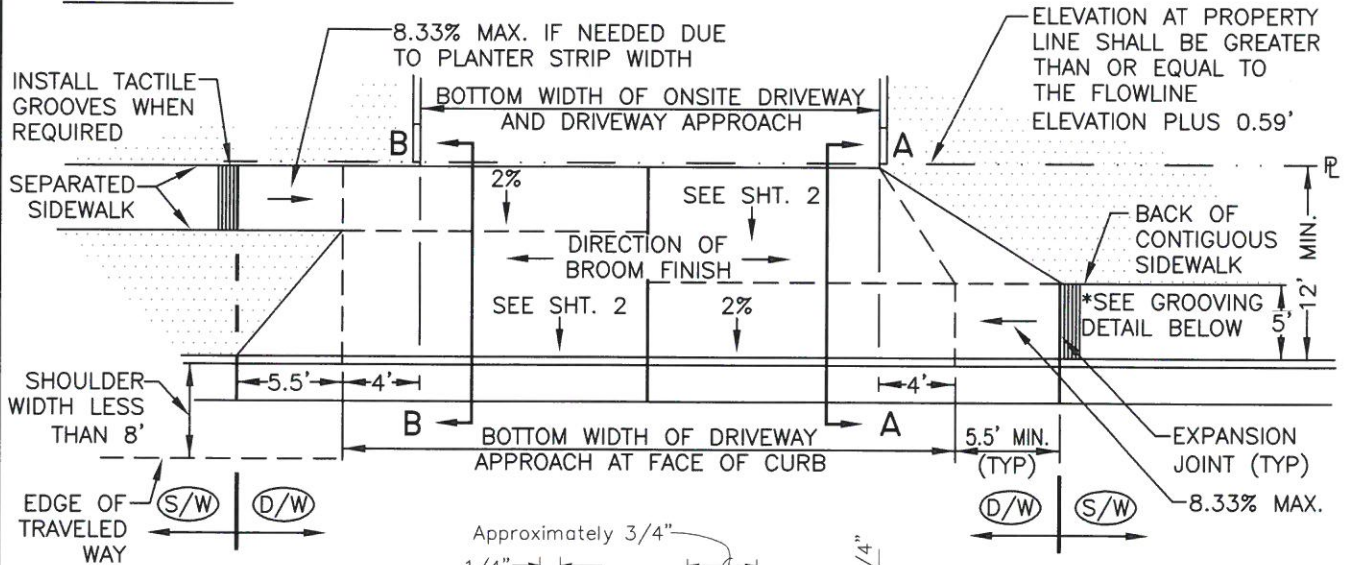
NO. **S-5**
SHEET 1 OF 1

STANDARD DRIVEWAY

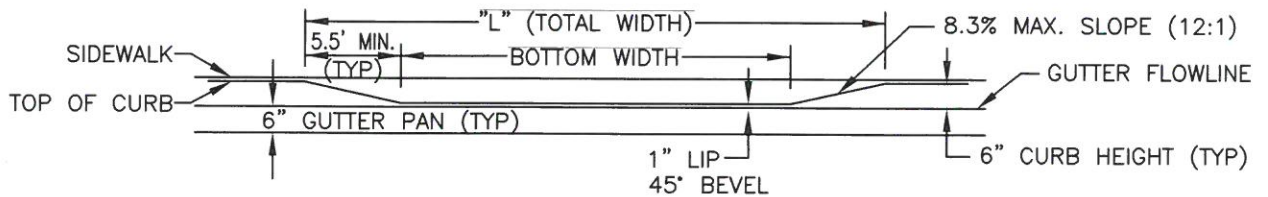
(S/W) = QUANTITY PAYMENT LIMITS FOR CITY CONTRACTS



MODIFIED DRIVEWAY



ELEVATION (STD. D/W)



REVISION	BY	DATE	APP. BY

CITY OF CHICO

STANDARD PLAN

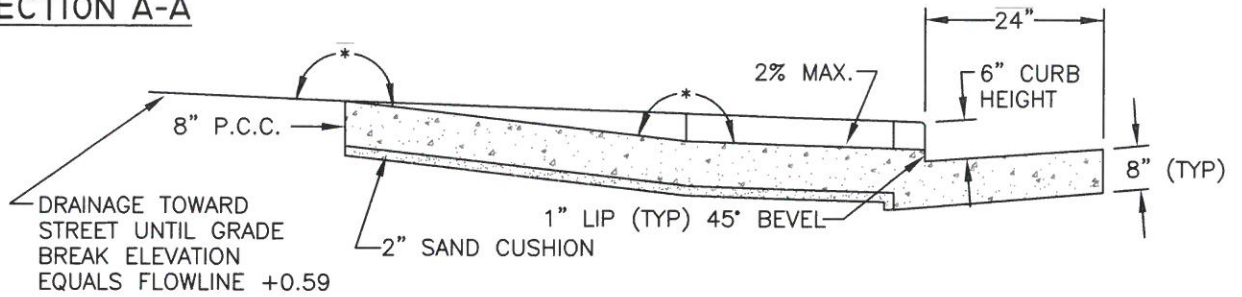
DRAWN BY: GL DATE: 02/2016
 CHECKED BY: BO SCALE: NONE
 APPROVED: [Signature]
 PUBLIC WORKS DIRECTOR-ENGINEERING

COMMERCIAL DRIVEWAY APPROACH

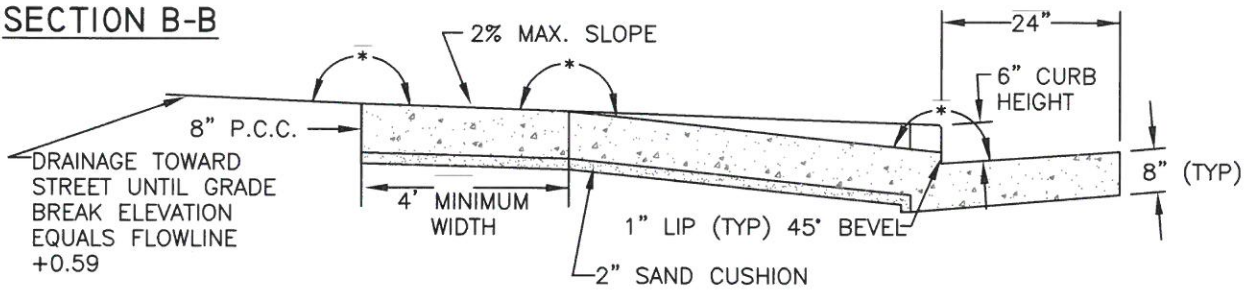
NO. S-5A

SHEET 1 OF 2

SECTION A-A



SECTION B-B



* MAX. ALGEBRAIC DIFFERENCE OF 17.5%

NOTES:

1. STANDARD S-5A SHALL BE USED FOR COMMERCIAL AND INDUSTRIAL DEVELOPMENTS, RESIDENTIAL DEVELOPMENTS WITH GREATER THAN 8 ONSITE PARKING SPACES AND PRIVATE STREET SUBDIVISIONS.
2. MODIFIED DRIVEWAY SHALL BE USED WHERE ROADWAY SHOULDER IS LESS THAN 8'.
3. BOTTOM WIDTH OF STANDARD DRIVEWAY AT FACE OF CURB:
 - A) ONE WAY - 14' MINIMUM, 18' MAXIMUM
 - B) TWO WAY - 24' MINIMUM, 30' MAXIMUM
4. BOTTOM WIDTH OF MODIFIED DRIVEWAY AT FACE OF CURB:
 - A) ONE WAY - 22' MINIMUM, 26' MAXIMUM
 - B) TWO WAY - 32' MINIMUM, 38' MAXIMUM
5. WHEN DRIVEWAY SERVES AS ALLEY APPROACH, REINFORCEMENT REQUIRED WITH 6" SIDEWALK.

REVISION			
BY			
DATE			
APP. BY COUNCIL			

CITY OF CHICO

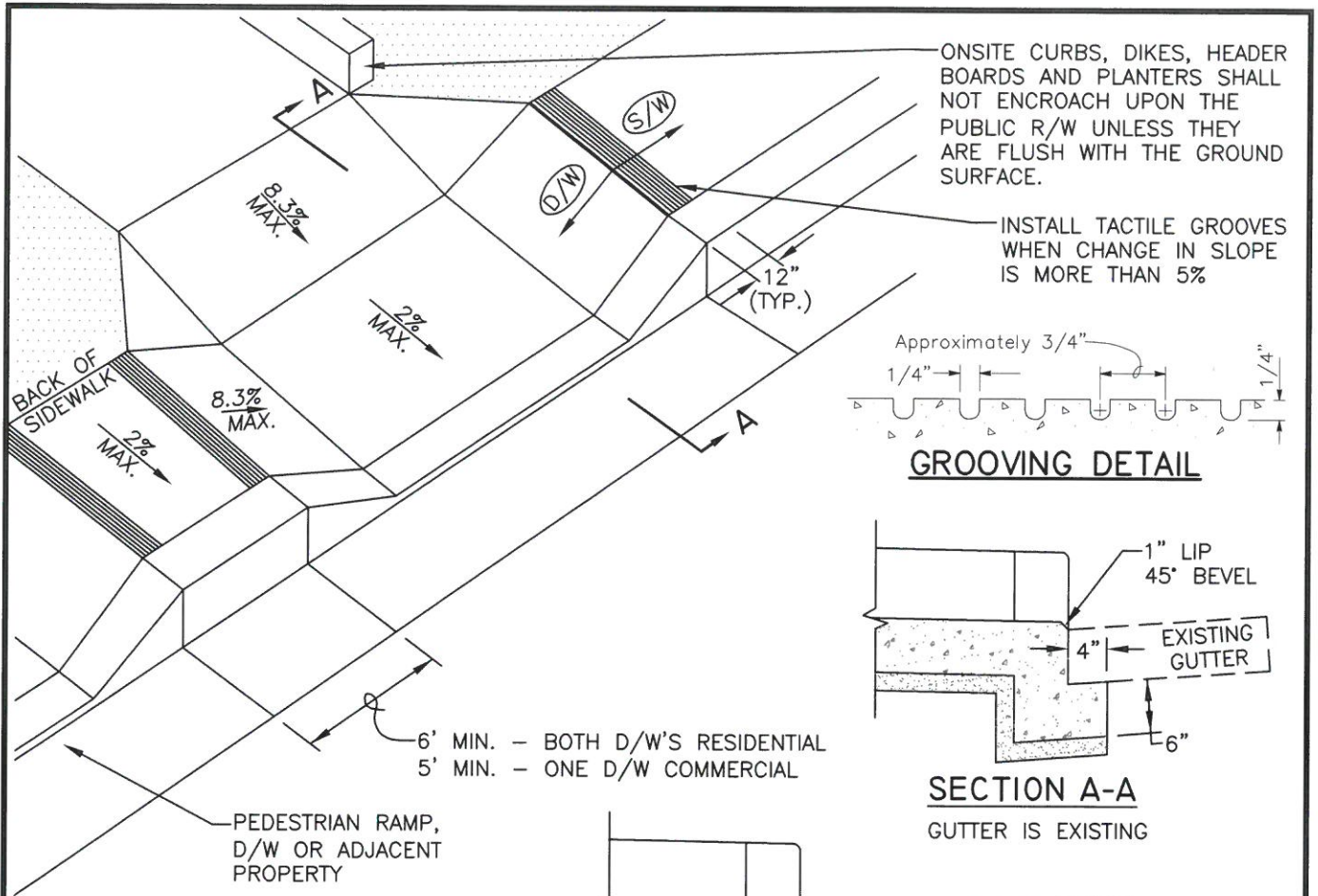
STANDARD PLAN

DRAWN BY: GL DATE: 02/2016
 CHECKED BY: BO SCALE: NONE
 APPROVED: [Signature]
 PUBLIC WORKS DIRECTOR-ENGINEERING

**COMMERCIAL
DRIVEWAY APPROACH**

NO.
S-5A

SHEET 2 OF 2



(S/W) = QUANTITY PAYMENT LIMITS FOR CITY CONTRACTS

* MAX. ALGEBRAIC DIFFERENCE OF 17.5%

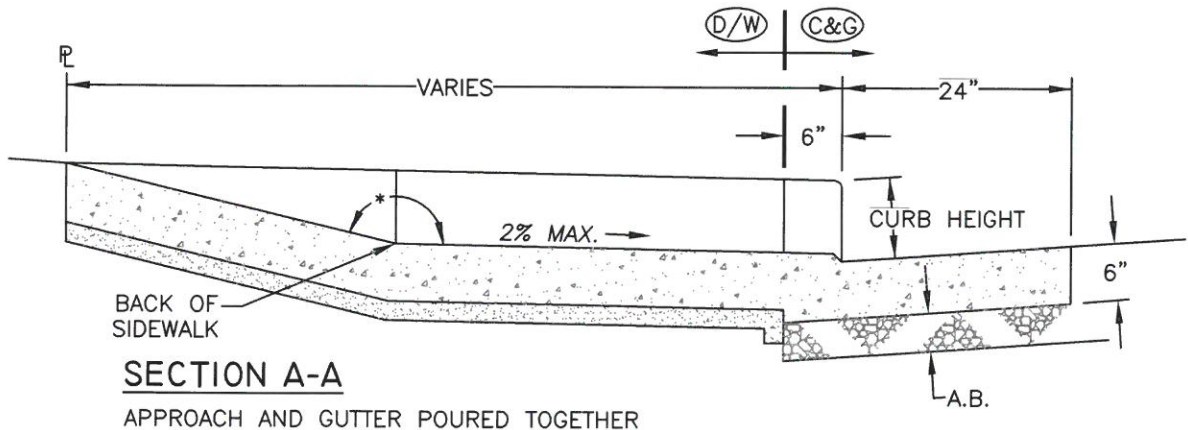
2" SAND CUSHION

6"

12" #4 DOWELS SPACED AT 18" ON CENTER DRILLED AND EPOXIED INTO EXISTING

SECTION A-A

CURB OR CURB & GUTTER IS EXISTING OR POURED SEPERATELY (COMMERCIAL DRIVEWAY ONLY)



REVISION	BY	DATE	APP. BY	COUNCIL

CITY OF CHICO

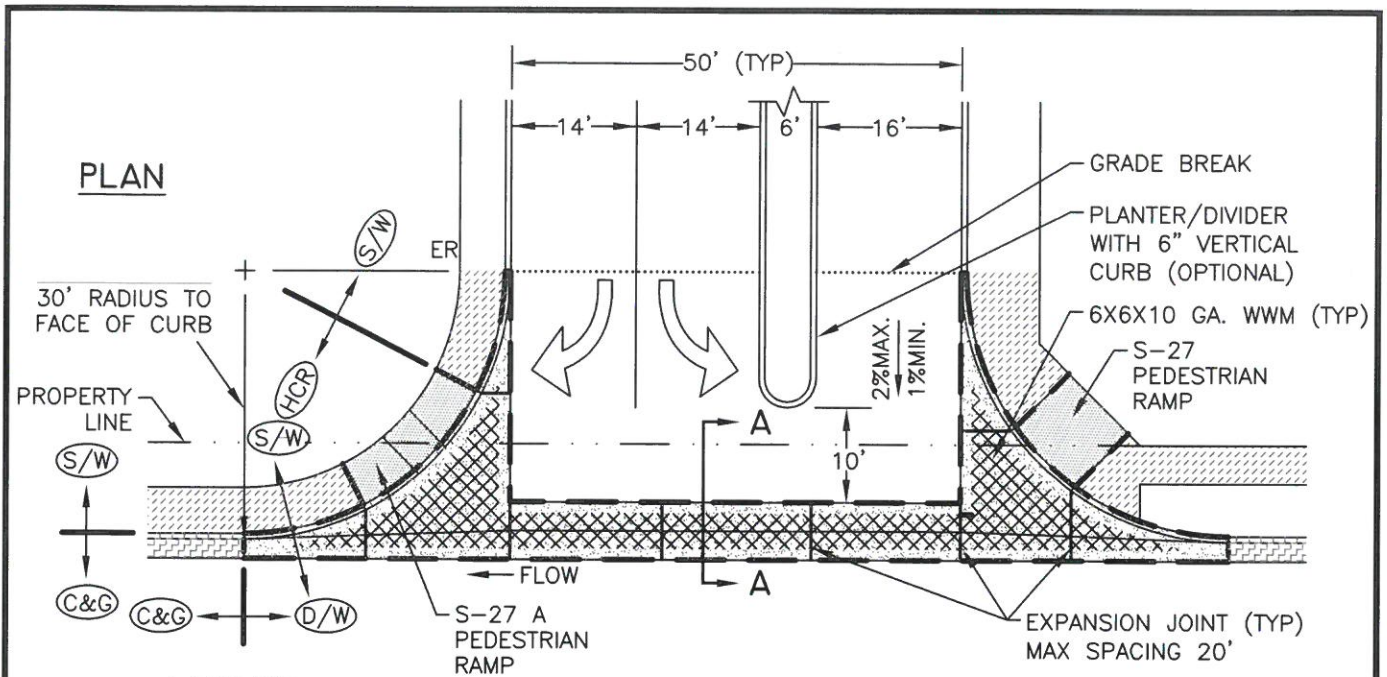
STANDARD PLAN

DRAWN BY: GL DATE: 02/2016
 CHECKED BY: BO SCALE: NONE
 APPROVED: [Signature]
 DIRECTOR OF PUBLIC WORKS-ENGINEERING

CURB, GUTTER AND DRIVEWAY DETAILS

NO. **S-5B**

SHEET 1 OF 1



LEGEND

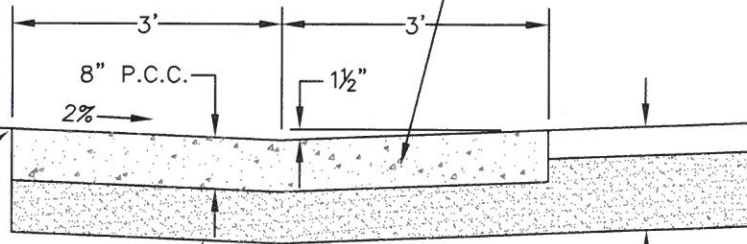
- (D/W) = QUANTITY PAYMENT LIMITS FOR CITY CONTRACTS
- = DRIVEWAY PAYMENT LIMITS
- [Pattern: Dotted] = 8" P.C.C. D/W, C&G AND VALLEY GUTTER
- [Pattern: Diagonal Lines] = P.C.C. S/W
- [Pattern: Cross-hatch] = P.C.C. C&G
- [Pattern: Horizontal Lines] = P.C.C. PEDESTRIAN RAMP

END OF 30' RADIUS CURB RETURN

1% MIN. (1/8"/FT.) 2% MAX. (1/4"/FT.)

SECTION A-A

ONSITE A.C. TO BE FLUSH WITH GUTTER LIP



MAINTAIN A.B. THICKNESS UNDER ALL DRIVEWAY CONCRETE

FOR ROAD SECTION REFER TO S-18A

NOTES:

1. STD S-5C SHALL BE USED FOR MAJOR COMMERCIAL, INDUSTRIAL AND RESIDENTIAL DEVELOPMENTS IN ACCORDANCE WITH APPROVED PLANS.
2. DRAINAGE TO VALLEY GUTTER RESTRICTED TO DRIVEWAY AREA WITHIN 30' OF FACE OF CURB.
3. NO INTERIOR PARKING LOT AISLE SHALL INTERSECT THE DRIVEWAY WITHIN 100' OF PROPERTY LINE.
4. LEFT TURN STORAGE LANE LENGTH SHALL BE 75' MINIMUM.
5. THE ONSITE DRIVEWAY LANE CONFIGURATION SHOWN HEREON IS PROVIDED TO ILLUSTRATE TYPICAL CRITERIA TO BE USED WITH THIS INSTALLATION. ACTUAL LANE CONFIGURATION SHALL BE IN ACCORDANCE WITH APPROVED PLANS.

REVISION	BY	DATE	APP. BY COUNCIL

CITY OF CHICO

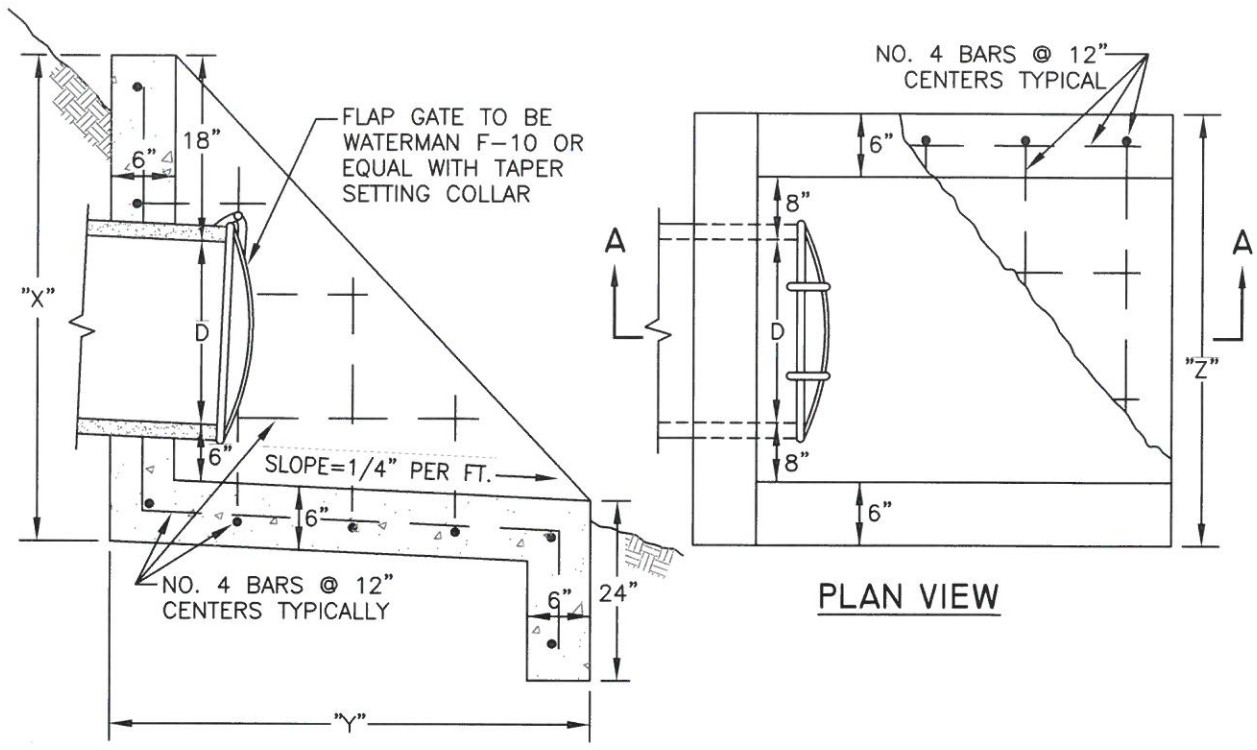
STANDARD PLAN

DRAWN BY: GL DATE: 02/2016
 CHECKED BY: BO SCALE: NONE
 APPROVED: *Paul Otter*
 PUBLIC WORKS DIRECTOR-ENGINEERING

**CURBED DRIVEWAY
ENTRANCE**

NO.
S-5C

SHEET 1 OF 1

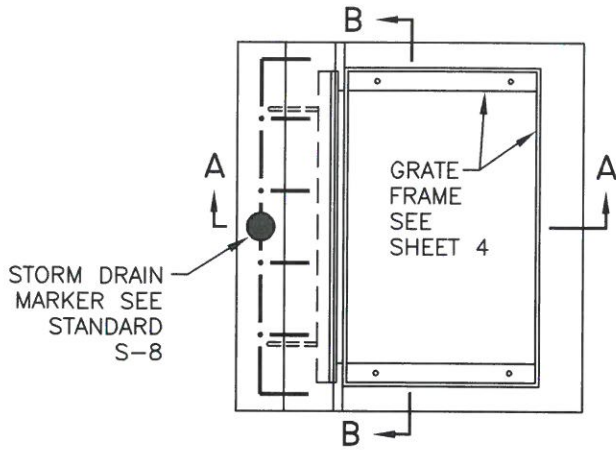


SECTION A-A

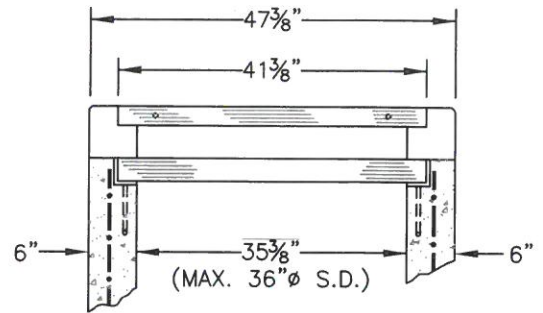
PIPE DIAMETER	HEADWALL WIDTH	VARIABLE DIMENSIONS					
		SLOPE = 1:1		SLOPE = 1.5:1		SLOPE = 2:1	
D	"Z"	"X"	"Y"	"X"	"Y"	"X"	"Y"
	D+2'-4"	D+2'-6"	D+2'-6"	D+2'-6"	1.5(D+2'-6")	D+2'-6"	2(D+2'-6")
8"	3'-0"	3'-2"	3'-2"	3'-2"	4'-9"	3'-2"	6'-4"
10"	3'-2"	3'-4"	3'-4"	3'-4"	5'-0"	3'-4"	6'-8"
12"	3'-4"	3'-6"	3'-6"	3'-6"	5'-3"	3'-6"	7'-0"
15"	3'-7"	3'-9"	3'-9"	3'-9"	5'-7½"	3'-9"	7'-6"
18"	3'-10"	4'-0"	4'-0"	4'-0"	6'-0"	4'-0"	8'-0"
21"	4'-1"	4'-3"	4'-3"	4'-3"	6'-4½"	4'-3"	8'-6"
24"	4'-4"	4'-6"	4'-6"	4'-6"	6'-9"	4'-6"	9'-0"
27"	4'-7"	4'-9"	4'-9"	4'-9"	7'-1½"	4'-9"	9'-6"
30"	4'-10"	5'-0"	5'-0"	5'-0"	7'-6"	5'-0"	10'-0"
36"	5'-4"	5'-6"	5'-6"	5'-6"	8'-3"	5'-6"	11'-0"
42"	5'-10"	6'-0"	6'-0"	6'-0"	9'-0"	6'-0"	12'-0"

REVISION	BY	DATE	APP. BY

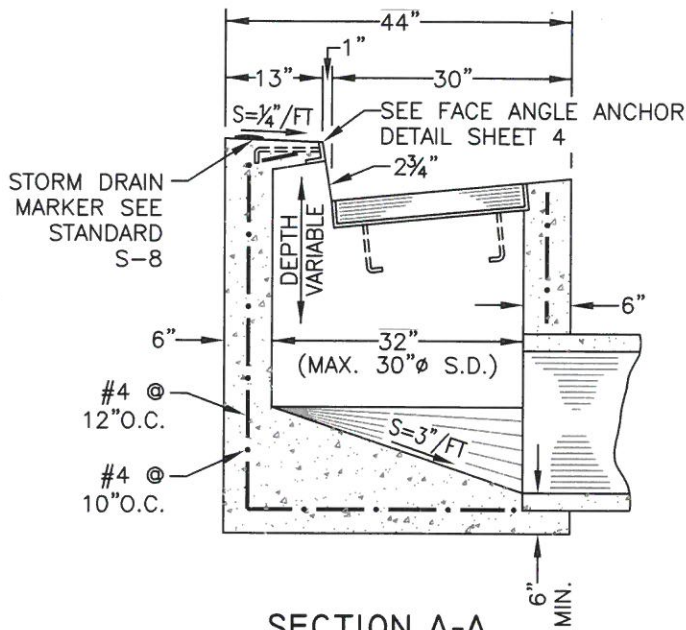
CITY OF CHICO		STANDARD PLAN	
DRAWN BY: <u>GL</u> DATE: <u>02/2016</u> CHECKED BY: <u>BO</u> SCALE: <u>NONE</u> APPROVED: <u>[Signature]</u> PUBLIC WORKS DIRECTOR-ENGINEERING	STORM DRAIN HEADWALL		NO. S-6 SHEET 1 OF 1



PLAN



SECTION B-B



SECTION A-A

NOTES:

1. WALL THICKNESS SHALL BE 8" WHEN DEPTH OF D.I. IS GREATER THAN 8'.
2. PIPES CAN BE PLACED IN ANY WALL.
3. SEE SHEET 2 OF 4 FOR D.I. CUT AWAY VIEW.
4. SEE SHEETS 3 & 4 FOR GRATE & FRAME DETAILS.
5. CAST-IN-PLACE OR PRECAST ALTERNATIVE IS OPTIONAL WITH CONTRACTOR; SEE STANDARD SPECS.
6. AT CONTRACTOR'S OPTION, 60" TRANSITIONS & D.I. TOP MAY BE MONOLITHIC POUR.
7. MARKERS MAY BE CAST-IN-PLACE BY MANUFACTURER OF INLET TOP.

REVISION	BY	DATE	APP. BY
	MJD	08/15	

CITY OF CHICO

STANDARD PLAN

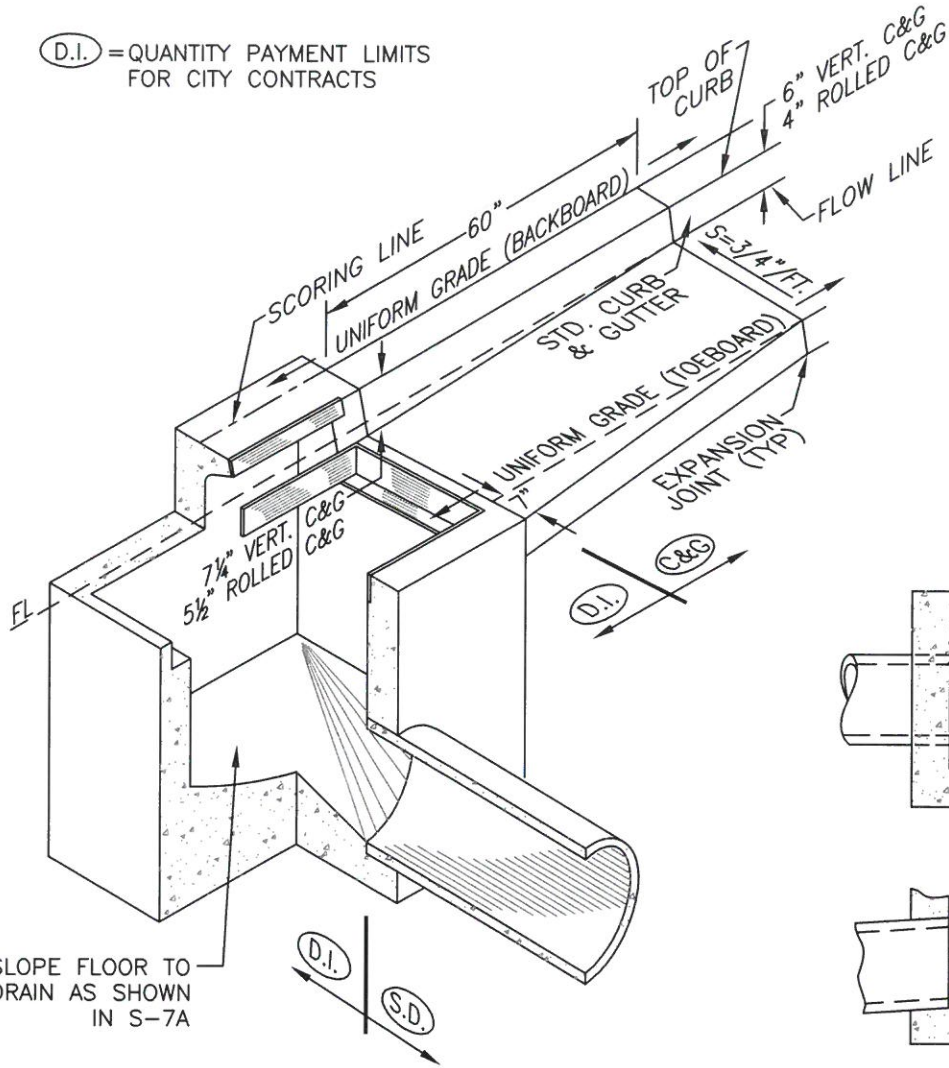
DRAWN BY: GL DATE: 02/2016
 CHECKED BY: BO SCALE: NONE
 APPROVED: [Signature]
 PUBLIC WORKS DIRECTOR-ENGINEERING

**36" DROP INLET
(CAL - TRANS "G-0")**

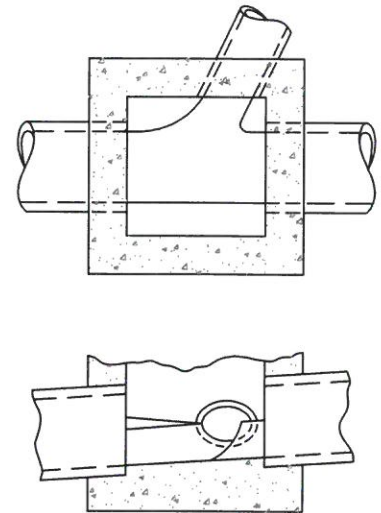
NO.
S-7

SHEET 1 OF 4

(D.I.) = QUANTITY PAYMENT LIMITS FOR CITY CONTRACTS



D.I. CUT AWAY VIEW



SHAPING OF INVERT

NOTE: USE WHEN MORE THAN ONE PIPE CONNECTS TO THE D.I.

NOTES:

1. WALL THICKNESS SHALL BE 8" WHEN DEPTH OF D.I. IS GREATER THAN 8'.
2. PIPES CAN BE PLACED IN ANY WALL.
3. SEE SHEET 2 OF 4 FOR D.I. CUT AWAY VIEW.
4. SEE SHEETS 3 & 4 FOR GRATE & FRAME DETAILS.
5. CAST-IN-PLACE OR PRECAST ALTERNATIVE IS OPTIONAL WITH CONTRACTOR; SEE STANDARD SPECS.
6. AT CONTRACTOR'S OPTION, 60" TRANSITIONS & D.I. TOP MAY BE MONOLITHIC POUR.

REVISION	BY	DATE	APP. BY COUNCIL

CITY OF CHICO

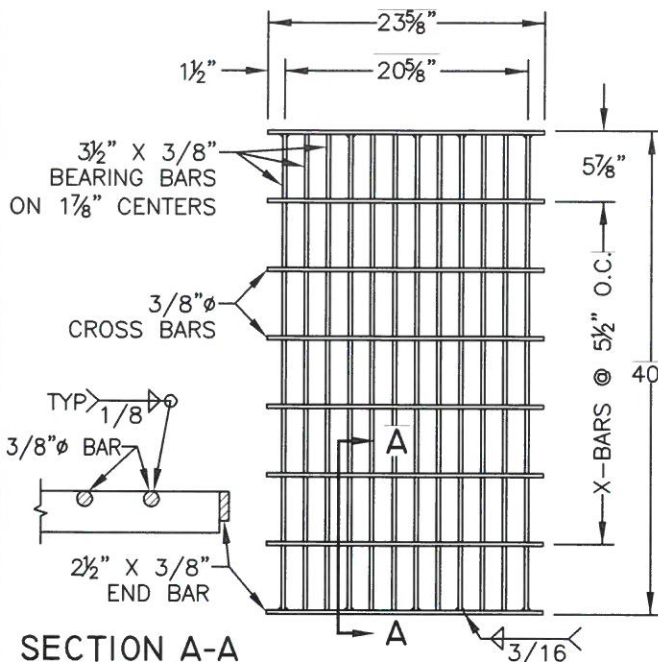
STANDARD PLAN

DRAWN BY: GL DATE: 02/2016
 CHECKED BY: BO SCALE: NONE
 APPROVED: [Signature]
 PUBLIC WORKS DIRECTOR-ENGINEERING

**36" DROP INLET
(CAL - TRANS "G-0")**

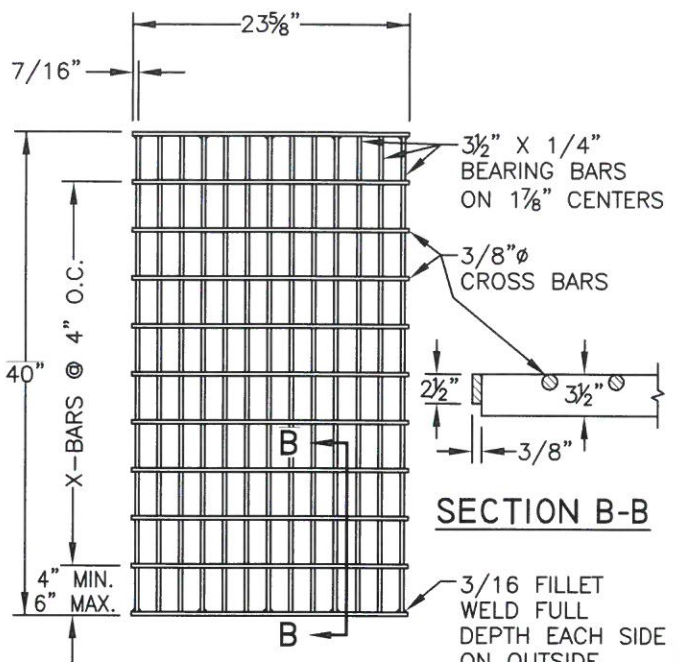
NO.
S-7

SHEET 2 OF 4



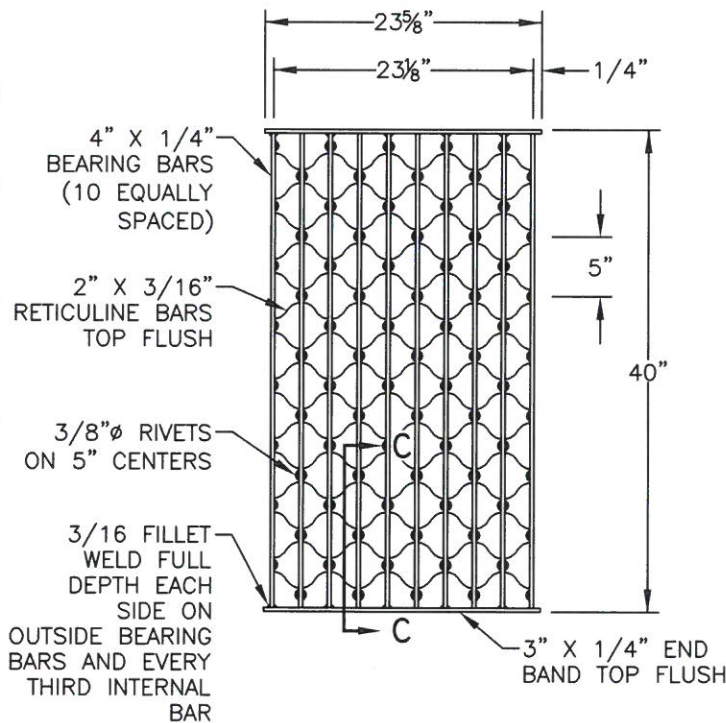
SECTION A-A

24-12X GRATE
(WELDED STEEL)

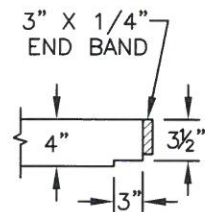


SECTION B-B

24-13 GRATE
(WELDED STEEL)



24-10S GRATE
(WELDED STEEL)
RETICULINE TYPE



SECTION C-C

NOTES:

1. GRATE TYPE NUMBERS REFER TO WIDTH OF GRATE IN INCHES AND NUMBER OF BARS, RESPECTIVELY.
2. CROSS BARS MAY BE FILLET WELDED, RESISTANCE WELDED OR ELECTROFORGED TO BEARING BARS.
3. ROUNDED TOP OF BARS OPTIONAL ON ALL GRATES.
4. ALL GRATES SHALL BE GALVANIZED IN ACCORDANCE WITH SECTION 75-1.05 OF THE STANDARD SPECIFICATIONS.

REVISION	BY	DATE	APP. BY COUNCIL

CITY OF CHICO

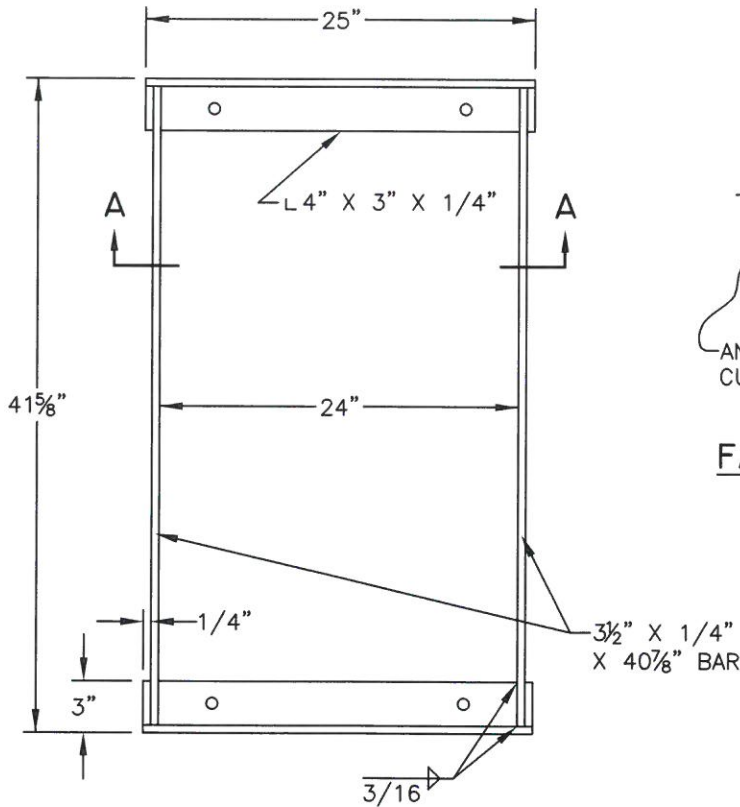
STANDARD PLAN

DRAWN BY: GL DATE: 02/2016
 CHECKED BY: BO SCALE: NONE
 APPROVED: [Signature]
 PUBLIC WORKS DIRECTOR-ENGINEERING

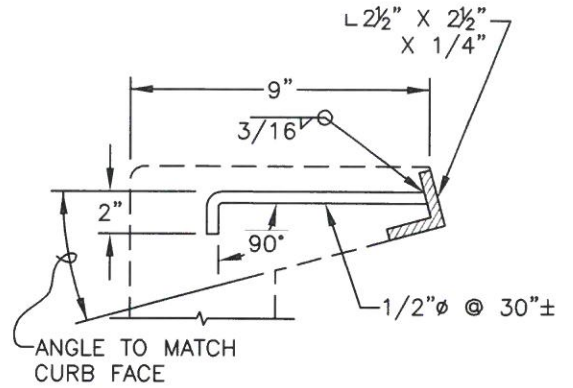
**GRATE DETAILS (CAL TRANS
STANDARD D-77-A & D-77-B)**

NO.
S-7

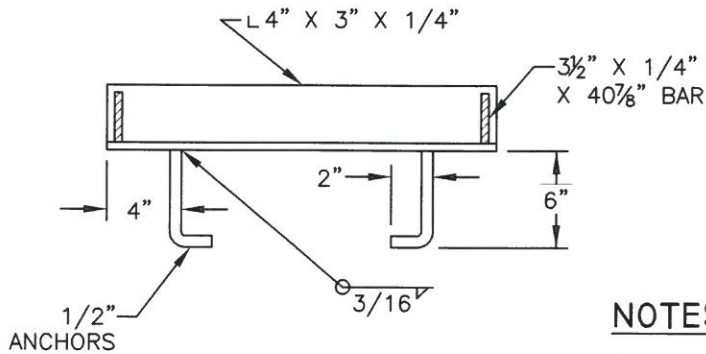
SHEET 3 OF 4



GRATE FRAME



FACE ANGLE ANCHOR DETAIL



SECTION A-A

NOTES:

- 1. FULL PENETRATION BUTT WELDS MAY BE SUBSTITUTED FOR FILLET WELDS ON ANCHORS.
- 2. ALL FRAMES SHALL BE GALVANIZED IN ACCORDANCE WITH SECTION 75-1.05 OF THE STANDARD SPECIFICATIONS.

REVISION	BY	DATE	APP. BY	COUNCIL

CITY OF CHICO

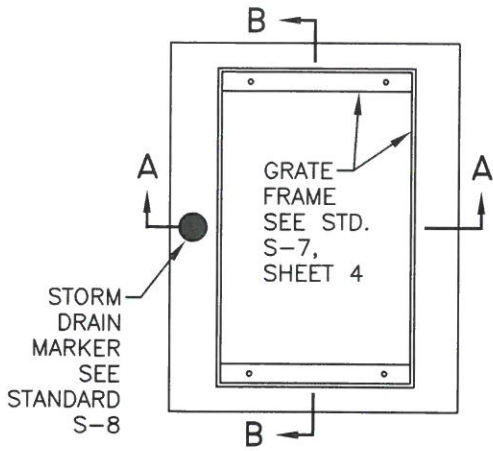
STANDARD PLAN

DRAWN BY: GL DATE: 02/2016
 CHECKED BY: BO SCALE: NONE
 APPROVED: Burl Otter
 PUBLIC WORKS DIRECTOR-ENGINEERING

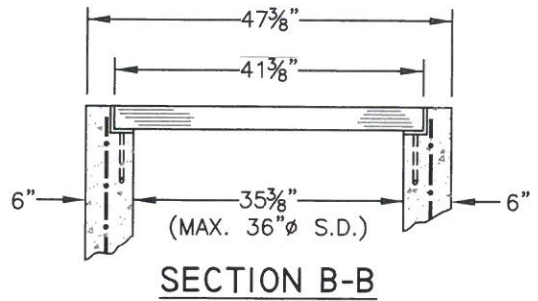
GRATE FRAME & FACE ANGLE ANCHOR DETAILS (CAL TRANS STANDARD D-77-A & D-77-B)

NO. **S-7**

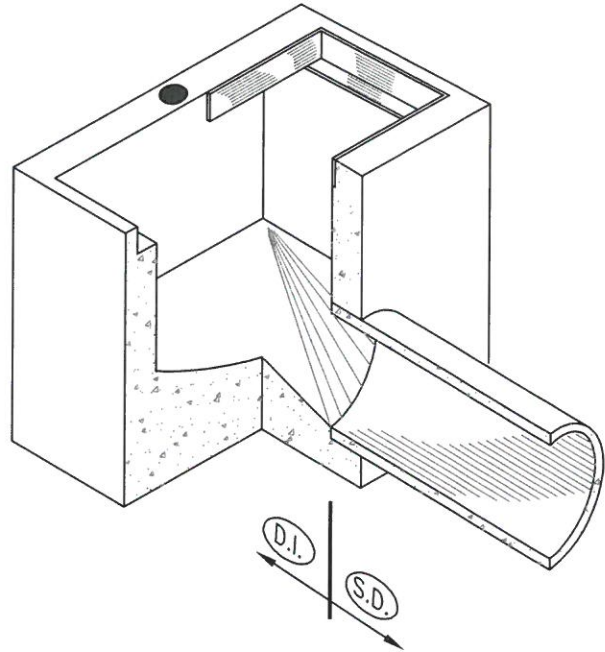
SHEET 4 OF 4



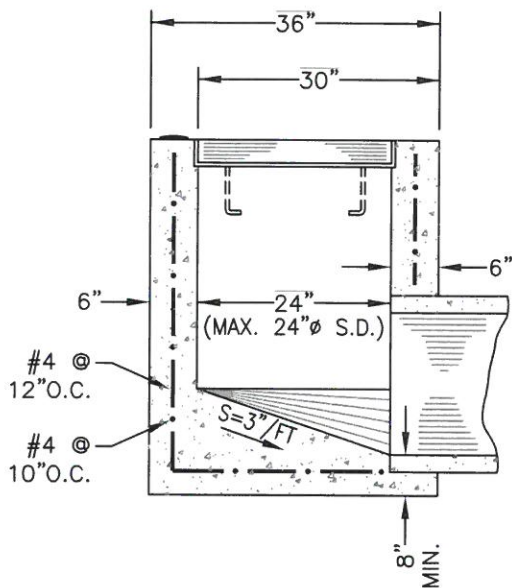
PLAN



SECTION B-B



D.I. CUT AWAY VIEW

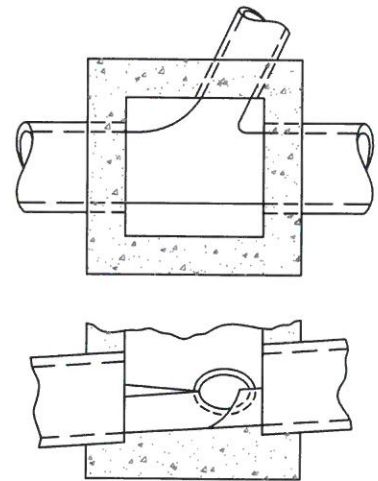


SECTION A-A

(D.I.) = QUANTITY PAYMENT LIMITS FOR CITY CONTRACTS

NOTES:

1. WALL THICKNESS SHALL BE 8" WHEN DEPTH OF D.I. IS GREATER THAN 8'.
2. PIPES CAN BE PLACED IN ANY WALL.
3. SEE STANDARD S-7 FOR FRAME AND GRATE DETAILS.
4. CAST-IN-PLACE OR PRECAST ALTERNATIVE IS OPTIONAL WITH CONTRACTOR; SEE STANDARD SPECS.
5. THIS DROP INLET SHALL BE USED FOR PUBIC STORM DRAINS IN ALLEYS AND EASEMENTS.



SHAPING OF INVERT

NOTE: USE WHEN MORE THAN ONE PIPE CONNECTS TO THE D.I.

REVISION	BY	DATE	APP. BY

CITY OF CHICO

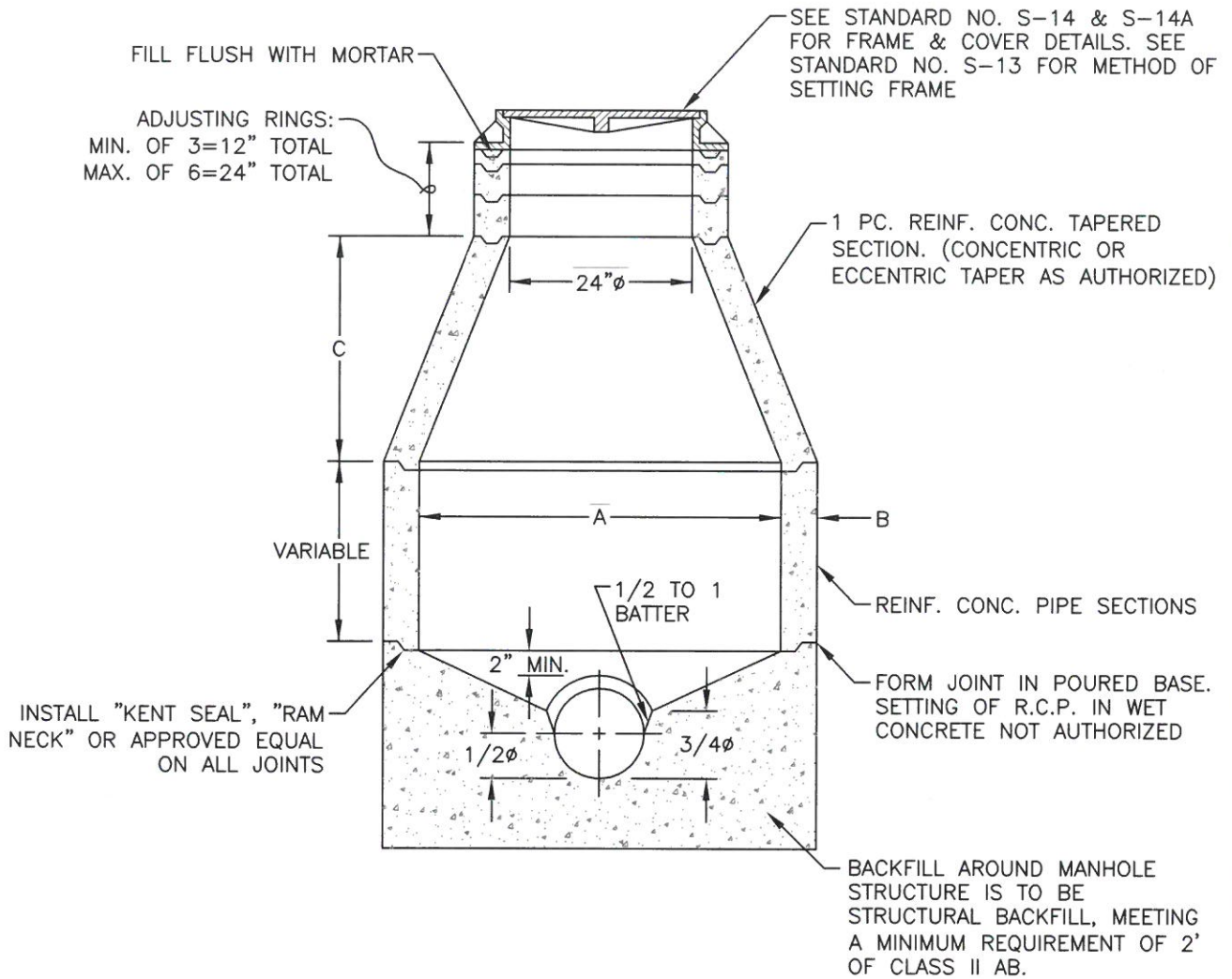
STANDARD PLAN

DRAWN BY: GL DATE: 02/2016
 CHECKED BY: BO SCALE: NONE
 APPROVED: [Signature]
 PUBLIC WORKS DIRECTOR-ENGINEERING

**FLAT GRATE INLET
(CAL - TRANS "G-1")**

NO.
S-7A

SHEET 1 OF 1



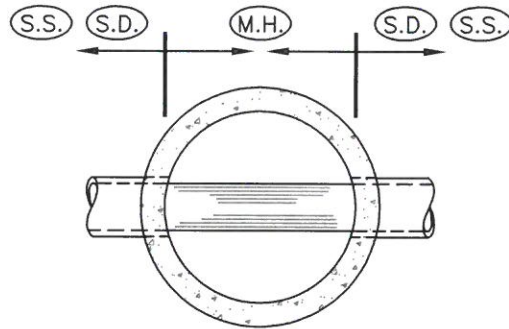
THE MANHOLE BASE SHALL BE:

1. CLASS B CONCRETE POURED AGAINST UNDISTURBED EARTH, OR:
2. A PRECAST BASE WITH GASKETED JOINTS, PLACED ON 6" MINIMUM A.B., COMPACTED TO 95% RELATIVE DENSITY.

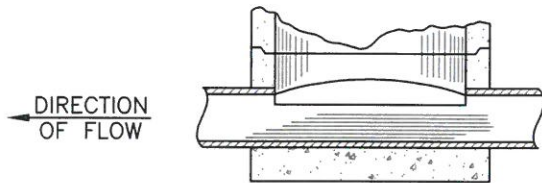
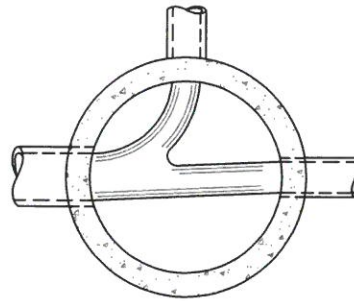
A	B	C	NOTES
M.H. DIA. 36"	4"	12"	MANHOLE FOR CONNECTION OF PRIVATE LINE TO PUBLIC MAIN WHEN SHOWN ON PLANS.
M.H. DIA. 48"	4"	24" to 30"	MANHOLE SHALL BE USED UNLESS OTHERWISE SPECIFIED.
M.H. DIA. 60"	5"	24" to 30"	DIMENSIONS IN ACCORDANCE WITH A.S.T.M. C-478-70 AS AMENDED.

REVISION	BY	DATE	APP. BY COUNCIL

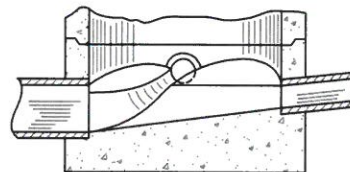
CITY OF CHICO		STANDARD PLAN	
DRAWN BY: <u>GL</u>	DATE: <u>02/2016</u>	STORM DRAIN AND SANITARY SEWER MANHOLE	NO. S-10
CHECKED BY: <u>BO</u>	SCALE: <u>NONE</u>		
APPROVED: <u><i>Bo Ott</i></u>	PUBLIC WORKS DIRECTOR-ENGINEERING		
		SHEET 1 OF 2	



BREAK AWAY TOP
1/2 OF PIPE



SECTION OF PIPE CONTINUOUS
THROUGH MANHOLE



JUNCTION MANHOLE BETWEEN
DIFFERENT PIPE SIZES

SHAPING BOTTOM OF MANHOLE

(S.D.) = QUANTITY PAYMENT LIMITS
FOR CITY CONTRACTS

REVISION	BY	DATE	APP. BY COUNCIL

CITY OF CHICO

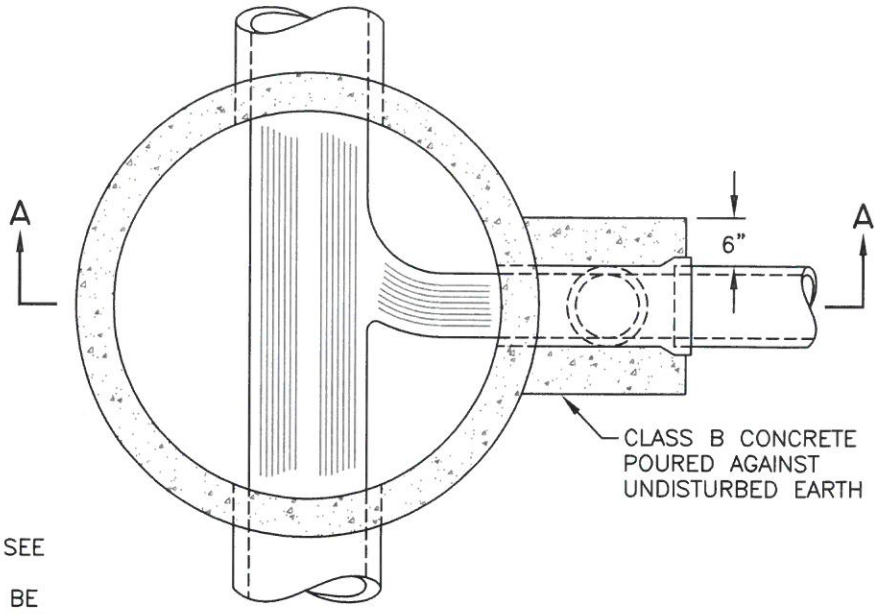
STANDARD PLAN

DRAWN BY: GL DATE: 02/2016
 CHECKED BY: BO SCALE: NONE
 APPROVED: *[Signature]*
 PUBLIC WORKS DIRECTOR-ENGINEERING

**STORM DRAIN AND
SANITARY SEWER MANHOLE**

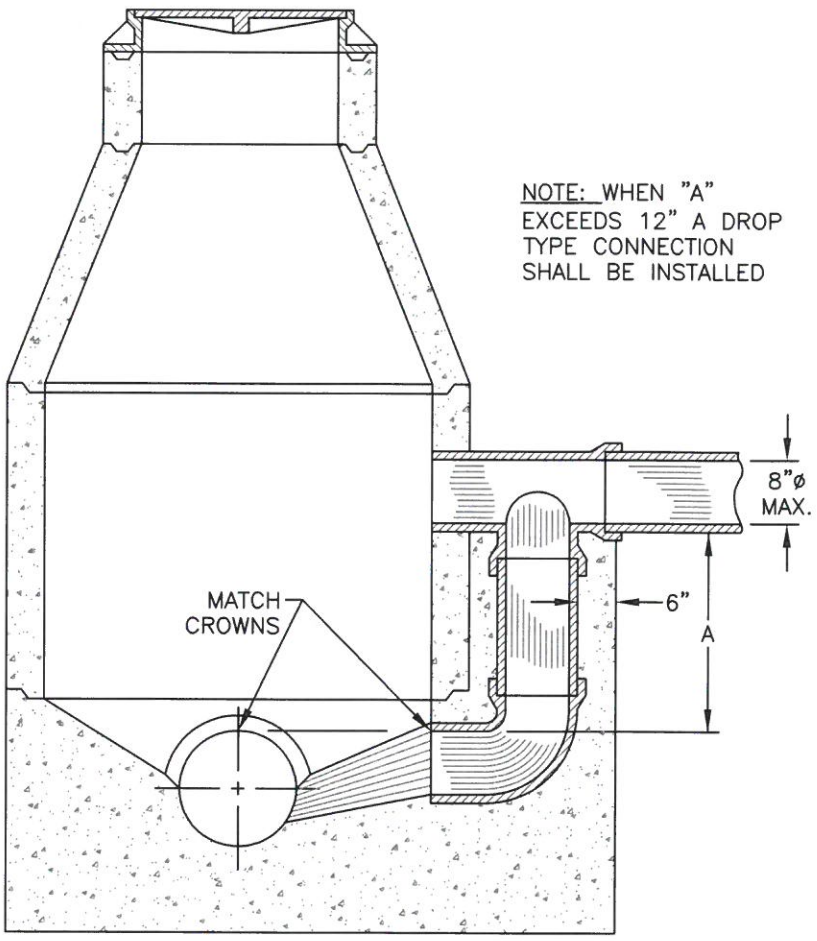
NO.
S-10

SHEET 2 OF 2



NOTE: FOR STANDARD
MANHOLE DIMENSIONS SEE
STANDARD NO. S-10.
DROP CONNECTION TO BE
USED ONLY FOR LINES OF
8"Ø OR LESS

CLASS B CONCRETE
POURED AGAINST
UNDISTURBED EARTH



NOTE: WHEN "A"
EXCEEDS 12" A DROP
TYPE CONNECTION
SHALL BE INSTALLED

SECTION A-A

REVISION	BY	DATE	APP. BY COUNCIL

CITY OF CHICO

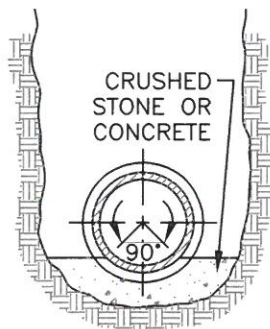
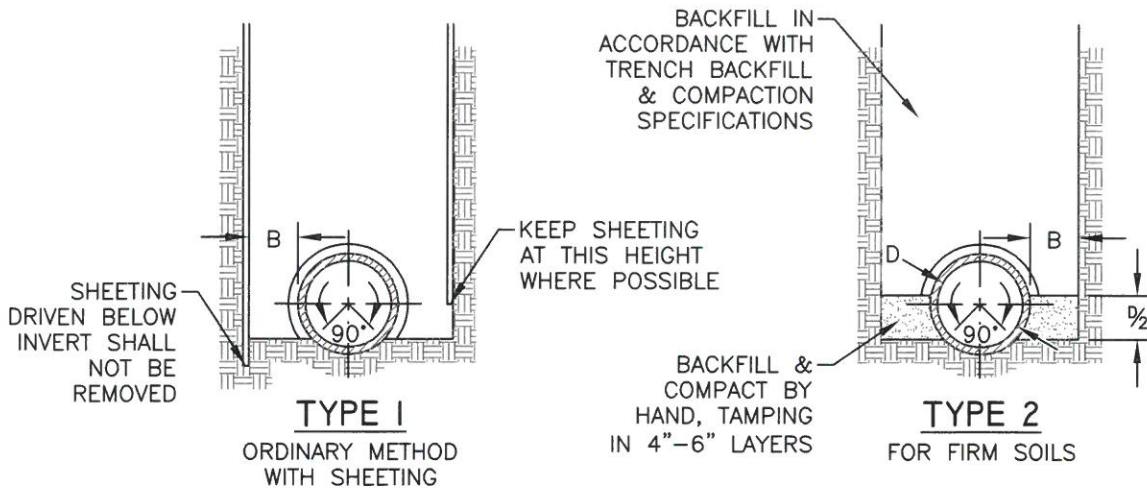
STANDARD PLAN

DRAWN BY: GL DATE: 02/2016
 CHECKED BY: BO SCALE: NONE
 APPROVED: *Paul Otter*
 PUBLIC WORKS DIRECTOR-ENGINEERING

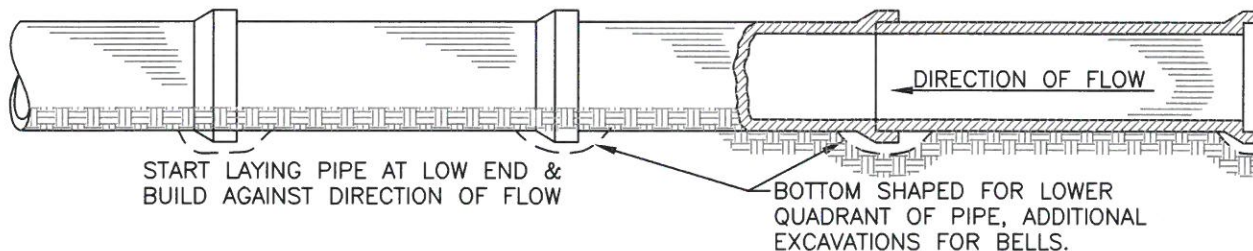
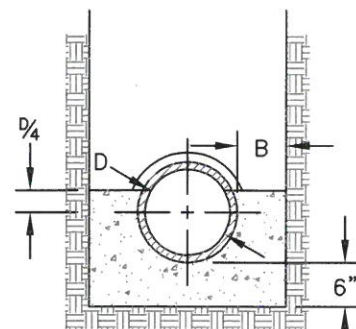
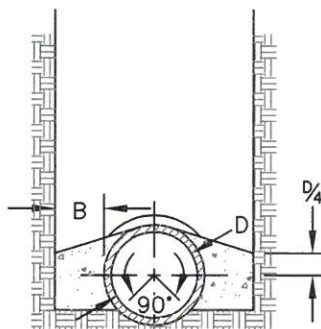
DROP MANHOLE

NO.
S-II

SHEET 1 OF 1



TYPE 3A
CONCRETE FOR ROCK TRENCH BOTTOM



REVISION	BY	DATE	APP. BY COUNCIL

CITY OF CHICO

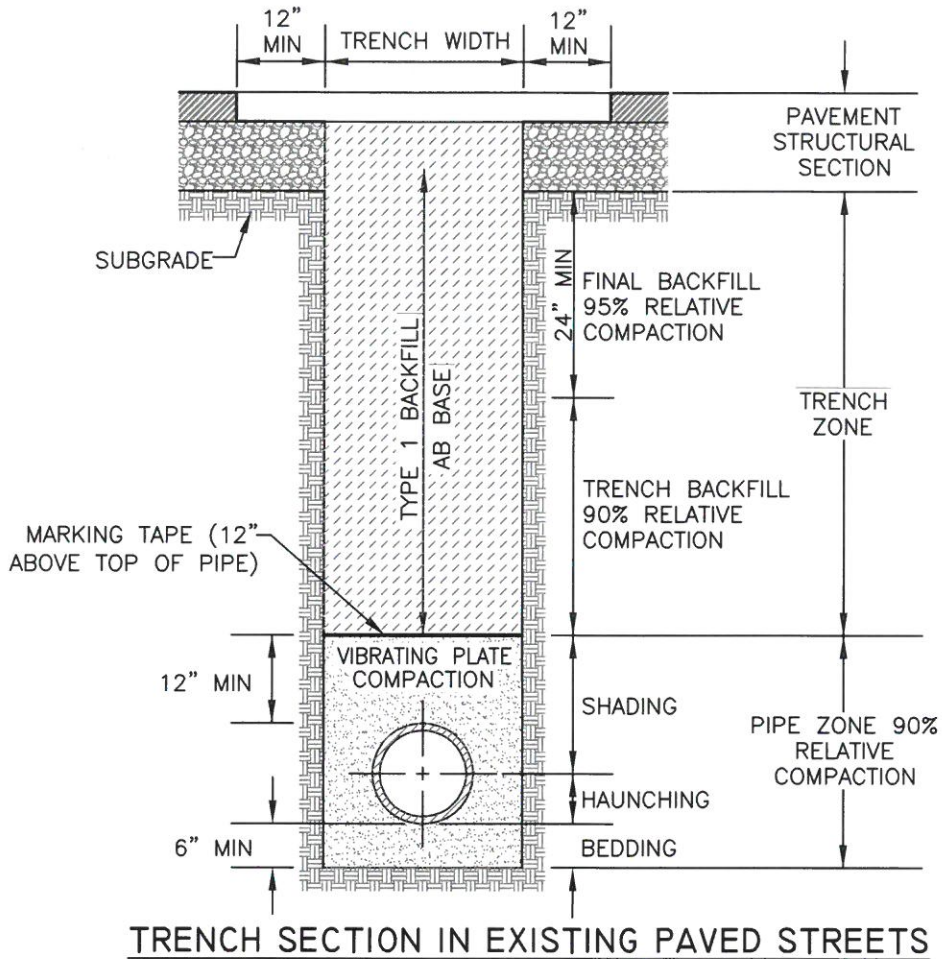
STANDARD PLAN

DRAWN BY: GL DATE: 02/2016
 CHECKED BY: BO SCALE: NONE
 APPROVED: Paul Otter
 PUBLIC WORKS DIRECTOR-ENGINEERING

APPROVED METHODS OF LAYING PIPE

NO. **S-12**

SHEET 1 OF 4



NOTES:

1. TRENCH WIDTH, PIPE BEDDING, AND BACKFILL SHALL CONFORM TO THE APPLICABLE REQUIREMENTS AND PROVISIONS OF STANDARD ____S17?
2. THESE ARE MINIMUM REQUIREMENTS. IF OTHER JURISDICTIONAL AGENCY REQUIREMENTS EXCEED THOSE SHOWN, THE GREATER REQUIREMENT SHALL BE MET.
3. 100% AB REQUIRED FOR SIDEWALK OR DRIVEWAY.

REVISION	BY	DATE	APP. BY	

CITY OF CHICO

STANDARD PLAN

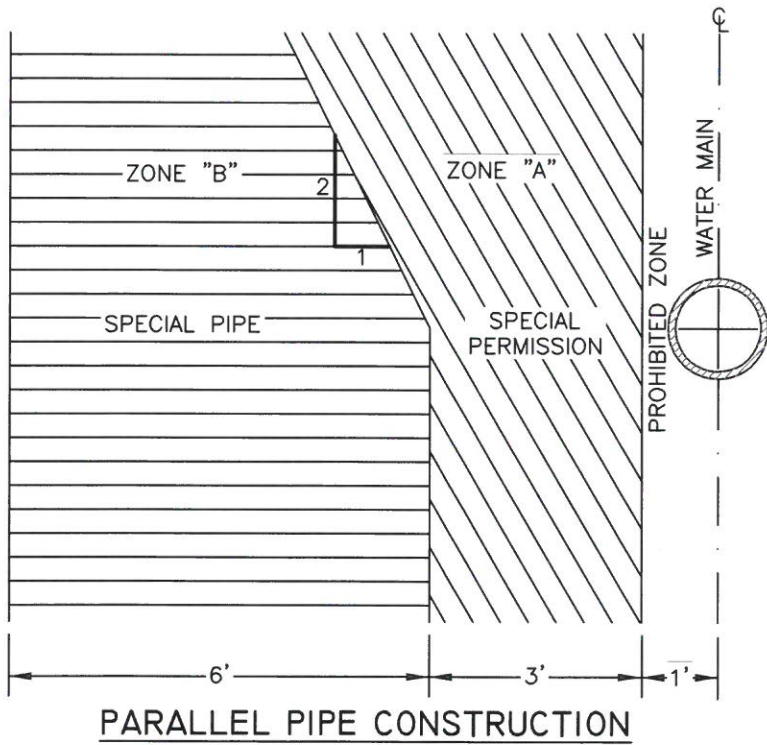
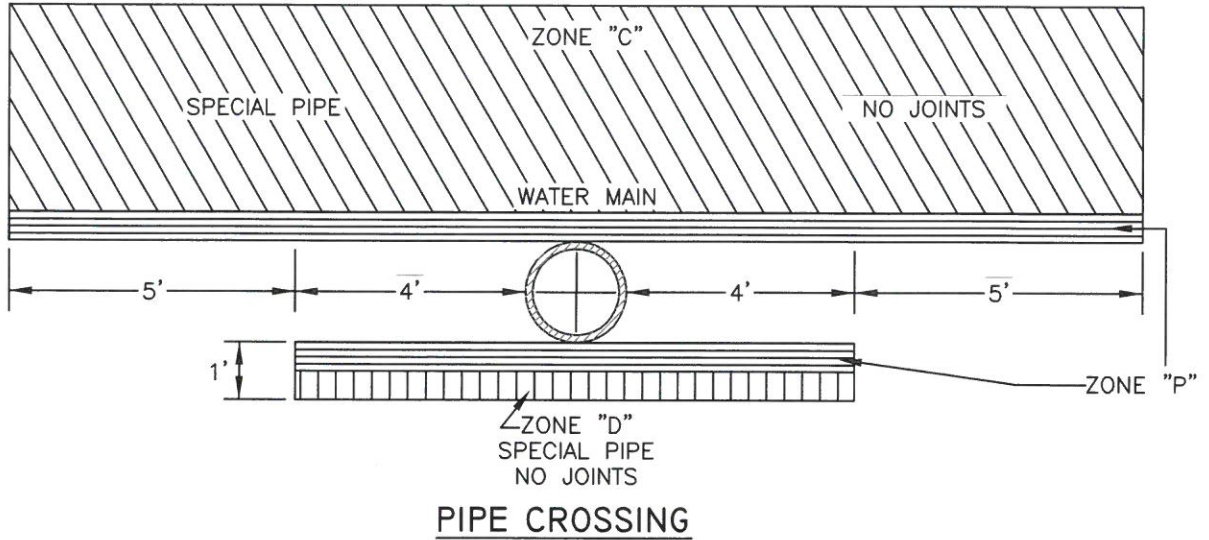
DRAWN BY: MJD DATE: 02/2016
 CHECKED BY: BO SCALE: NONE
 APPROVED: *Bruce Ott*
 PUBLIC WORKS DIRECTOR-ENGINEERING

**APPROVED METHODS
OF LAYING PIPE**

NO.
S-12

SHEET 2 OF 4

CRITERIA FOR SEPARATION OF WATER MAIN AND GRAVITY SANITARY SEWER



- ZONE "A": SEWER LINES NOT PERMITTED WITHOUT APPROVAL OF WATER AGENCY
- ZONE "B": PERMITTED MATERIALS
 - VC PIPE WITH COMPRESSION JOINTS
 - PVC PIPE WITH RUBBER RING JOINTS (ASTM 3034)
 - CI OR DI PIPE WITH COMP. JOINTS
 - RC PRESSURE PIPE WITH COMP. JOINTS
- ZONE "C": PERMITTED MATERIALS
 - DI PIPE WITH HOT DIP BITUMINOUS COATING AND MECHANICAL JOINTS
 - C-900 PVC (DR-14) CONTINUOUS SECTION CENTERED OVER PIPE BEING CROSSED
 - RC PRESSURE PIPE CONTINUOUS SECTION CENTERED OVER PIPE BEING CROSSED
 - ANY ACCEPTED SEWER PIPE WITHIN A SLEEVE
- ZONE "P": NOT PERMITTED

NOTE:
 CALIFORNIA DEPARTMENT OF HEALTH SERVICES GUIDANCE MEMO NO. 2003-02 REMAINS SOVEREIGN OVER THIS DETAIL.

REVISION	BY	DATE	APP. BY COUNCIL

CITY OF CHICO

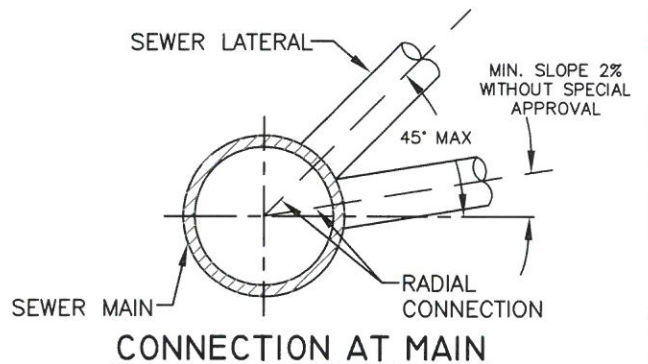
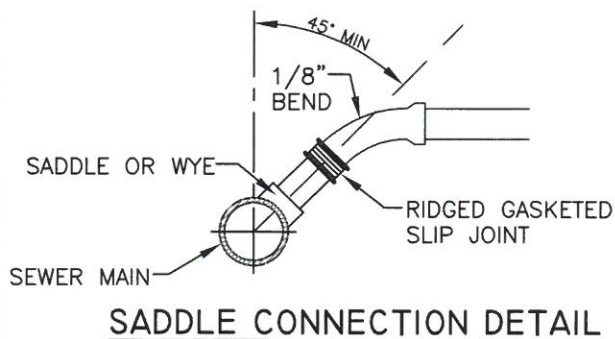
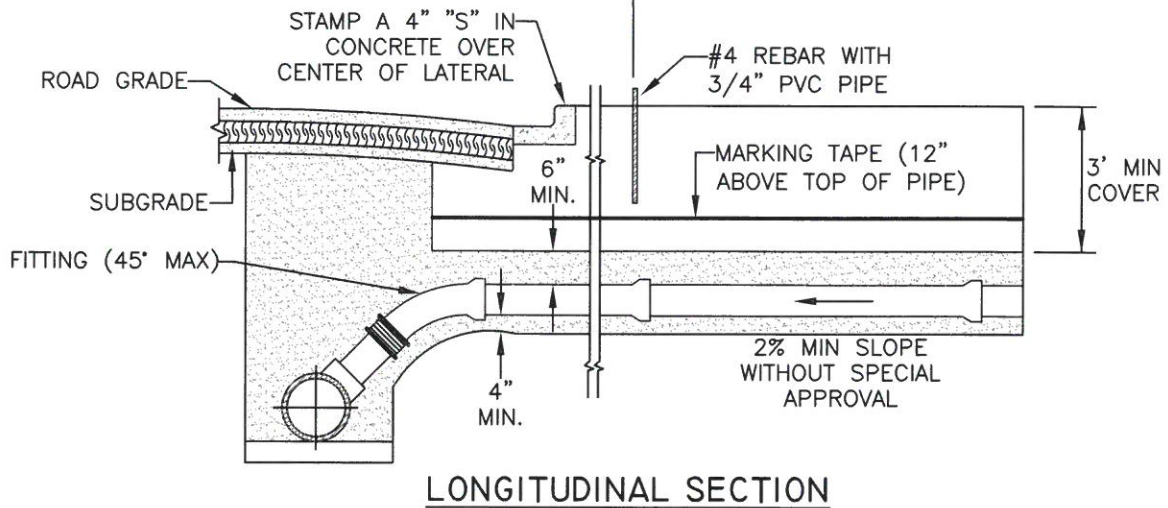
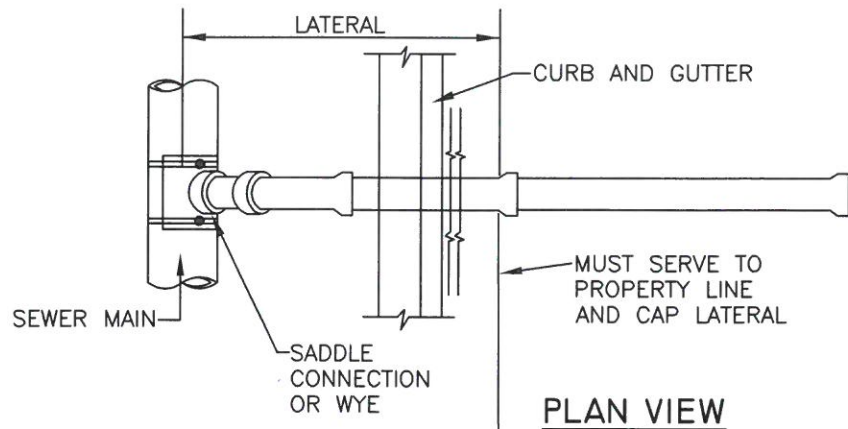
STANDARD PLAN

DRAWN BY: MJD DATE: 02/2016
 CHECKED BY: BO SCALE: NONE
 APPROVED: *Be Ott*
 PUBLIC WORKS DIRECTOR-ENGINEERING

**APPROVED METHODS
 OF LAYING PIPE**

NO.
S-12

SHEET 3 OF 4



REVISION	BY	DATE	APP. BY COUNCIL

CITY OF CHICO

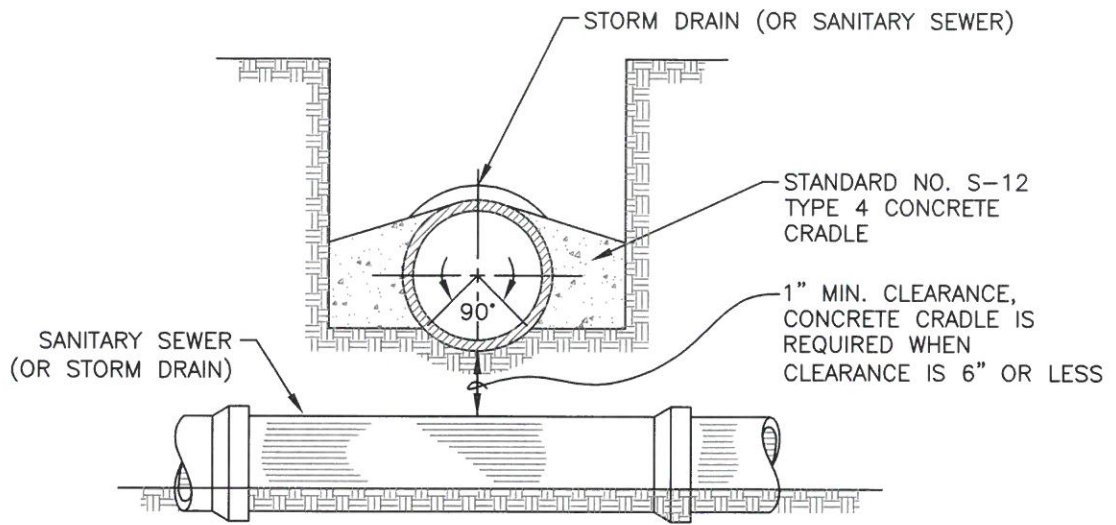
STANDARD PLAN

DRAWN BY: MJD DATE: 02/2016
 CHECKED BY: BO SCALE: NONE
 APPROVED: *Paul Otto*
 PUBLIC WORKS DIRECTOR-ENGINEERING

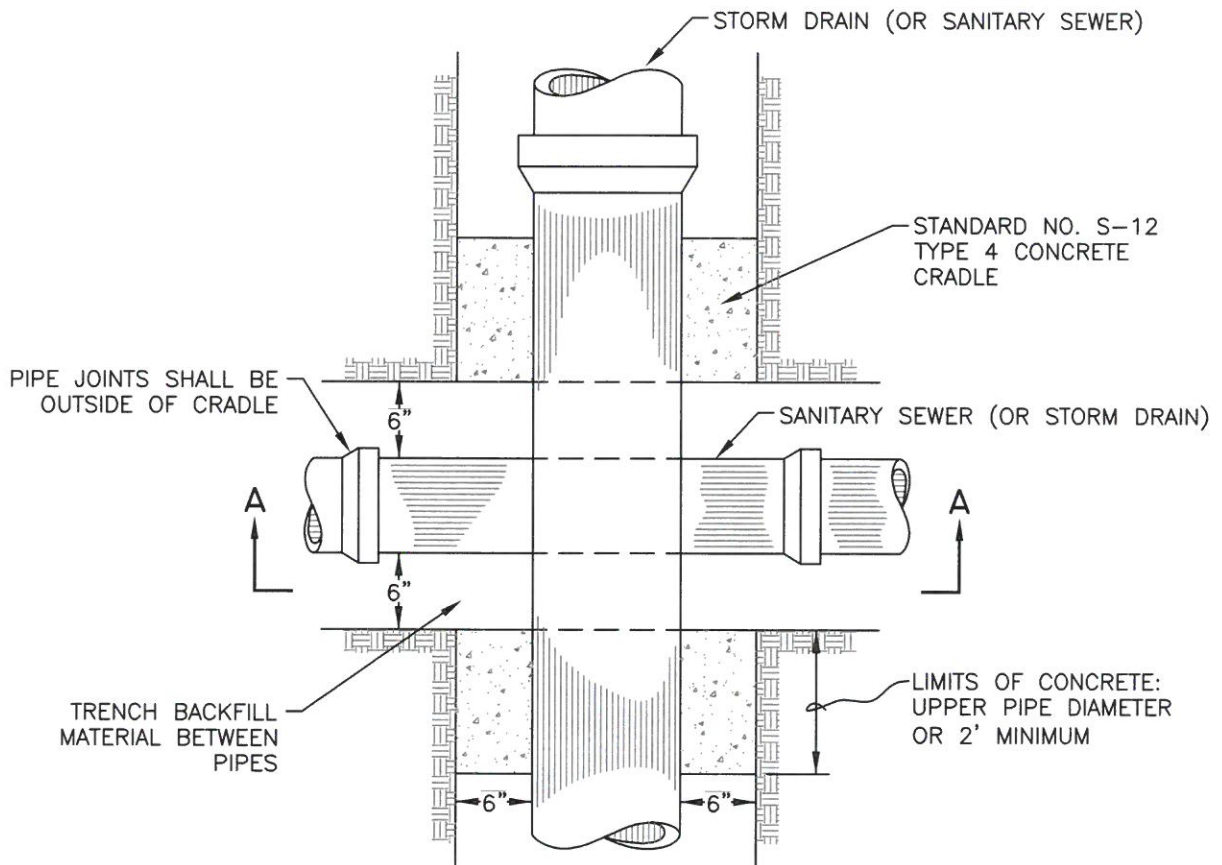
**APPROVED METHODS
OF LAYING PIPE**

NO.
S-12

SHEET 4 OF 4



SECTION A-A



PLAN VIEW

REVISION	BY	DATE	APP. BY COUNCIL

CITY OF CHICO

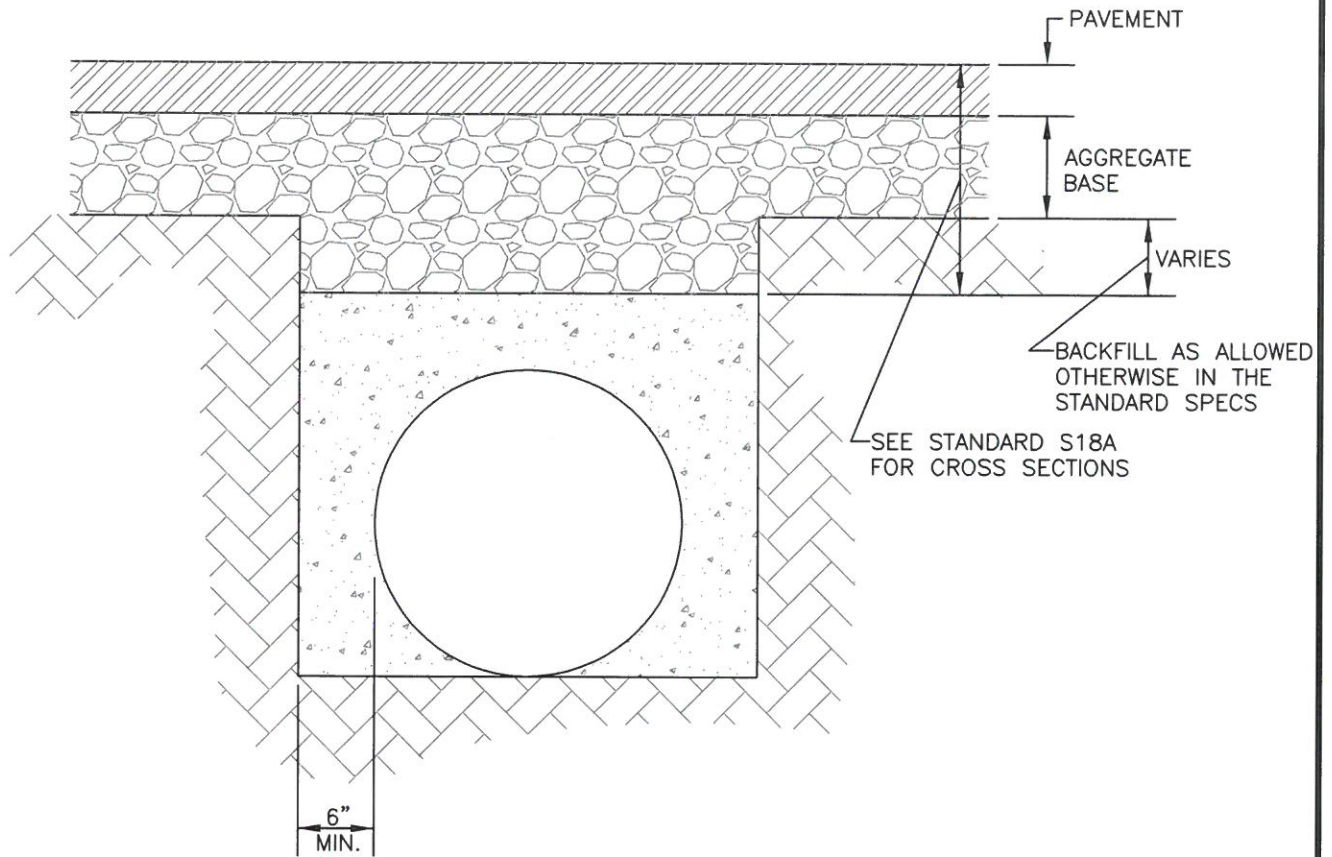
STANDARD PLAN

DRAWN BY: GL DATE: 02/2016
 CHECKED BY: BO SCALE: NONE
 APPROVED: *Byrd Otter*
 PUBLIC WORKS DIRECTOR-ENGINEERING

PIPE CROSSING CRADLE

NO.
S-12A

SHEET 1 OF 1



NOTES:

1. THIS DETAIL IS TO BE USED WHERE THERE WILL BE LESS THAN TWO FEET OF COVER BETWEEN THE TOP OF PLASTIC PIPES AND THE FINAL GRADE
2. PRIOR APPROVAL OF THE DIRECTOR OF ENGINEERING IS REQUIRED
3. THE CRADLE MUST BE INSTALLED THE FULL DISTANCE BETWEEN STRUCTURES

REVISION	BY	DATE	APP. BY COUNCIL

CITY OF CHICO

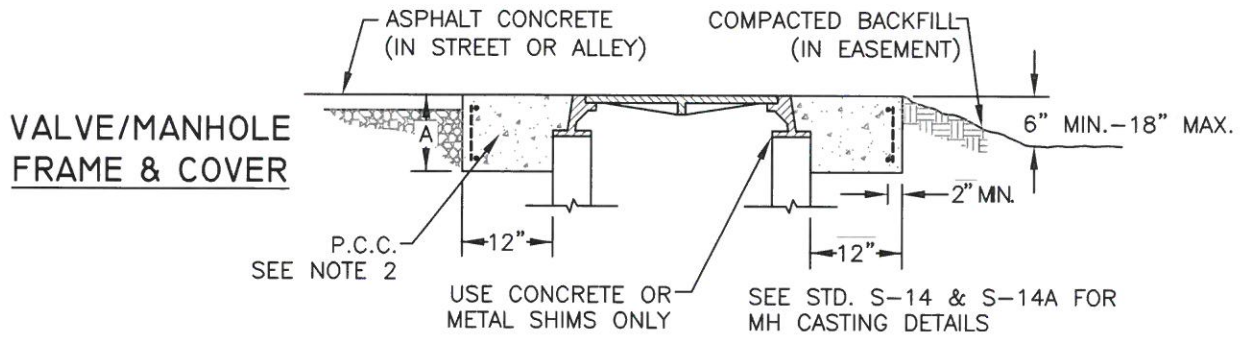
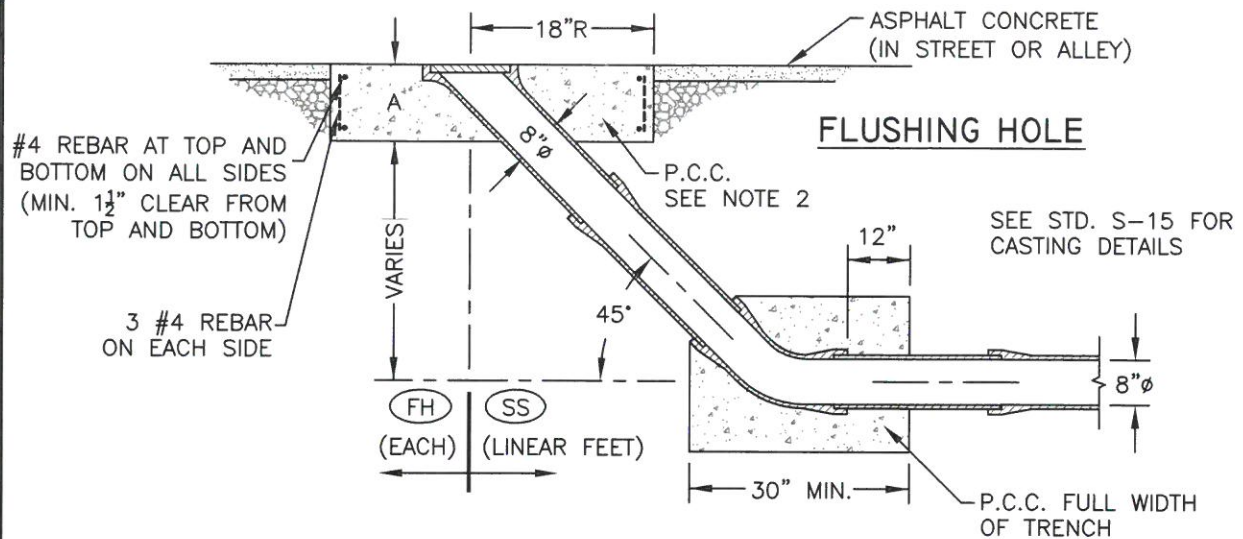
STANDARD PLAN

DRAWN BY: MT DATE: 02/2016
 CHECKED BY: BO SCALE: NONE
 APPROVED: *[Signature]*
 PUBLIC WORKS DIRECTOR-ENGINEERING

**MODIFIED CONCRETE
CRADLE**

NO.
S-12M

SHEET 1 OF 1



NOTES:

1. JOINTS TO BE CONSTRUCTED AS REQUIRED BY STANDARD SPECS. FOR SEWER LINE.
2. IF IN STREET OR ALLEY USE CLASS "A" CONCRETE W/ 5 POUNDS OF LAMP BLACK PER CUBIC YARD.
3. FOR APPURTENANCES LOCATED IN EASEMENT: FINISHED GRADE FROM EDGE OF CONCRETE SHALL SLOPE DOWN NO LESS THAN 6" AND NO MORE THAN 18", MEASURED FROM THE TOP OF CONCRETE SURFACE.

- A=
- 18" ON ARTERIAL AND COMMERCIAL STREETS
 - 12" ON COLLECTOR AND COMM STREETS
 - 8" ON LOCAL AND RESIDENTIAL STREETS

(SS) = QUANTITY PAYMENT LIMITS FOR CITY CONTRACTS

REVISION	BY	DATE	APP. BY COUNCIL

CITY OF CHICO

STANDARD PLAN

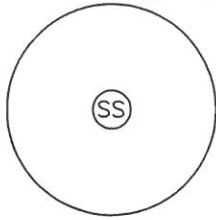
DRAWN BY: GL DATE: 02/2016
 CHECKED BY: BO SCALE: NONE
 APPROVED: [Signature]
 PUBLIC WORKS DIRECTOR-ENGINEERING

**TYPICAL METHOD FOR
SETTING APPURTENANCES**

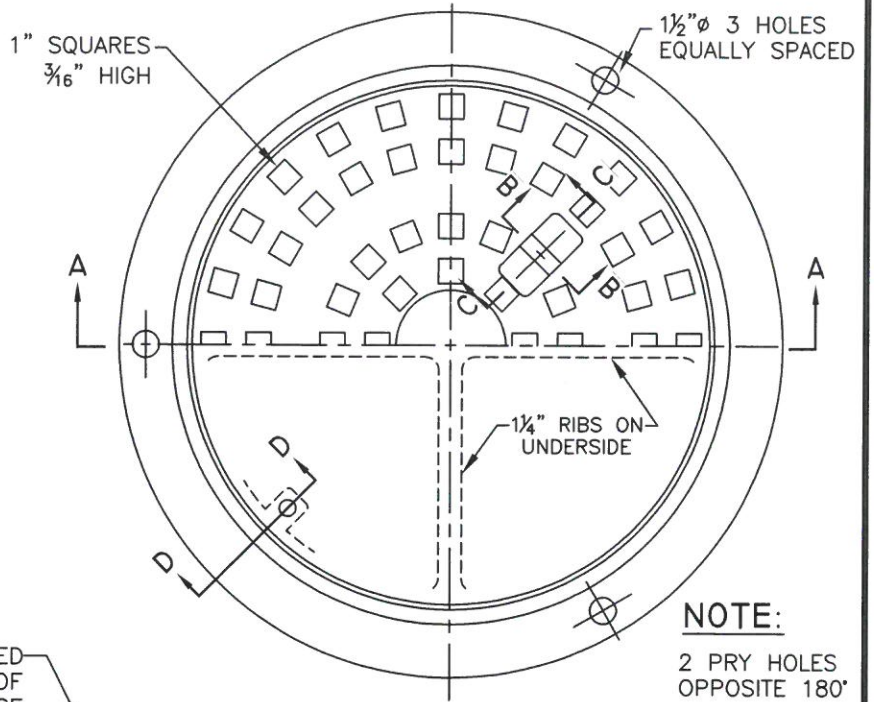
NO. **S-13**
 SHEET 1 OF 1

**STD. 24" FRAME
& COVER**

SOUTH BAY FOUNDRY NO.
SBF-624BD OR
APPROVED EQUAL
APPROX. WT. 294 LBS.

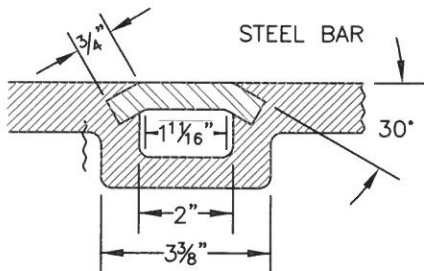


LETTERING REQUIRED
ON ALL M.H. COVERS:
SS=SANITARY SEWER
SD=STORM DRAIN

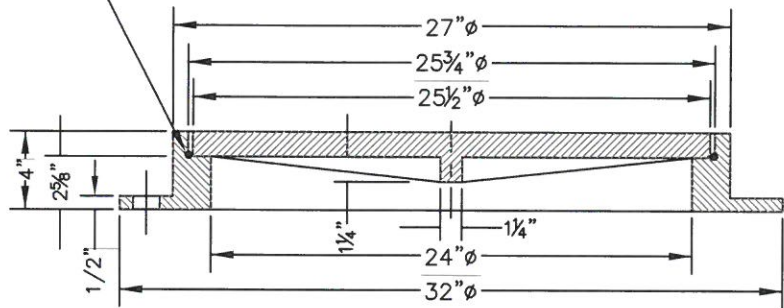


NOTE:
2 PRY HOLES
OPPOSITE 180°

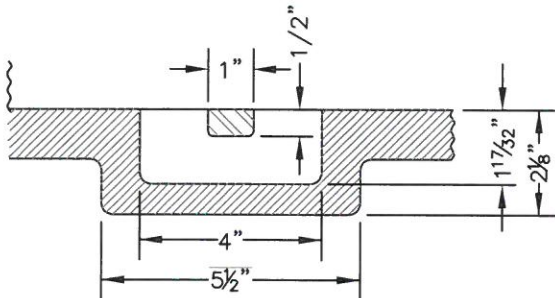
1/4" NEOPRENE N-439 O-RING SECURED
WITH ADHESIVE. MATING SURFACES OF
FRAME & COVER ARE MACHINED. GREASE
O-RING LIGHTLY ON FINAL ASSEMBLY.



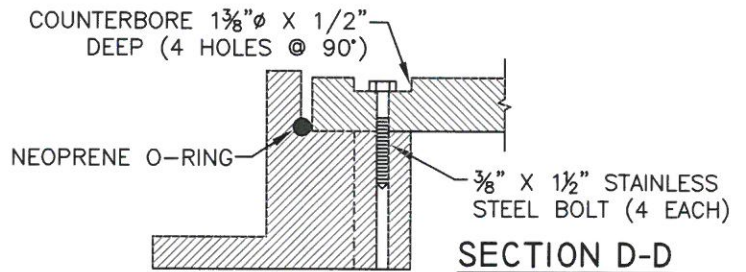
SECTION B-B



SECTION A-A



SECTION C-C



SECTION D-D

NOTES:

1. SEE STD. S-10 & S-13 FOR METHOD OF SETTING FRAME.
2. UPON REQUEST, ENGINEER MAY APPROVE THE USE OF NON-BOLT DOWN MANHOLE FRAME AND COVERS ON LOCAL AND RESIDENTIAL STREETS AND CUL-DE-SACS.

REVISION	BY	DATE	APP. BY COUNCIL

CITY OF CHICO

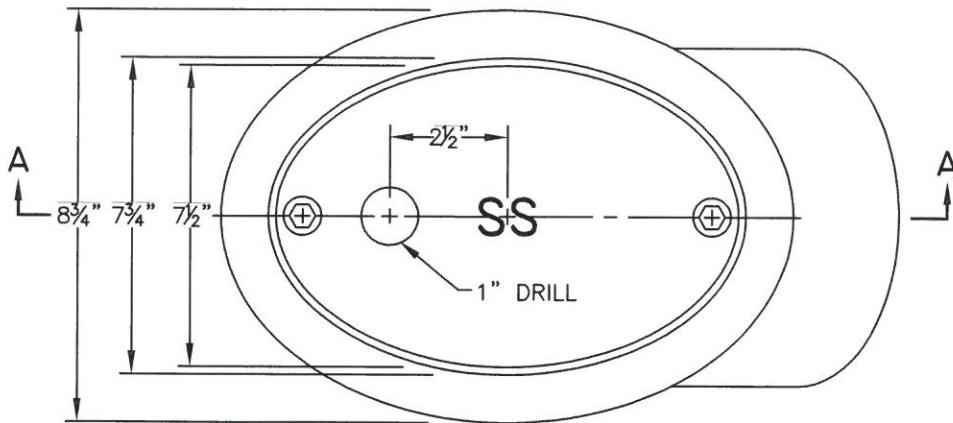
STANDARD PLAN

DRAWN BY: GL DATE: 02/2016
 CHECKED BY: BO SCALE: NONE
 APPROVED: Bole Otter
 PUBLIC WORKS DIRECTOR-ENGINEERING

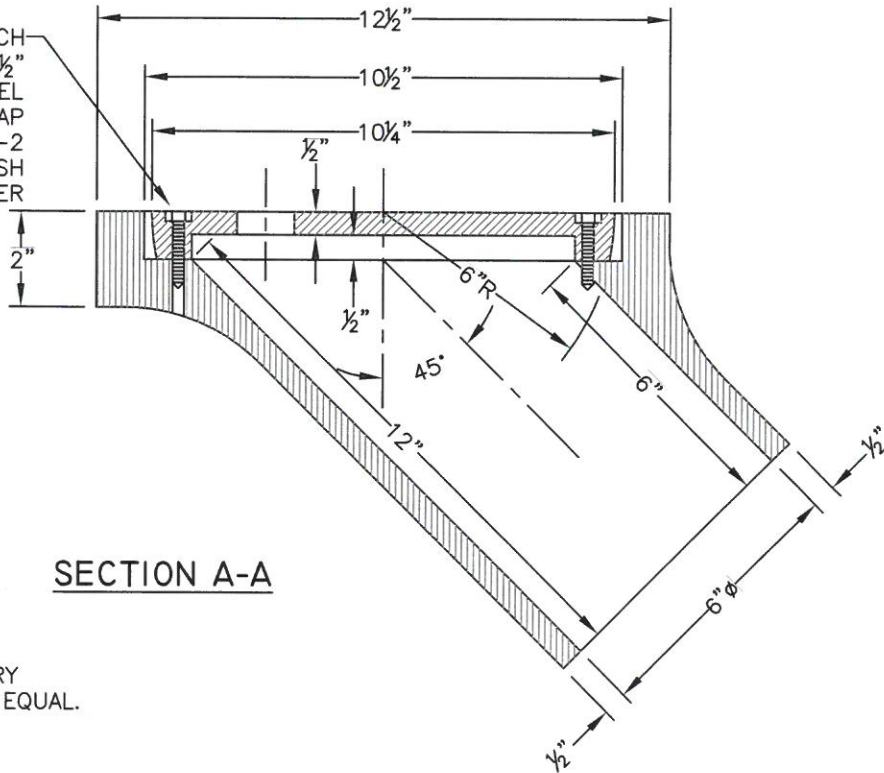
**BOLT DOWN MANHOLE
FRAME & COVER DETAILS**

NO.
S-14

SHEET 1 OF 1



INSTALL 2 EACH
1/4"X1 1/2"
STAINLESS STEEL
HEX. HD. CAP
SCREW-20 NC-2
RECESSED FLUSH
WITH COVER



SECTION A-A

SOUTH BAY FOUNDRY
NO. SBF-1247 OR EQUAL.

NOTES:

1. SEE STD. S-13 FOR METHOD OF INSTALLATION & RISER CONSTRUCTION.
2. USE 8"Ø CASTING FOR TERMINUS OF 8" SEWER MAIN.

REVISION	BY	DATE	APP. BY COUNCIL

CITY OF CHICO

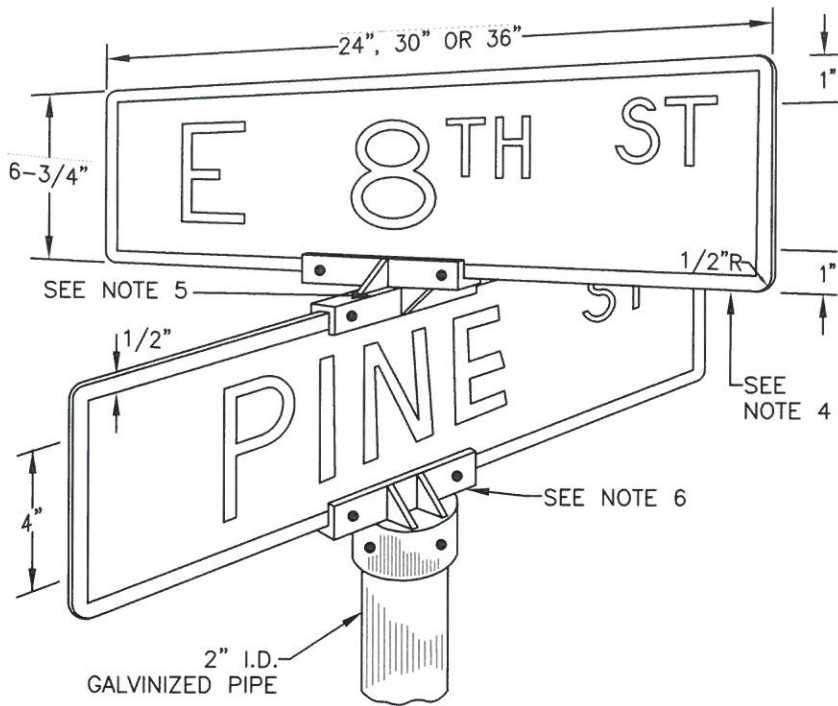
STANDARD PLAN

DRAWN BY: GL DATE: 02/2016
 CHECKED BY: BO SCALE: NONE
 APPROVED: [Signature]
 PUBLIC WORKS DIRECTOR-ENGINEERING

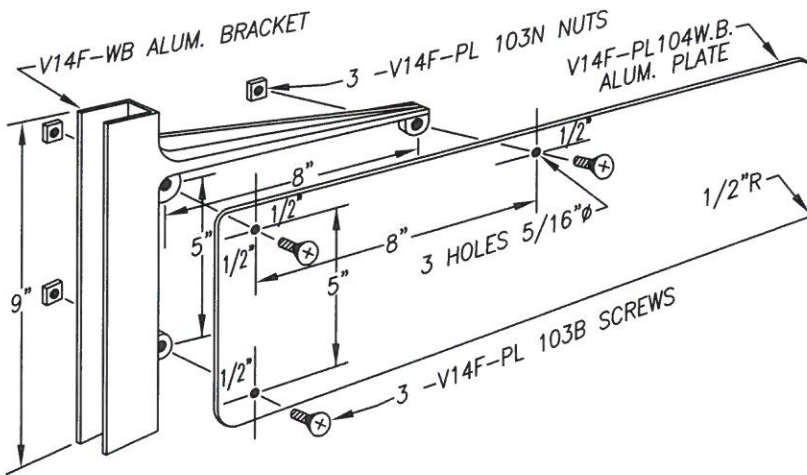
**FLUSHING HOLE
CAST IRON FRAME & COVER**

NO.
S-15

SHEET 1 OF 1



**POST ASSEMBLY
DETAIL**



**WING BRACKET
DETAIL**

NOTES:

1. LETTERING TO BE STD. HWY. SIGN ALPHABET, U.S. PUBLIC ROAD ADMIN. CUT FROM SCOTCHLITE ELECTROCUT TRANSLUCENT FILM (E.C.FILM), SERIES 1170, GREEN OR BLUE, WITH 1/2-INCH WHITE BORDER AND WHITE LETTERING.

2. STREET NAMES SHALL START WITH A 4-INCH HIGH CAPITAL LETTER AND SERIES B, C, D OR E FOLLOWED BY 2-INCH HIGH LOWERCASE LETTERS. 2-INCH HIGH SUPERSCRIPT LETTERS TO FOLLOW NUMBERED STREETS (1ST, 2ND, ETC.). EACH NAME SHALL BE INDIVIDUALLY LAID OUT AND SPACED TO FIT 24, 30 OR 36-INCH PLATES. USE LETTER SERIES NECESSARY TO FIT WITHIN 36-INCHES, USING THE LARGEST LETTERS POSSIBLE FOR BALANCED LAYOUT.

3. ALL CATALOGUE NUMBERS ARE HAWKINS & HAWKINS, 1255 EASTSHORE HIGHWAY, BERKELEY, CALIFORNIA 94710.

4. ALUMINUM PLATE SHALL BE .125" THICK 5052 H38 ALLOY WITH ENG. GRADE REFLECTIVE WHITE 2290 SCOTCHLITE ON BOTH SIDES, OR APPROVED EQUAL.

5. USE ALUMINUM CROSSPIECES LISTED BELOW, OR APPROVED EQUAL, WITH .125" SLOTS:
 90°=V14F(HD)SL-105(90)
 45° RIGHT=V14F(HD)SL-105(45R)
 45° LEFT=V14F(HD)SL-105(45L)

6. ALUMINUM POST CAP TO FIT 2" PIPE SHALL BE V14F(HD)SL-107-2C WITH .125" SLOT, OR APPROVED EQUAL.

7. FOR ROADS WITH A SPEED LIMIT OF 45 MPH OR HIGHER, INCREASE HEIGHT OF SIGN TO 8" WITH 6" CAPITAL AND 3" LOWER CASE LETTERING ON A 2" SQUARE GALVANIZED POLE.

REVISION	BY	DATE	APP. BY COUNCIL

CITY OF CHICO

STANDARD PLAN

DRAWN BY: GL DATE: 02/2016

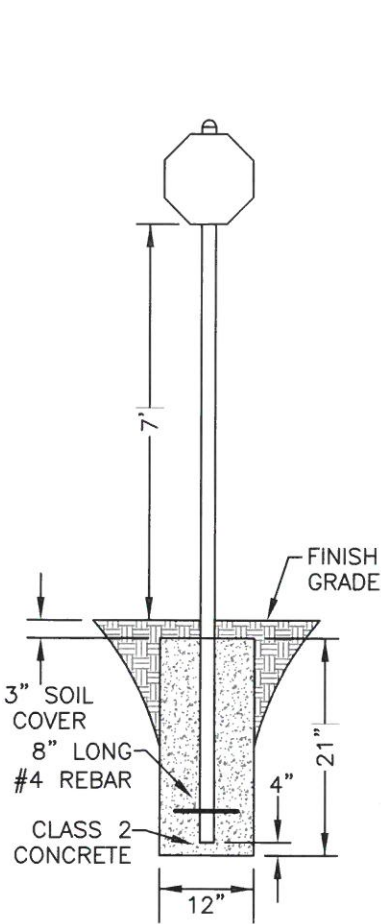
CHECKED BY: BO SCALE: NONE

APPROVED: Blue Otter
 PUBLIC WORKS DIRECTOR-ENGINEERING

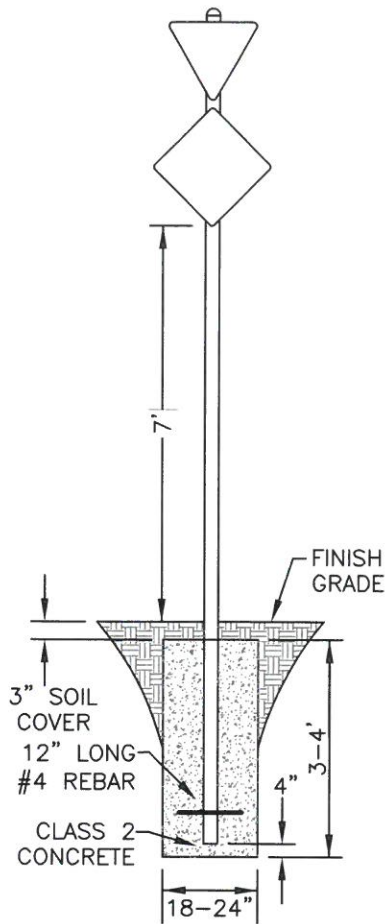
STREET NAME SIGN DETAILS

NO.
S-16

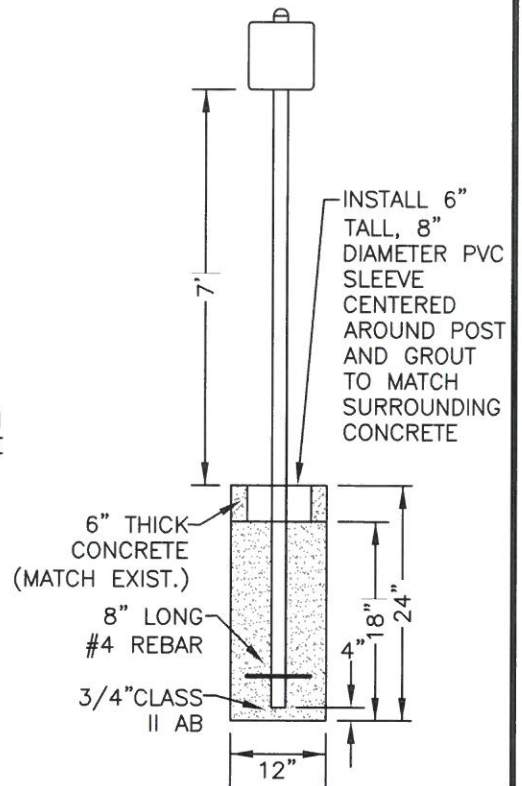
SHEET 1 OF 3



**SINGLE SIGN
DETAIL**

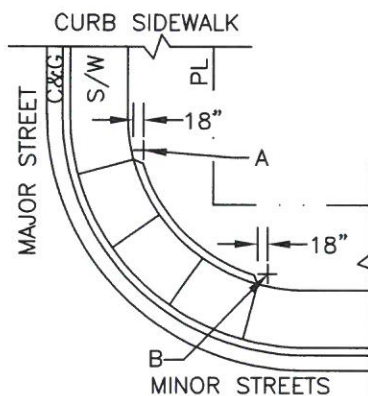
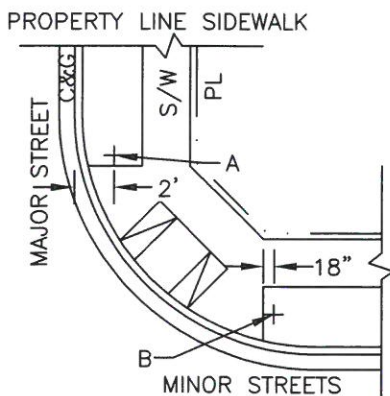


**MULTIPLE SIGN
DETAIL**



**SIDEWALK OR
MEDIAN
DETAIL**

REVISION	BY	DATE	APP. BY



LOCATION DETAILS

NOTES:

1. A=LOCATION WHERE CURB RADIUS IS 30' OF GREATER, OR WHERE SPEED LIMIT ON MAJOR STREET IS 35 MPH OR MORE.
B=LOCATION WHERE CURB RADIUS IS 27' OR LESS AND WHERE SPEED LIMIT IS LESS THAN 35 MPH.
2. GENERALLY, SIGNS ARE TO BE INSTALLED ON THE NEAR LEFT AND FAR RIGHT INTERSECTION CORNERS ON MAJOR STREETS
3. THE ENGINEER IS TO DETERMINE THE SIZE OF THE POST HOLE FOR MULTIPLE SIGN POSTS BASED ON THE LOAD.
4. 18" MINIMUM CLEARANCE REQUIRED BETWEEN TRAVEL WAY AND EDGE OF SIGN PROJECTION.
5. ALL POLE INSTALLATIONS TO BE INSPECTED PRIOR TO BACKFILL.

CITY OF CHICO

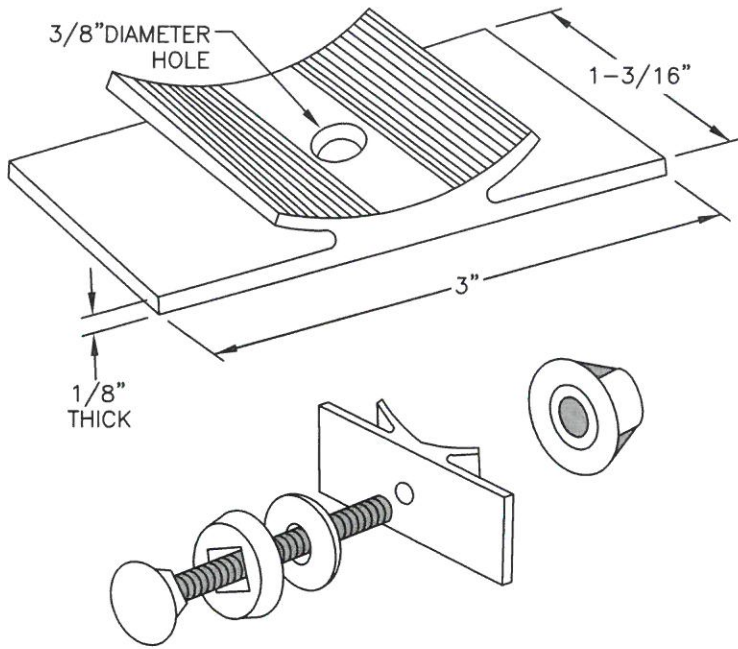
STANDARD PLAN

DRAWN BY: MJD DATE: 02/2016
 CHECKED BY: BO SCALE: NONE
 APPROVED: *Burl Otter*
 PUBLIC WORKS DIRECTOR-ENGINEERING

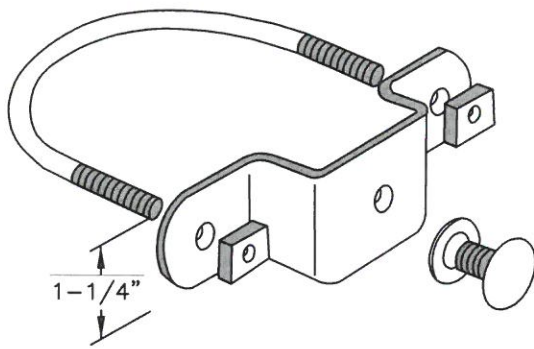
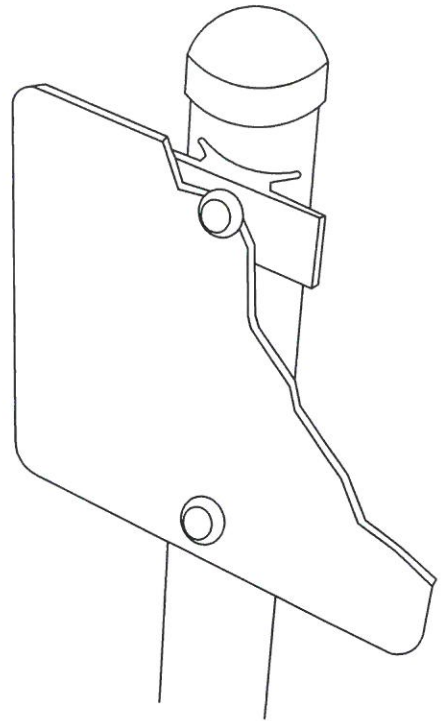
**STREET POST INSTALLATION
DETAILS**

NO.
S-16

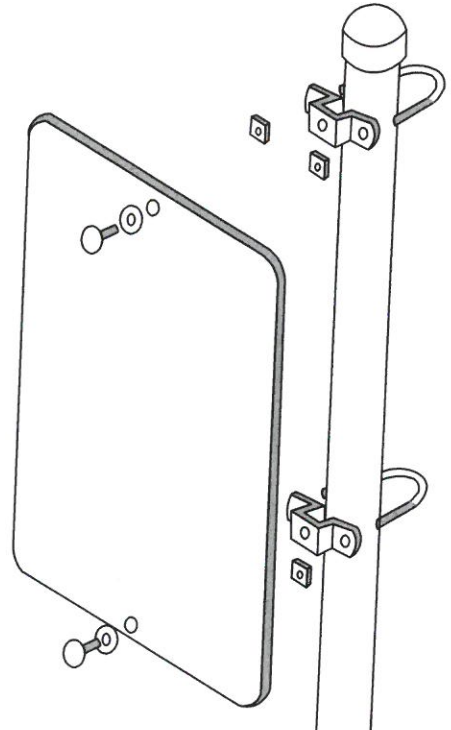
SHEET 2 OF 3



**SIGN SADDLE
DETAIL**



**SINGLE CLAMP ON
U-BRACKET DETAIL**



NOTES:

FOR SIGN SADDLE USE HAWKINS TRAFFIC M2G-312-SSTP, OR APPROVED EQUAL.
FOR SINGLE CLAMP ON U-BRACKETS USE HAWKINS TRAFFIC M2G-C2B, OR APPROVED EQUAL.

REVISION	BY	DATE	APP. BY COUNCIL

CITY OF CHICO

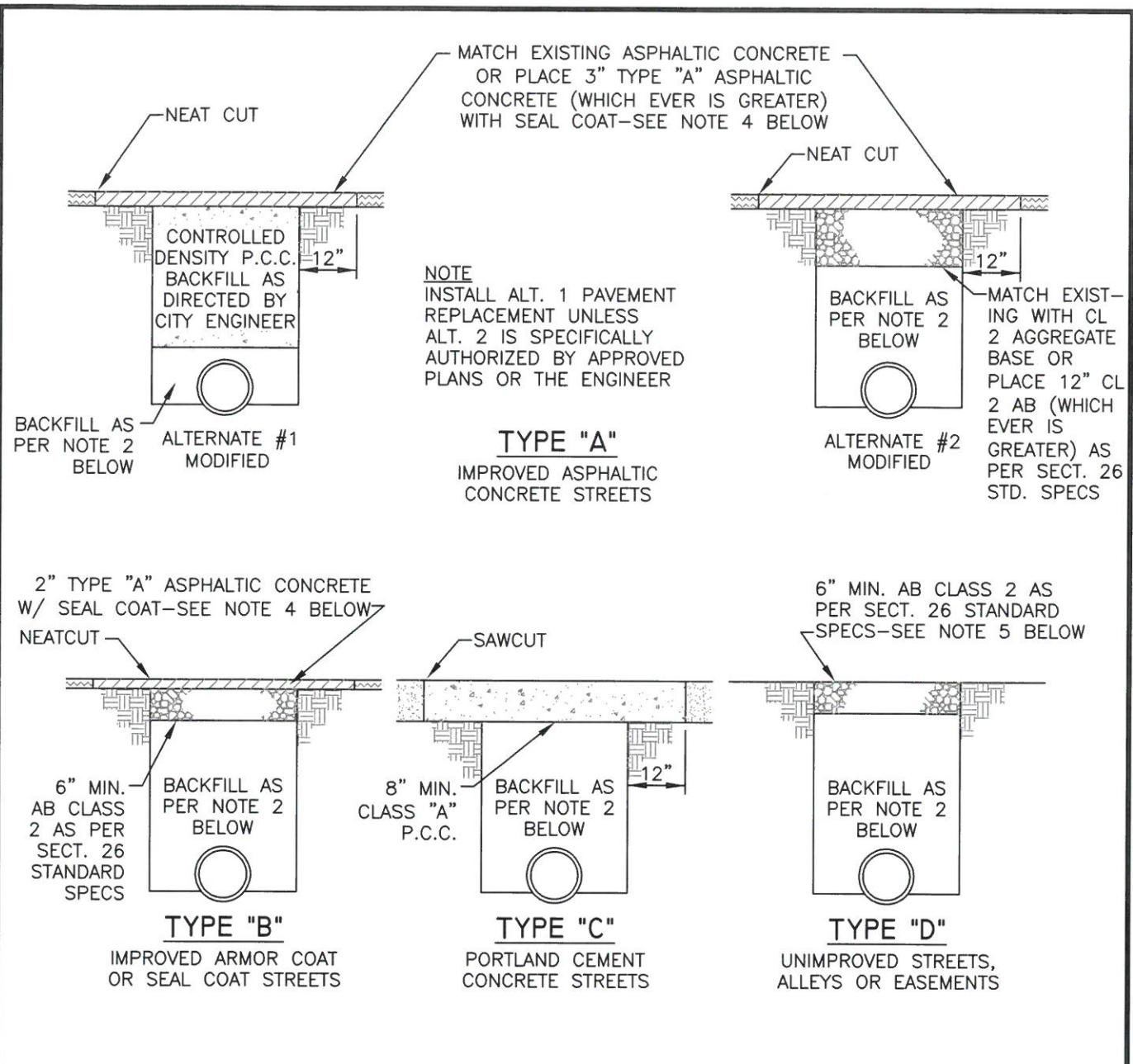
STANDARD PLAN

DRAWN BY: MJD DATE: 02/2016
 CHECKED BY: BO SCALE: NONE
 APPROVED: *Byrd Otter*
 PUBLIC WORKS DIRECTOR-ENGINEERING

**STREET SIGN MOUNTING
DETAILS**

NO.
S-16

SHEET 3 OF 3



NOTE
 INSTALL ALT. 1 PAVEMENT REPLACEMENT UNLESS ALT. 2 IS SPECIFICALLY AUTHORIZED BY APPROVED PLANS OR THE ENGINEER

TYPE "A"
 IMPROVED ASPHALTIC CONCRETE STREETS

2" TYPE "A" ASPHALTIC CONCRETE W/ SEAL COAT—SEE NOTE 4 BELOW
 NEATCUT
 6" MIN. AB CLASS 2 AS PER SECT. 26 STANDARD SPECS
TYPE "B"
 IMPROVED ARMOR COAT OR SEAL COAT STREETS

SAWCUT
 8" MIN. CLASS "A" P.C.C.
TYPE "C"
 PORTLAND CEMENT CONCRETE STREETS

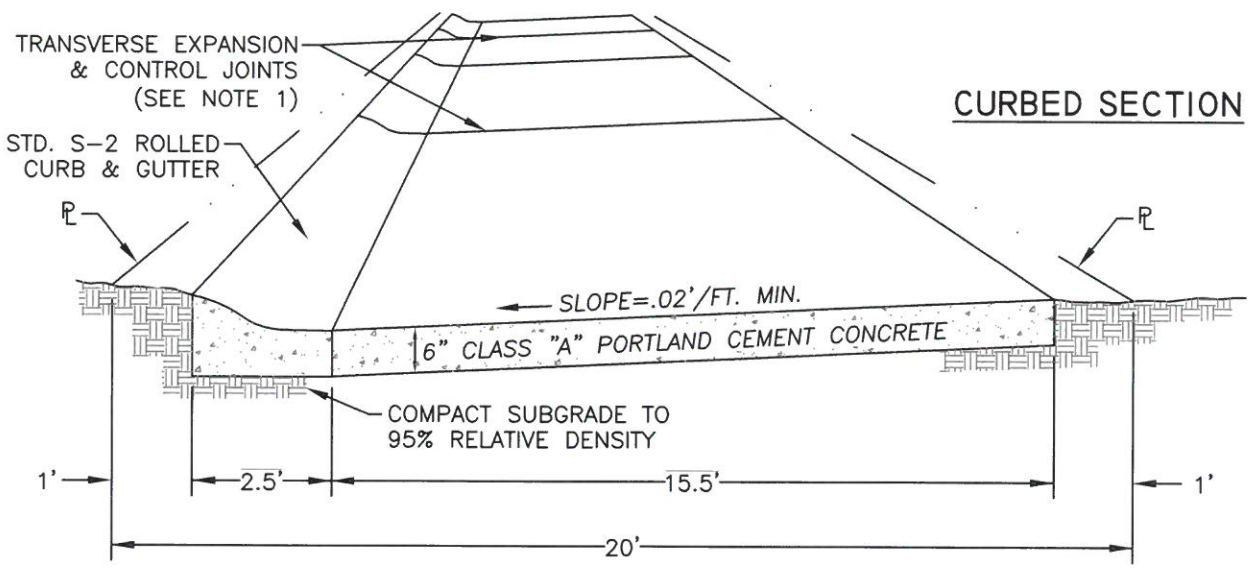
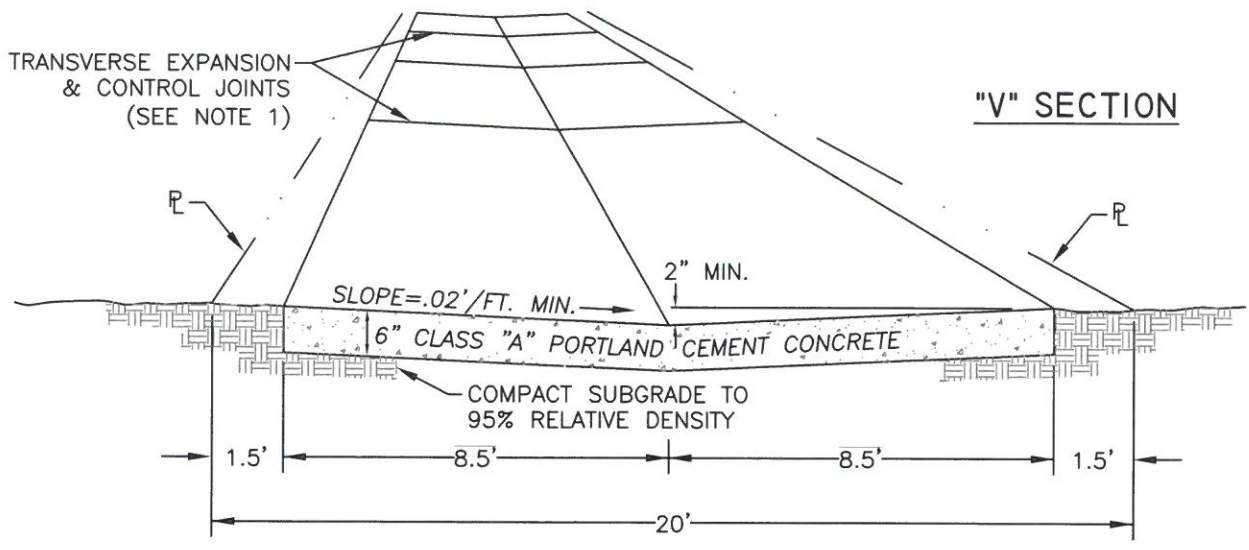
6" MIN. AB CLASS 2 AS PER SECT. 26 STANDARD SPECS—SEE NOTE 5 BELOW
TYPE "D"
 UNIMPROVED STREETS, ALLEYS OR EASEMENTS

NOTES:

1. ALL WORK SHOWN ABOVE SHALL CONFORM TO THE APPLICABLE SECTIONS OF THE STANDARD SPECIFICATIONS.
2. ALL EXCAVATIONS WITHIN PUBLIC RIGHT-OF-WAY SHALL BE BACKFILLED IN ACCORDANCE WITH SECTION ENTITLED "TRENCH BACKFILL" CITY OF CHICO STANDARD SPECIFICATIONS OR SEC. 19-3 OF THE STANDARD SPECIFICATIONS.
3. AREA ADJACENT TO THE TRENCH SHALL BE LEFT IN A CONDITION EQUAL TO OR BETTER THAN THAT EXISTING PRIOR TO CONSTRUCTION.
4. SEAL COAT—APPLY A BITUMINOUS BINDER COVERED WITH EITHER SAND OR SCREENINGS TO MATCH EXISTING SURFACE WHEN AND AS DIRECTED BY THE ENGINEER.
5. TYPE "D"—INSTALL 6" OF CONSOLIDATED TOPSOIL IN LANDSCAPED AREAS.

REVISION	BY	DATE	APP. BY COUNCIL

CITY OF CHICO		STANDARD PLAN	
DRAWN BY: <u>GL</u>	DATE: <u>02/2016</u>	TYPICAL DETAILS OF PAVEMENT REPLACEMENT	NO. S-17
CHECKED BY: <u>BO</u>	SCALE: <u>NONE</u>		
APPROVED: <u><i>[Signature]</i></u>	PUBLIC WORKS DIRECTOR-ENGINEERING		
		SHEET 1 OF 1	



NOTES:

1. INSTALL 1/4" WIDE TRANSVERSE EXPANSION JOINTS AT 48' INTERVALS AND 1/8" TRANSVERSE SCORED CONTROL JOINTS AT 12' INTERVALS.
2. ALL EXPANSION JOINTS AND THE FINISHING OF THE CONCRETE SURFACE SHALL BE DONE IN ACCORDANCE WITH STATE OF CALIFORNIA, DEPARTMENT OF TRANSPORTATION STANDARD SPECIFICATION.
3. DIMENSIONS SHOWN ARE PRESENT MINIMUM STANDARDS. DIMENSIONS OF ALLEY RIGHTS OF WAY EXISTING PRIOR TO ADOPTION OF MINIMUM STANDARDS MAY VARY. CONSTRUCT TO THE WIDTH AND ALIGNMENT SHOWN ON THE IMPROVEMENT PLANS.
4. THE CURBED SECTION SHALL BE USED WHEN SANITARY SEWER FACILITIES ARE AT THE CENTERLINE OF THE ALLEY.

REVISION	BY	DATE	APP. BY

CITY OF CHICO

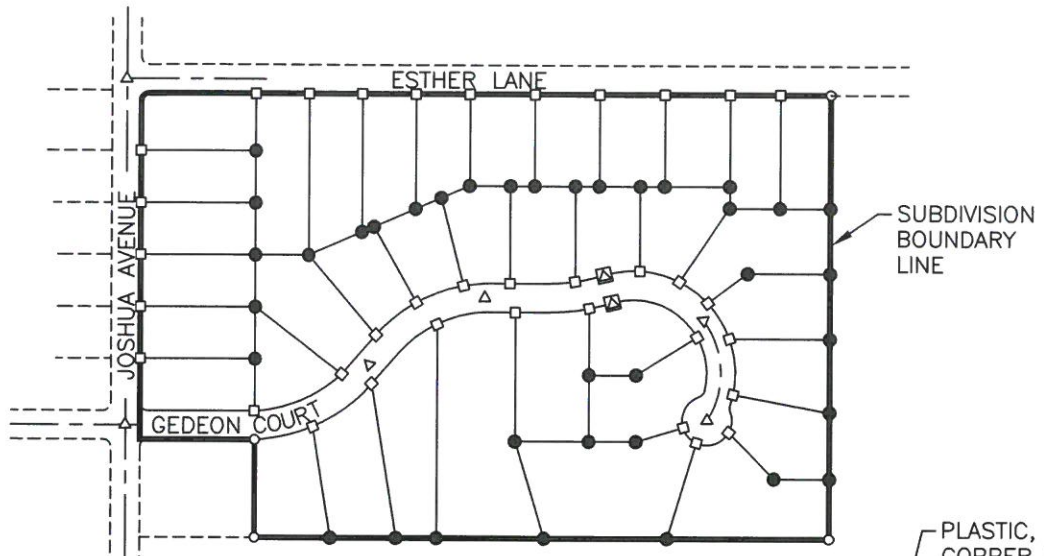
STANDARD PLAN

DRAWN BY: GL DATE: 02/2016
 CHECKED BY: BO SCALE: NONE
 APPROVED: *Barbara Ott*
 PUBLIC WORKS DIRECTOR-ENGINEERING

ALLEY PAVEMENT

NO. **S-19**

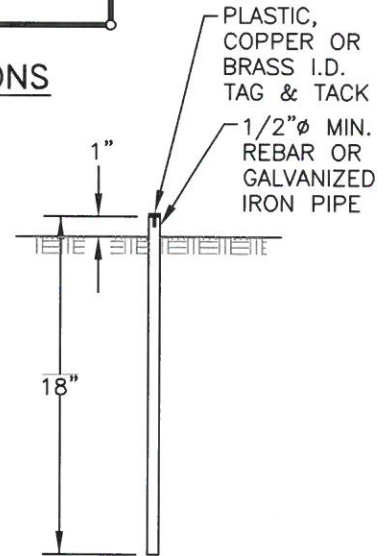
SHEET 1 OF 1



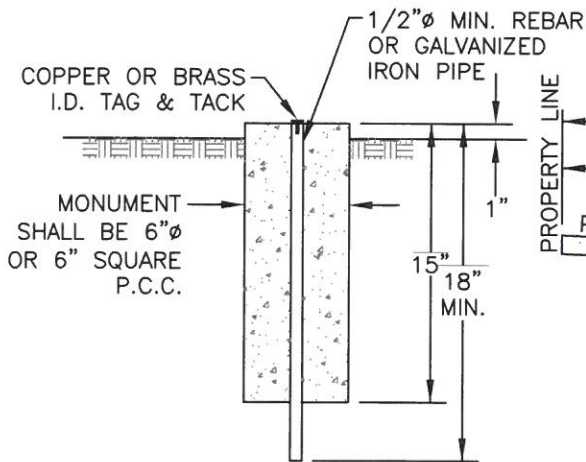
STANDARD MONUMENT LOCATIONS

LEGEND

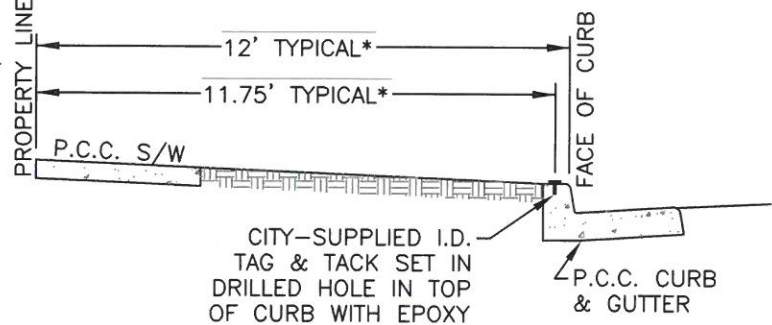
- 1/2" PIPE/REBAR MONUMENT.
- PERMANENT MONUMENT. (SUBDIVISION OR PARCEL MAP BOUNDARY CORNERS AND BOUNDARY LINE ANGLE POINTS)
- ◻ WITNESS CORNER. SET IN TOP OF CURB ON PROLONGATION OF LOT LINES. SHOW DISTANCE TO PROPERTY LINE ON RECORD OF SURVEY AND SUBDIVISION MAPS.
- △ 1 1/2" BRASS CAP MONUMENT W/18" X 1/2" SHAFT. SET AT INTERSECTIONS AND AT INTERVALS NOT TO EXCEED 500'. SET POINTS SHALL BE INTERVISABLE.
- ◻ WITNESS MONUMENT. SET IF CENTERLINE MONUMENT CANNOT BE SET.



PIPE/REBAR MONUMENT



PERMANENT MONUMENT



WITNESS CORNER

*NOTE: SEE STD. S-18A FOR PARKWAY WIDTH

REVISION	BY	DATE	APP. BY COUNCIL

CITY OF CHICO

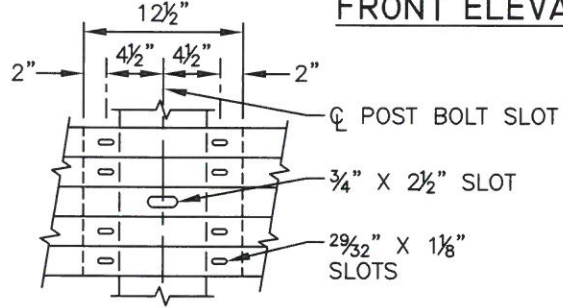
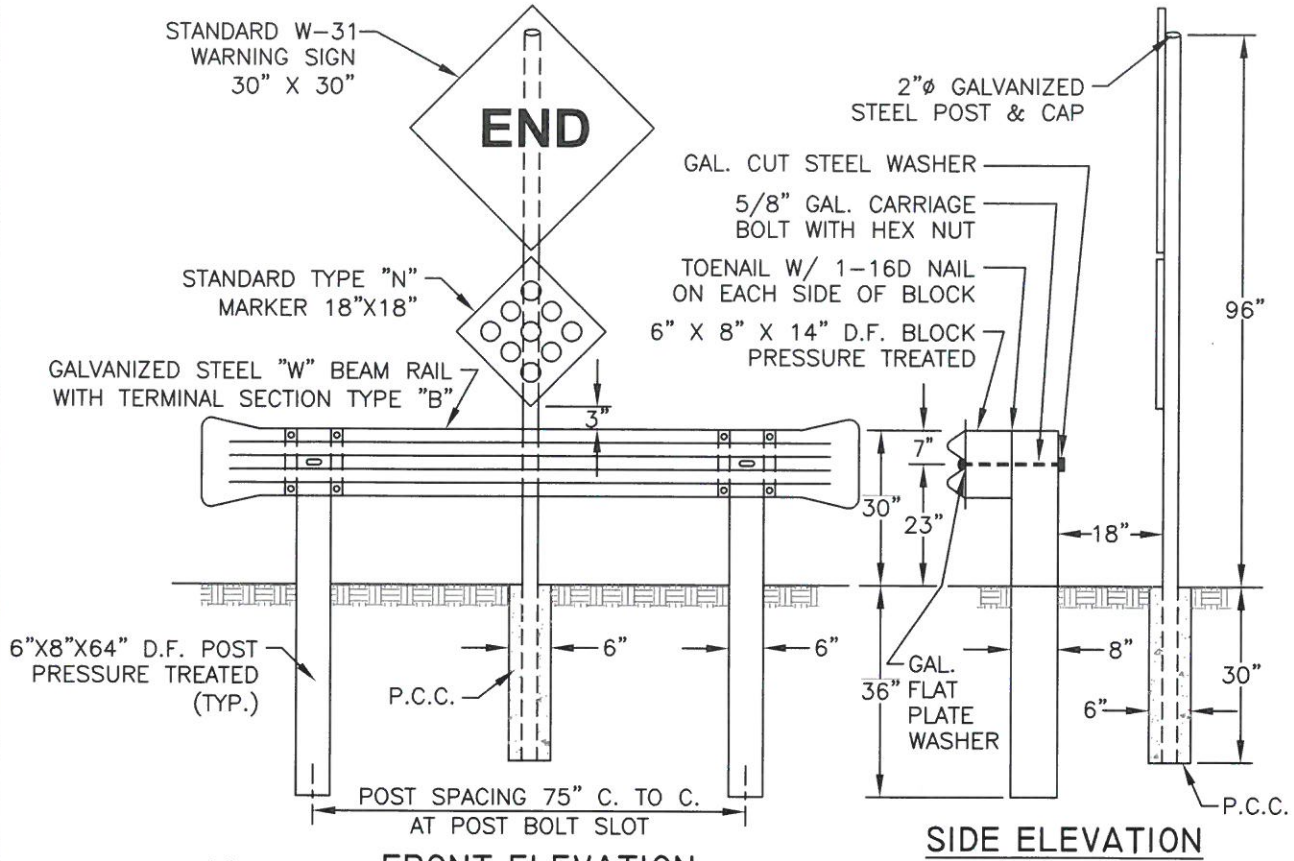
STANDARD PLAN

DRAWN BY: GL DATE: 02/2016
 CHECKED BY: BO SCALE: NONE
 APPROVED: [Signature]
 PUBLIC WORKS DIRECTOR-ENGINEERING

**CITY MONUMENTS
 CONSTRUCTION & LOCATION**

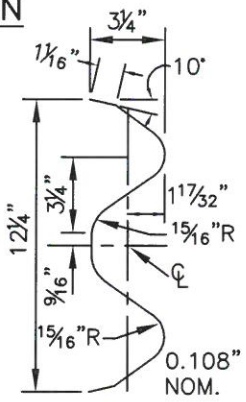
NO. **S-20**

SHEET 1 OF 1

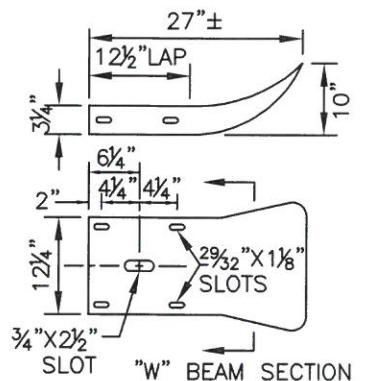


5/8"x1 1/4" BUTTON HEAD OVAL SHOULDER BOLTS WITH 1 1/4" RECESSED HEX NUTS - TOTAL 8 PER SPLICE AND 4 PER TERMINAL SECTION

RAIL SPLICE



SECTION THRU "W" BEAM RAIL ELEMENT



TERMINAL SECTION
(TYPE "B" CALTRANS STD. A-77C-1)

NOTES:

1. END SIGNS AND TYPE "N" MARKERS SHALL CONFORM TO THE PROVISIONS IN SECTION 56-2, "ROADSIDE SIGNS", OF THE STATE OF CALIFORNIA DEPARTMENT OF TRANSPORTATION STANDARD SPECIFICATIONS, JULY 2002. SIGNS AND MARKERS SHALL BE ALUMINUM PANELS NOT LESS THAN 0.080 INCH THICK. SIGN FACING SHALL BE HIGH INTENSITY GRADE, REFLECTIVE SHEETING CONFORMING TO THE STATE OF CALIFORNIA SPECIFICATIONS FOR REFLECTIVE SHEETING ALUMINUM SIGNS, JUNE 1985.
2. SIGNS AND MARKERS SHALL BE MOUNTED TO THE STEEL POSTS USING A HAWKINS - HAWKINS M2G-S2S "SIGN SADDLE" OR APPROVED EQUAL.
3. METAL BEAM GUARD RAILING SHALL CONFORM TO THE PROVISIONS IN SECTION 83-1, "RAILINGS", OF THE STATE OF CALIFORNIA DEPARTMENT OF TRANSPORTATION STANDARD SPECIFICATIONS, JULY 2002.

REVISION	BY	DATE	APP. BY COUNCIL

CITY OF CHICO

STANDARD PLAN

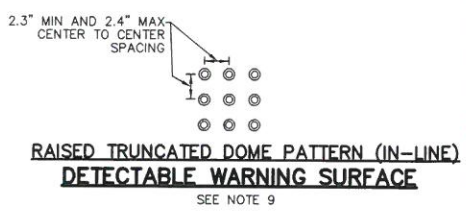
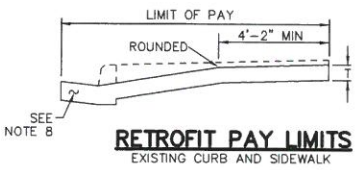
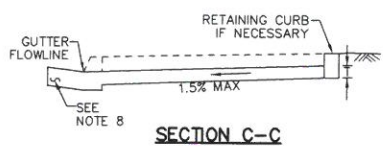
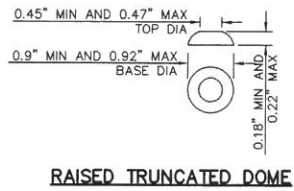
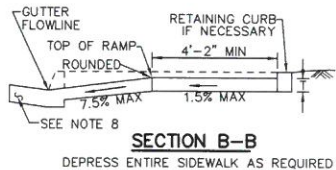
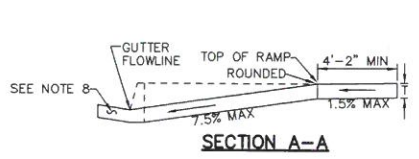
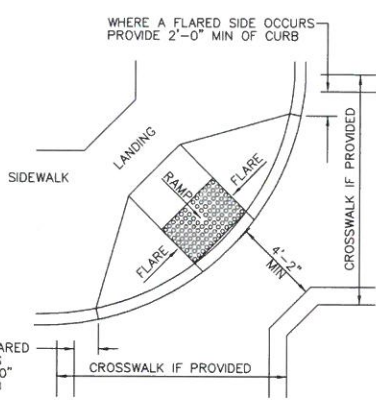
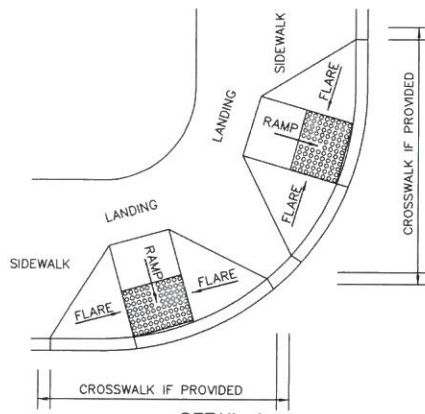
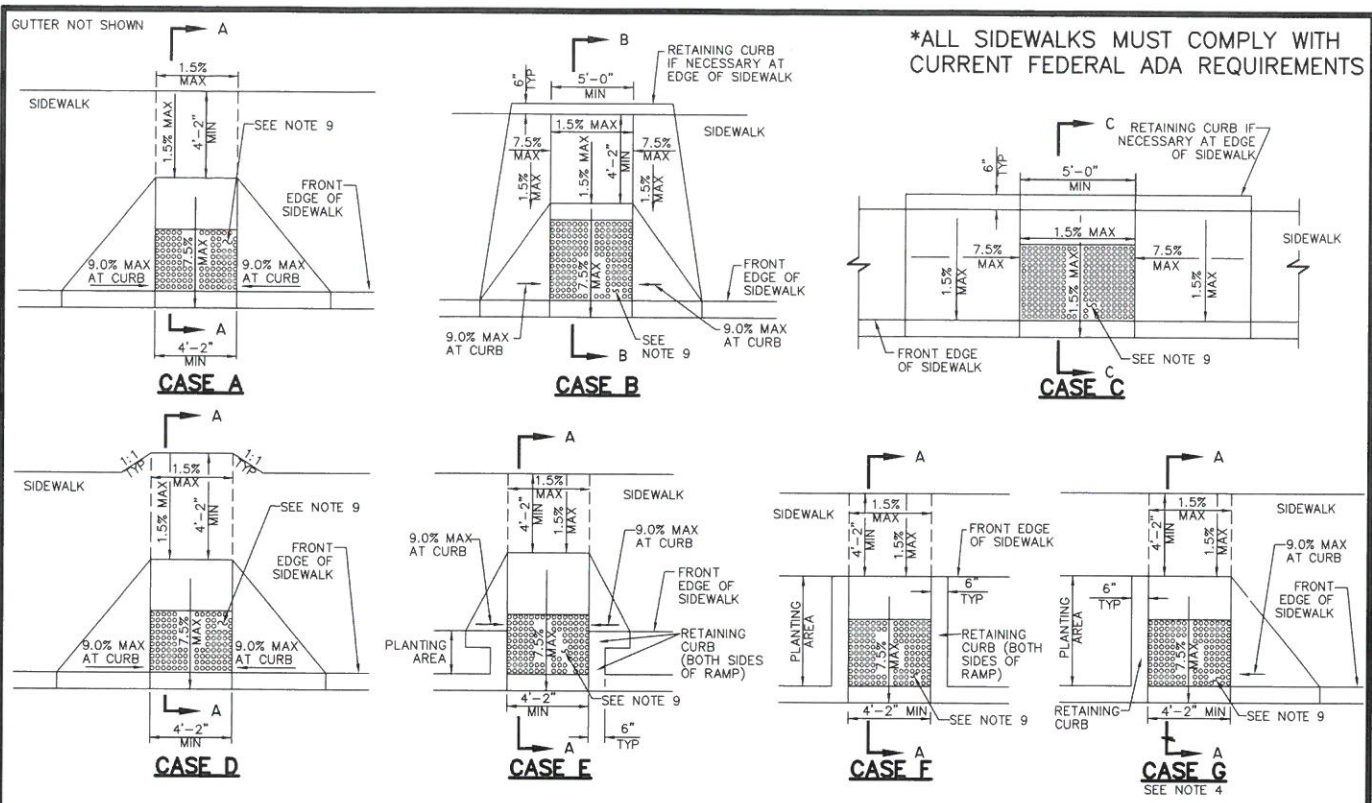
DRAWN BY: GL DATE: 02/2016
 CHECKED BY: BO SCALE: NONE
 APPROVED: [Signature]
 PUBLIC WORKS DIRECTOR-ENGINEERING

STREET BARRICADES

NO. **S-21**

SHEET 1 OF 1

***ALL SIDEWALKS MUST COMPLY WITH CURRENT FEDERAL ADA REQUIREMENTS**



REVISION	BY	DATE	APP. BY COUNCIL

CITY OF CHICO STANDARD PLAN

DRAWN BY: GL DATE: 02/2016
 CHECKED BY: BO SCALE: NONE
 APPROVED: [Signature]
 PUBLIC WORKS DIRECTOR-ENGINEERING

P.C.C. HANDICAPPED RAMP

NO. **S-27**
 SHEET 1 OF 2

NOTES:

1. AS SITE CONDITIONS DICTATE, CASE A THROUGH CASE G CURB RAMPS MAY BE USED FOR CORNER INSTALLATIONS SIMILAR TO THOSE SHOWN IN DETAIL A AND DETAIL B. THE CASE OF CURB RAMPS USED IN DETAIL A DO NOT HAVE TO BE THE SAME. CASE A THROUGH CASE G CURB RAMPS ALSO MAY BE USED AT MID BLOCK LOCATIONS, AS SITE CONDITIONS DICTATE.
2. IF DISTANCE FROM CURB TO BACK OF SIDEWALK IS TOO SHORT TO ACCOMODATE RAMP AND 4'-2" PLATFORM (LANDING) AS SHOWN IN CASE A, THE SIDEWALK MAY BE DEPRESSED LONGITUDINALLY AS IN CASE B, OR C OR MAY BE WIDENED AS IN CASE D.
3. WHEN RAMP IS LOCATED IN CENTER OF CURB RETURN, CROSSWALK CONFIGURATION MUST BE SIMILAR TO THAT SHOWN FOR DETAIL B.
4. AS SITE CONDITIONS DICTATE, THE RETAINING CURB SIDE AND THE FLARED SIDE OF THE CASE G RAMP SHALL BE CONSTRUCTED IN REVERSED POSITION.
5. IF LOCATED ON A CURVE, THE SIDES OF THE RAMP NEED NOT BE PARALLEL, BUT THE MINIMUM WIDTH OF THE RAMP SHALL BE 4'-2".
6. SIDE SLOPE OF RAMP FLARES VARY UNIFORMLY FROM A MAXIMUM OF 9.0% AT CURB TO CONFORM WITH LONGITUDINAL SIDEWALK SLOPE ADJACENT TO TOP OF THE RAMP, EXCEPT IN CASE C AND CASE F.
7. TRANSITIONS FROM RAMPS AND LANDING TO WALKS, GUTTERS OR STREETS SHALL BE FLUSH (NO LIP) AND FREE OF ABRUPT CHANGES.
8. COUNTER SLOPES OF ADJOINING GUTTERS AND ROAD SURFACES IMMEDIATELY ADJACENT TO AND WITHIN 24" OF THE CURB RAMP SHALL NOT BE STEEPER THAN 1:20 (5.0%). GUTTER PAN SLOPE SHALL NOT EXCEED 1" OF DEPTH FOR EACH 2'-0" OF WIDTH.
9. CURB RAMPS SHALL HAVE A DETECTABLE WARNING SURFACE THAT EXTENDS THE FULL WIDTH AND 3'-0" DEPTH OF THE RAMP. A 4'-0" WIDE DETECTABLE WARNING SURFACE MAY BE USED ON A 4'-2" WIDE CURB RAMP. DETECTABLE WARNING SURFACES SHALL CONFORM TO THE REQUIREMENTS IN THE STANDARD SPECIFICATIONS.
10. SIDEWALK AND RAMP THICKNESS, "T", SHALL BE 3" MINIMUM.
11. UTILITY PULL BOXES, MANHOLES, VAULTS, AND ALL OTHER UTILITY FACILITIES WITHIN THE BOUNDARIES OF THE CURB RAMP WILL BE RELOCATED OR ADJUSTED TO GRADE BY THE OWNER PRIOR TO, OR IN CONJUNCTION WITH, CURB RAMP CONSTRUCTION.
12. DETECTABLE WARNING SURFACE MAY HAVE TO BE CUT TO ALLOW REMOVAL OF UTILITY COVERS WHILE MAINTAINING FULL DETECTABLE WARNING WIDTH AND DEPTH.

REVISION	BY	DATE	APP. BY COUNCIL

CITY OF CHICO

STANDARD PLAN

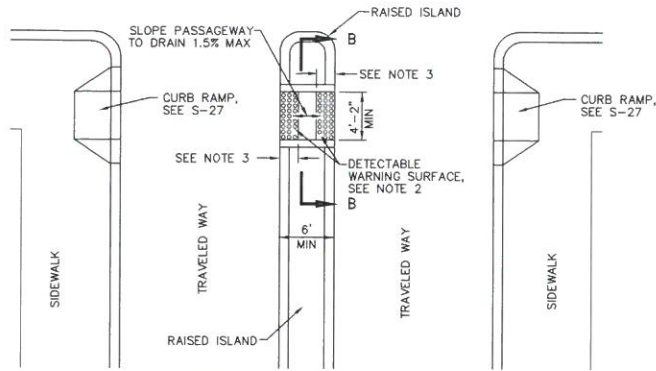
DRAWN BY: MJD DATE: 02/2016
 CHECKED BY: BO SCALE: NONE
 APPROVED: *[Signature]*
 PUBLIC WORKS DIRECTOR-ENGINEERING

P.C.C. HANDICAPPED RAMP

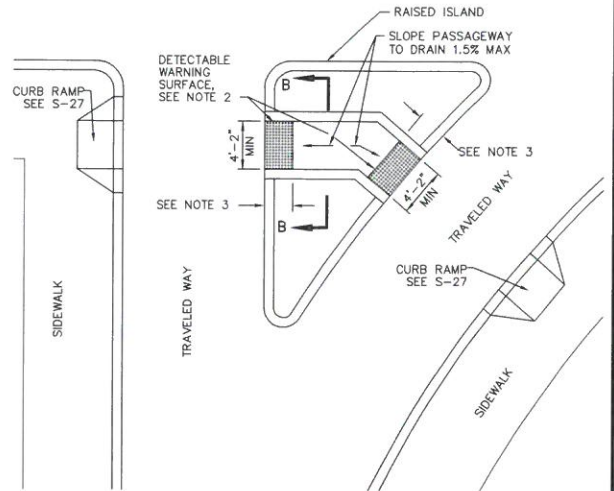
NO.
S-27

SHEET 2 OF 2

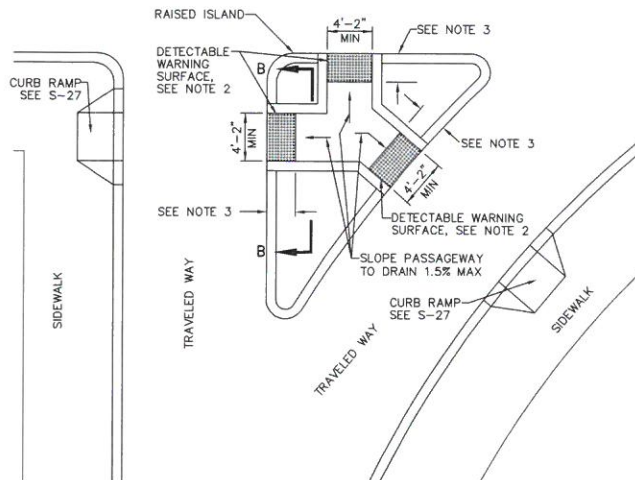
***ALL SIDEWALKS MUST COMPLY WITH CURRENT FEDERAL ADA REQUIREMENTS**



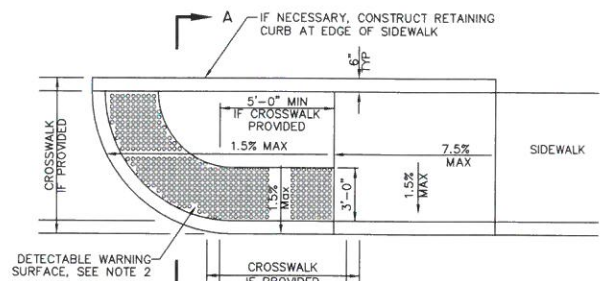
TYPE A PASSAGEWAY



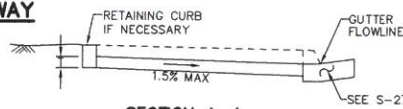
TYPE B PASSAGEWAY



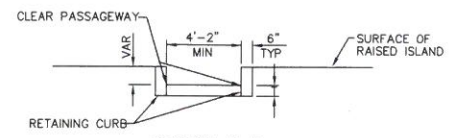
TYPE C PASSAGEWAY



CASE CM CURB RAMP



SECTION A-A



SECTION B-B

NOTES:

1. SIDEWALK RAMP AND PASSAGEWAY THICKNESS, "T", SHALL BE 3-1/2" MINIMUM.
2. FOR DETAILS OF DETECTABLE WARNING SURFACES, SEE REVISED CALTRANS STANDARD PLAN RSP A88A.
3. WHERE AN ISLAND PASSAGEWAY LENGTH IS GREATER THAN OR EQUAL TO 6'-0", BUT LESS THAN 8'-0", EACH DETECTABLE WARNING SURFACE SHALL EXTEND THE FULL WIDTH AND 2'-0" DEPTH OF THE PASSAGEWAY LENGTH. WHERE AN ISLAND PASSAGEWAY LENGTH IS GREATER THAN OR EQUAL TO 8'-0", EACH DETECTABLE WARNING SURFACE SHALL EXTEND THE FULL WIDTH AND 3'-0" DEPTH OF THE PASSAGEWAY LENGTH. A 4'-0" WIDE DETECTABLE WARNING SURFACE MAY BE USED ON A 4'-2" WIDE ISLAND PASSAGEWAY.
4. TRANSITIONS FROM RAMPS TO WALKS, GUTTERS, OR STREETS SHALL BE FLUSH (NO LIP) AND FREE OF ABRUPT CHANGES.
5. UTILITY PULL BOXES, MANHOLES, VAULTS AND ALL OTHER UTILITY FACILITIES WITHIN THE BOUNDARY OF THE CURB RAMP WILL BE RELOCATED OR ADJUSTED TO GRADE BY THE OWNER PRIOR TO, OR IN CONJUNCTION WITH, CURB RAMP CONSTRUCTION.
6. DETECTABLE WARNING SURFACE MAY HAVE TO BE CUT TO ALLOW REMOVAL OF UTILITY COVERS WHILE MAINTAINING FULL DETECTABLE WARNING WIDTH AND DEPTH.

REVISION	BY	DATE	APP. BY COUNCIL

CITY OF CHICO

STANDARD PLAN

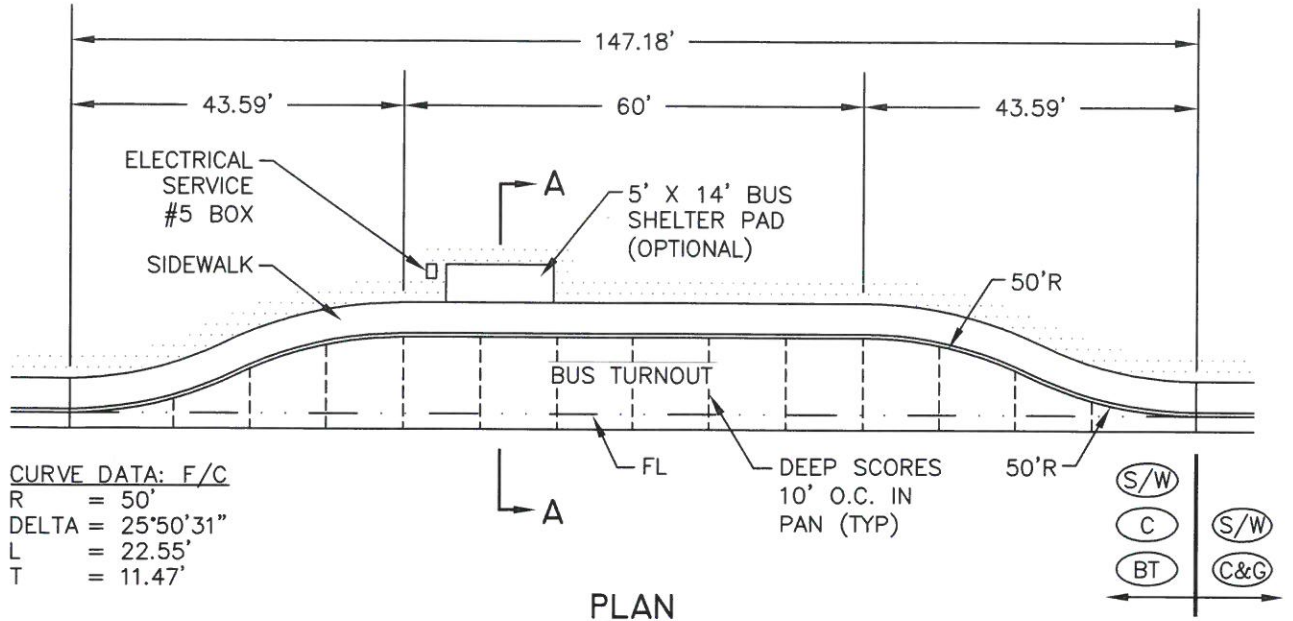
DRAWN BY: GL DATE: 02/2016
 CHECKED BY: BO SCALE: NONE
 APPROVED: Bruce Otter
 PUBLIC WORKS DIRECTOR-ENGINEERING

P.C.C. HANDICAPPED RAMP

NO. **S-27A**

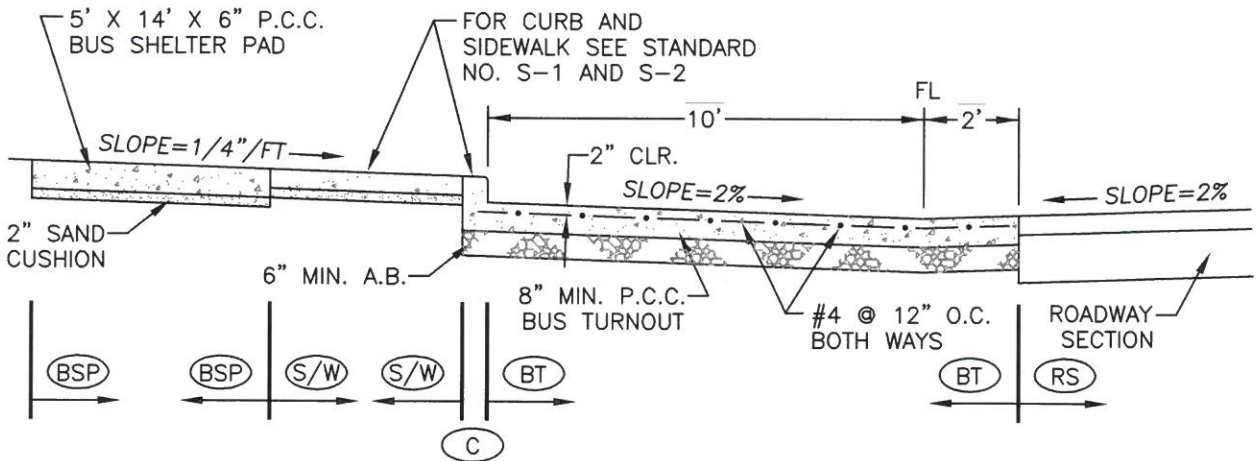
SHEET 1 OF 1

*ALL SIDEWALKS MUST COMPLY WITH CURRENT FEDERAL ADA REQUIREMENTS



CURVE DATA: F/C
 R = 50'
 DELTA = 25°50'31"
 L = 22.55'
 T = 11.47'

PLAN



SECTION A-A

NOTES:

1. FOR EACH ADDITIONAL PASS THROUGH BUS SPACE ADD 50' AND FOR EACH ADDITIONAL LAYOVER BUS SPACE ADD 80'.
2. CONCRETE SHALL BE CLASS A, REBAR STEEL SHALL BE 60 GRADE.
3. STANDARD BUS SHELTER: TOLAR MODEL #13NALD-GL

(BT) = QUANTITY PAYMENT LIMITS FOR CITY CONTRACTS

REVISION	BY	DATE	APP. BY COUNCIL

CITY OF CHICO

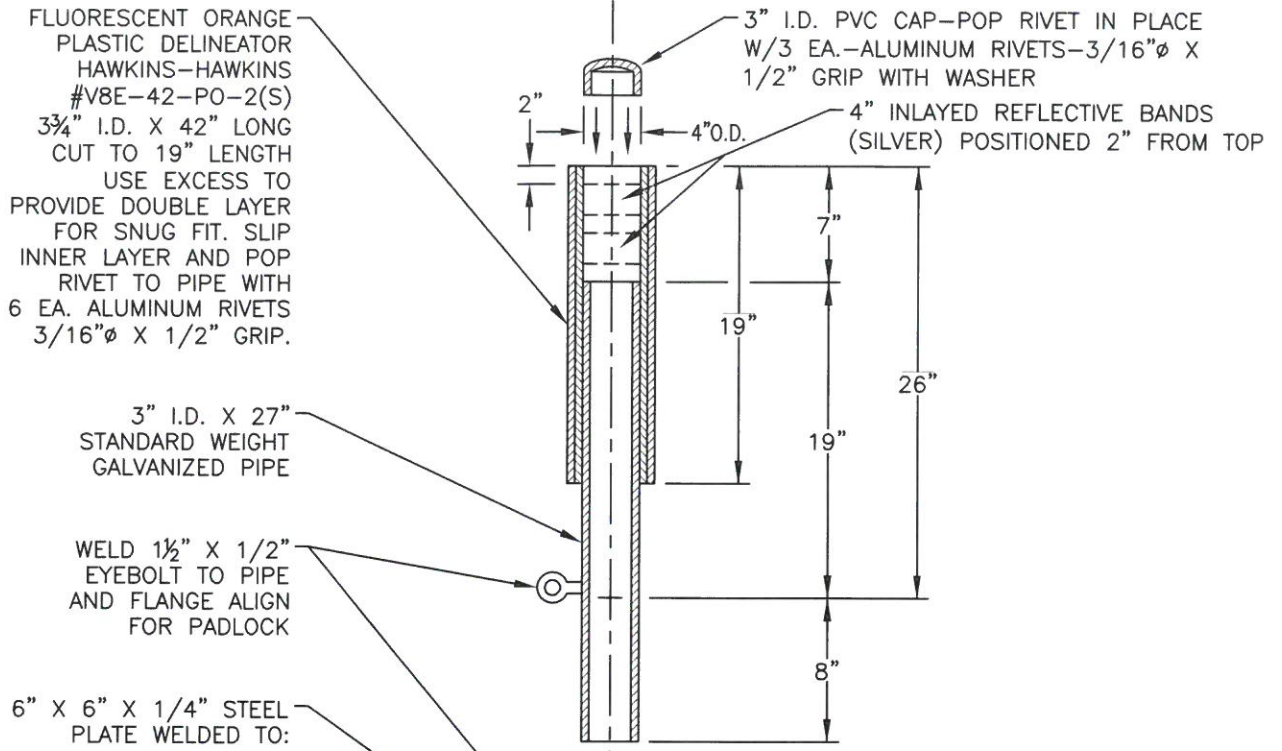
STANDARD PLAN

DRAWN BY: GL DATE: 02/2016
 CHECKED BY: BO SCALE: NONE
 APPROVED: *Bob Otter*
 PUBLIC WORKS DIRECTOR-ENGINEERING

BUS TURNOUT

NO. S-28

SHEET 1 OF 1



FLUORESCENT ORANGE
 PLASTIC DELINEATOR
 HAWKINS-HAWKINS
 #V8E-42-PO-2(S)
 3 3/4" I.D. X 42" LONG
 CUT TO 19" LENGTH
 USE EXCESS TO
 PROVIDE DOUBLE LAYER
 FOR SNUG FIT. SLIP
 INNER LAYER AND POP
 RIVET TO PIPE WITH
 6 EA. ALUMINUM RIVETS
 3/16" Ø X 1/2" GRIP.

3" I.D. X 27"
 STANDARD WEIGHT
 GALVANIZED PIPE

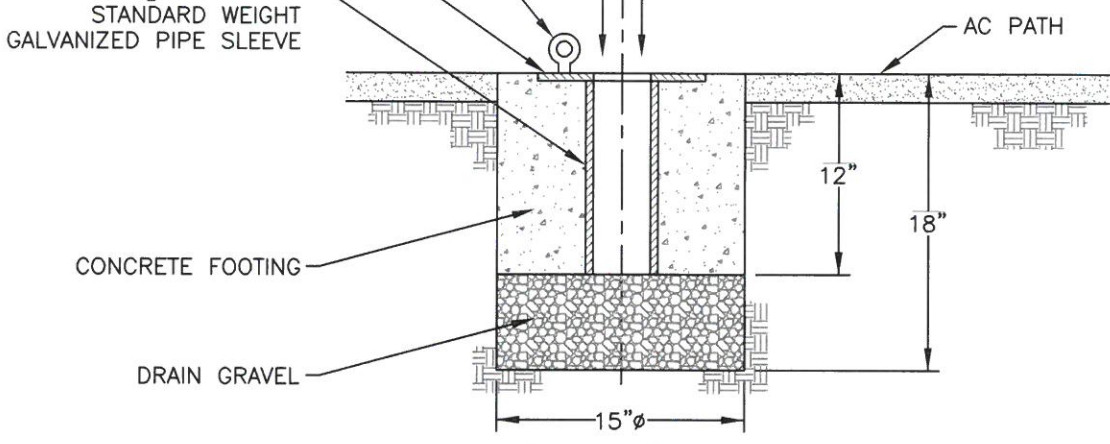
WELD 1 1/2" X 1/2"
 EYEBOLT TO PIPE
 AND FLANGE ALIGN
 FOR PADLOCK

6" X 6" X 1/4" STEEL
 PLATE WELDED TO:

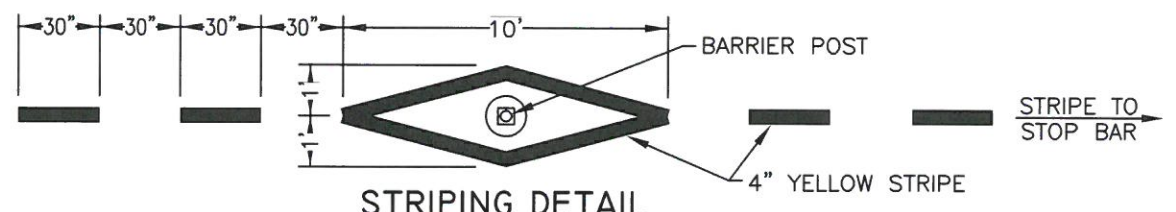
3 1/2" I.D. X 12"
 STANDARD WEIGHT
 GALVANIZED PIPE SLEEVE

3" I.D. PVC CAP-POP RIVET IN PLACE
 W/3 EA.-ALUMINUM RIVETS-3/16" Ø X
 1/2" GRIP WITH WASHER

4" INLAYED REFLECTIVE BANDS
 (SILVER) POSITIONED 2" FROM TOP



BARRIER POST



STRIPING DETAIL

NOTE:
 ALL FERROUS METALS SHALL BE GALVANIZED-FIELD WELDS WILL BE PERMITTED
 WELDS MUST BE PAINTED IN ACCORDANCE WITH STATE STANDARD SPECIFICATION: SECTION 59-3

REVISION	BY	DATE	APP. BY

CITY OF CHICO		STANDARD PLAN	
DRAWN BY: <u>GL</u> DATE: <u>02/2016</u> CHECKED BY: <u>BO</u> SCALE: <u>NONE</u> APPROVED: <i>Paul Otter</i> PUBLIC WORKS DIRECTOR-ENGINEERING	BICYCLE BARRIER POST		NO. S-35 SHEET 1 OF 1