

ORDINANCE NUMBER 2 - 2024

COUNTY OF FRANKLIN, KENTUCKY

**AN ORDINANCE AMENDING ORDINANCE NUMBER 8-2023  
RELATING TO THE REAPPORTIONMENT OF  
MAGISTERIAL DISTRICTS**

**WHEREAS**, on June 22, 2023, the Franklin County Fiscal Court received the reapportionment map of the Commissioners; and

**WHEREAS**, on July 31, 2023, the Franklin County Fiscal Court gave second reading and approval of Ordinance Number 8-2023 series to reapportion the six (6) magisterial districts in Franklin County, Kentucky; and

**WHEREAS**, changes to the 56<sup>th</sup> House District at the intersection of Schenkel and Steadmantown Lanes requires realignment of the boundary to avoid the creation of a new voting precinct; and

**WHEREAS**, it is also recommended by the Franklin County Clerk that the property identified as Capital View Park be removed from the sixth (6<sup>th</sup>) magisterial district and added to the second (2<sup>nd</sup>) magisterial district; and

**WHEREAS**, it is also recommended by the Franklin County Clerk that the property identified as the Maples Subdivision and 1700 Steadmantown Lane be removed from the fourth (4<sup>th</sup>) magisterial district and added to the third (3<sup>rd</sup>) magisterial district; and

**NOW, THEREFORE, BE IT ORDAINED BY THE FISCAL COURT OF THE COUNTY OF FRANKLIN, COMMONWEALTH OF KENTUCKY, that the following six (6) magisterial districts are amended and reapportioned as follows:**

SECTION I.

**1<sup>st</sup> District**  
**Population total 8,723**

**2<sup>nd</sup> District**  
**Population total 8,461**

**3<sup>rd</sup> District**  
**Population total 8,439**  
**8,775**

**4<sup>th</sup> District**  
**Population total 8,585**  
**8,250**

**5<sup>th</sup> District**  
**Population total 8,522**  
**8,523**

**6<sup>th</sup> District**  
**Population total 8,809**


SECTION II. CODIFICATION. The provisions of Section I of this Ordinance shall be published as appropriate in the Franklin County Code of Ordinances as soon as practicable.

SECTION III. SEVERABILITY CLAUSE. If any section, part of provision of this Ordinance is declared unconstitutional or invalid by a court of competent jurisdiction, then it is expressly provided and it is the intention of the Franklin County Fiscal Court in passing this Ordinance that its parts shall be severable and all other parts of this Ordinance shall not be affected thereby and they shall remain in full force and effect.


SECTION IV. PUBLICATION AND EFFECTIVE DATE. This Ordinance shall take effect immediately upon its passage and publication according to law.

**INTRODUCED AND GIVEN FIRST READING IN SUMMARY** at a duly convened meeting of the Fiscal Court of Franklin County, Kentucky, held on the 9<sup>th</sup> day of January, 2024.

**GIVEN SECOND READING AND APPROVED** at a duly convened meeting of the Fiscal Court of Franklin County, Kentucky, held on the 24 day of January, 2024 and of record in Fiscal Court Order Book 34, Page 333

  
\_\_\_\_\_  
Michael Mueller  
Franklin County Judge/Executive

ATTESTED TO:

  
\_\_\_\_\_  
Kim Cox  
Fiscal Court Clerk

#### SUMMARY

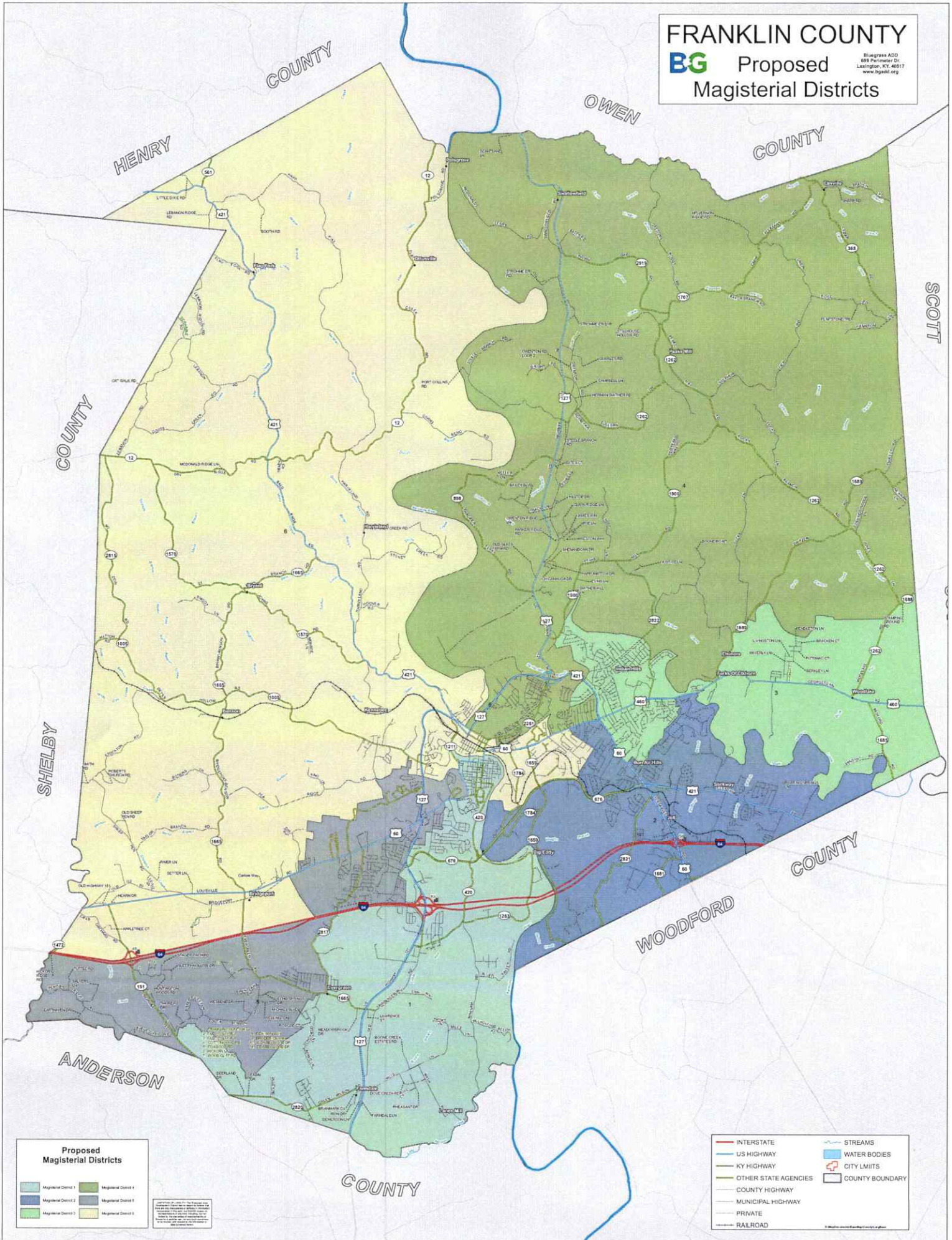
This ordinance approves and amendment to the reapportionment of the six (6) magisterial districts based on population.



# FRANKLIN COUNTY

**BG** Proposed  
Magisterial Districts

Bluegrass ADD  
608 Perimeter Dr.  
Lexington, KY 40517  
www.bgadd.org



**Proposed Magisterial Districts**

Light Green	Magisterial District 1	Dark Green	Magisterial District 4
Blue	Magisterial District 2	Light Green	Magisterial District 5
Grey	Magisterial District 3	Yellow	Magisterial District 6

Bluegrass ADD is a 501(c)(3) non-profit organization. The information on this map is for informational purposes only. It is not intended to be used for legal or financial purposes. The information on this map is subject to change without notice. © 2017 Bluegrass ADD

Red line	INTERSTATE	Blue wavy line	STREAMS
Blue line	US HIGHWAY	Light blue area	WATER BODIES
Green line	KY HIGHWAY	Red outline	CITY LIMITS
Yellow line	OTHER STATE AGENCIES	Black outline	COUNTY BOUNDARY
Grey line	COUNTY HIGHWAY		
Light blue line	MUNICIPAL HIGHWAY		
Thin grey line	PRIVATE		
Black line	RAILROAD		